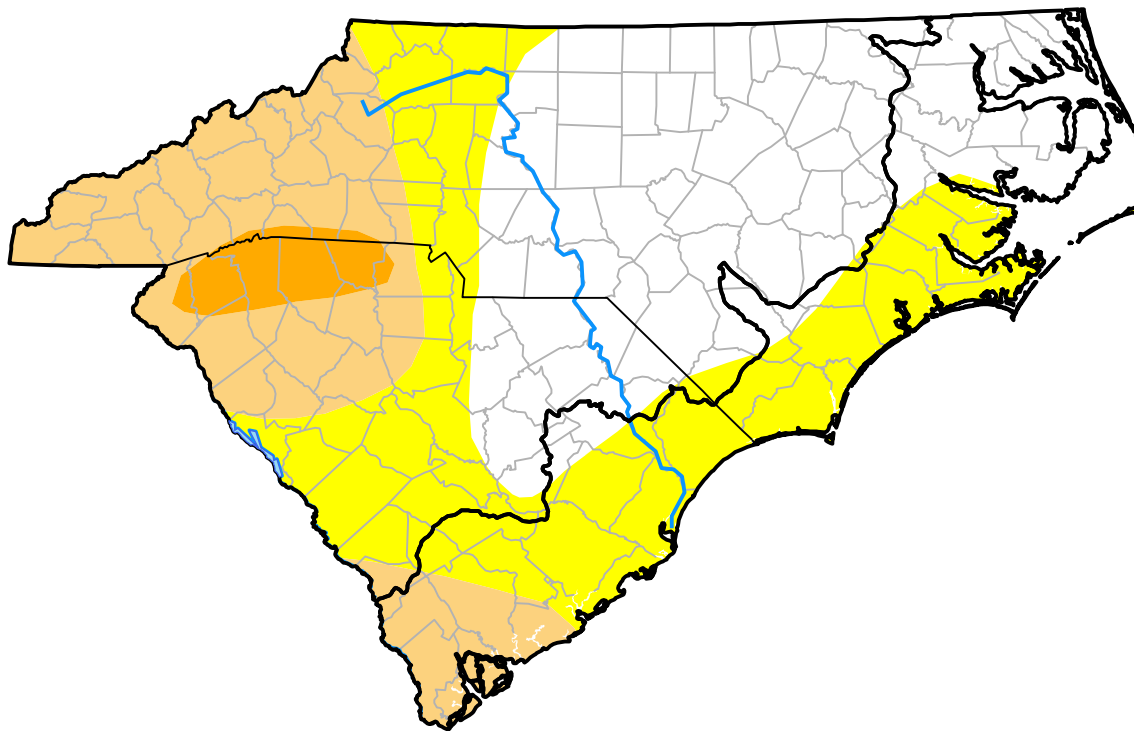


U.S. Drought Monitor

Coastal Carolinas RDEWS

March 31, 2009
 (Released Thursday, Apr. 2, 2009)
 Valid 8 a.m. EDT



Drought Conditions (Percent Area)

	None	D0	D1	D2	D3	D4
Current	29.09	55.68	15.23	0.00	0.00	0.00
Last Week <i>03-26-2009</i>	0.66	86.12	13.23	0.00	0.00	0.00
3 Months Ago <i>01-01-2009</i>	100.00	0.00	0.00	0.00	0.00	0.00
Start of Calendar Year <i>01-01-2009</i>	100.00	0.00	0.00	0.00	0.00	0.00
Start of Water Year <i>10-02-2008</i>	37.75	26.82	28.48	6.95	0.00	0.00
One Year Ago <i>04-03-2008</i>	6.25	61.41	25.97	6.37	0.00	0.00

Intensity:



The Drought Monitor focuses on broad-scale conditions. Local conditions may vary. For more information on the Drought Monitor, go to <https://droughtmonitor.unl.edu/About.aspx>

Author:

Mark Svoboda
 National Drought Mitigation Center



droughtmonitor.unl.edu