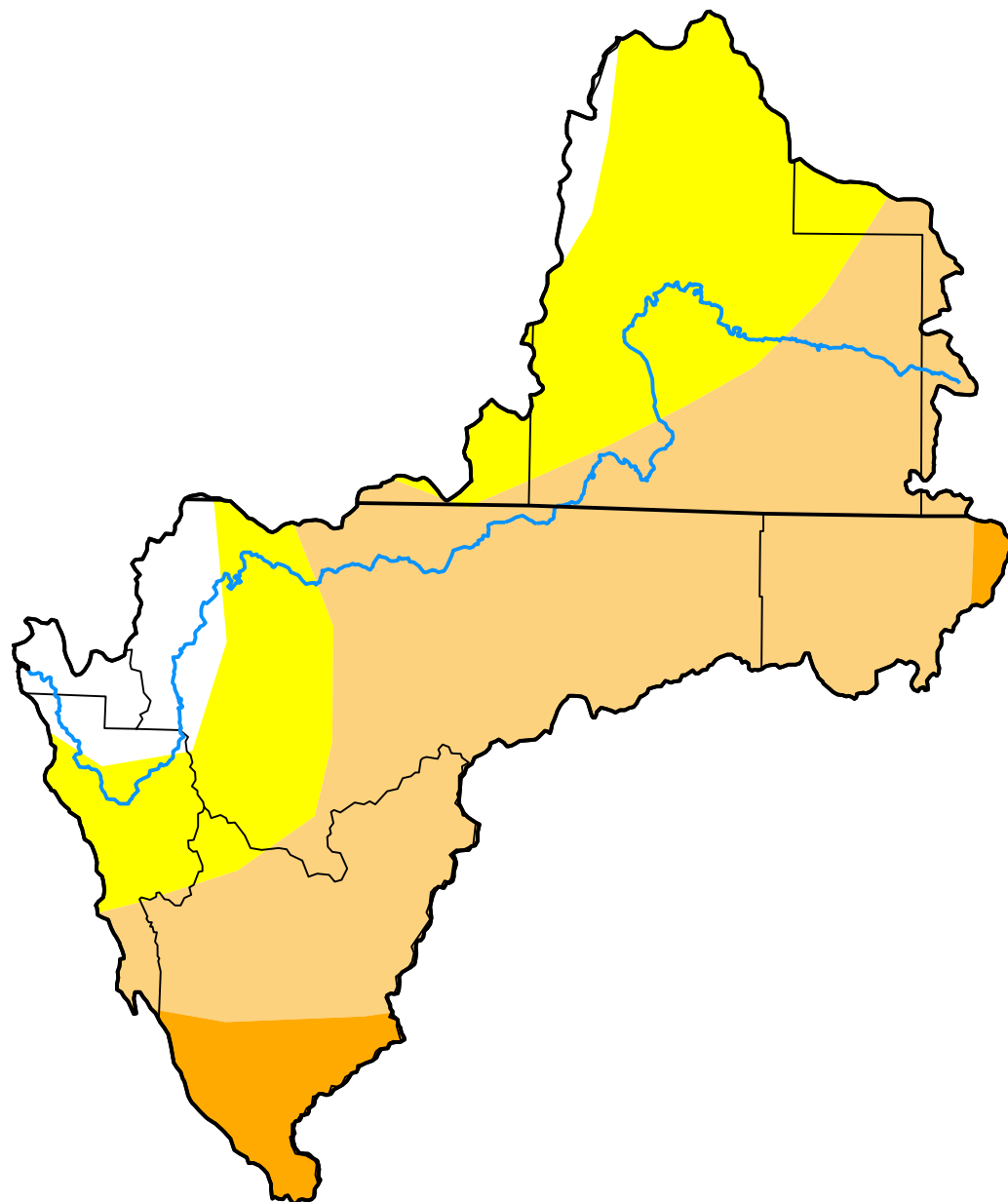


U.S. Drought Monitor Klamath River Basin

June 9, 2009
(Released Thursday, Jun. 11, 2009)
Valid 8 a.m. EDT



Drought Conditions (Percent Area)

	None	D0-D4	D1-D4	D2-D4	D3-D4	D4
Current	7.69	92.31	60.13	5.48	0.00	0.00
Last Week <i>06-02-2009</i>	7.69	92.31	60.13	5.48	0.00	0.00
3 Months Ago <i>03-10-2009</i>	7.64	92.36	58.44	3.16	0.00	0.00
Start of Calendar Year <i>12-30-2008</i>	8.39	91.61	63.03	7.41	0.00	0.00
Start of Water Year <i>09-30-2008</i>	0.00	100.00	55.48	23.69	0.00	0.00
One Year Ago <i>06-10-2008</i>	67.42	32.58	5.30	0.42	0.00	0.00

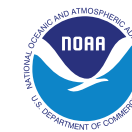
Intensity:

None	D2 Severe Drought
D0 Abnormally Dry	D3 Extreme Drought
D1 Moderate Drought	D4 Exceptional Drought

The Drought Monitor focuses on broad-scale conditions. Local conditions may vary. For more information on the Drought Monitor, go to <https://droughtmonitor.unl.edu/About.aspx>

Author:

Brian Fuchs
National Drought Mitigation Center



droughtmonitor.unl.edu