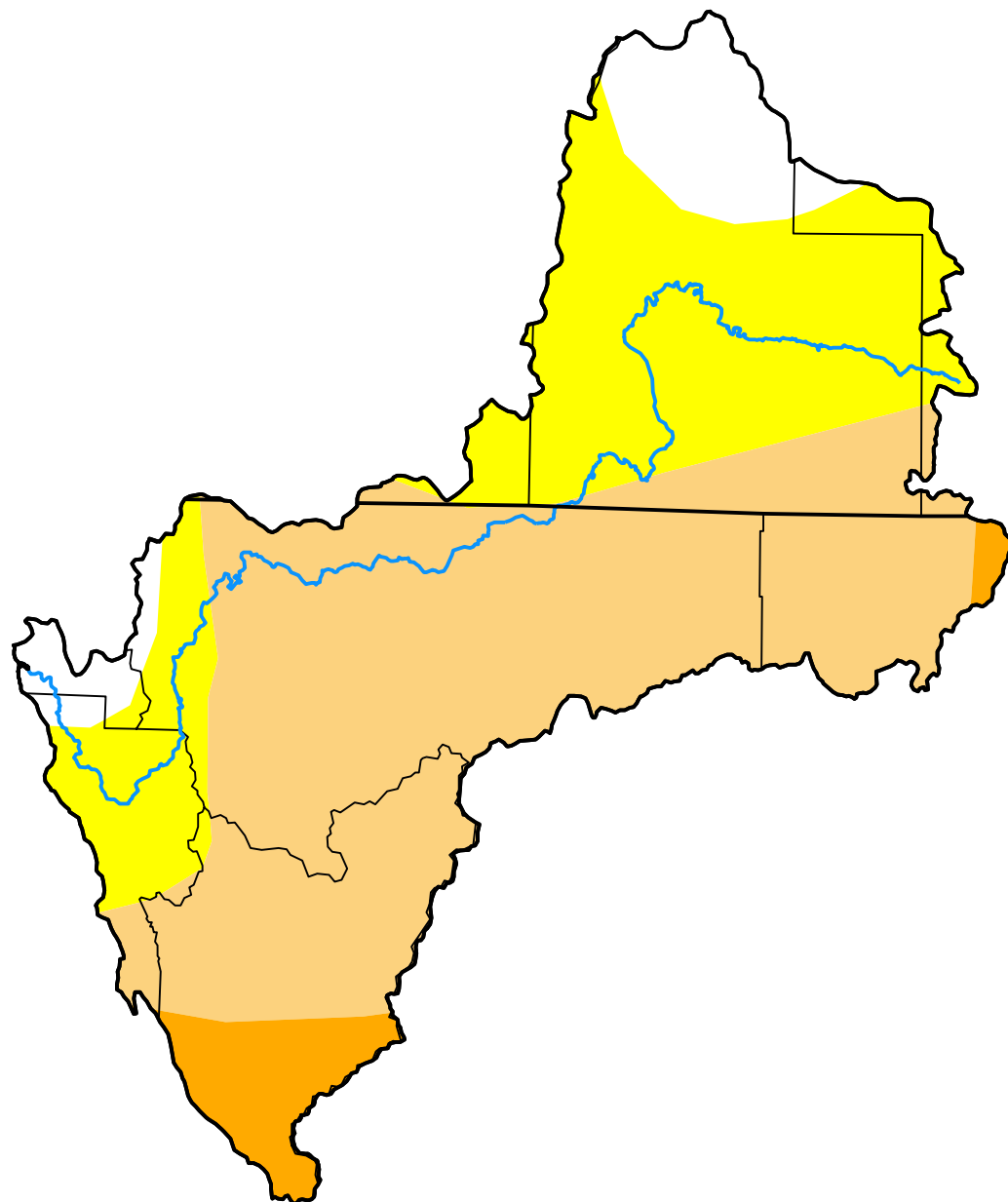


U.S. Drought Monitor Klamath River Basin

July 14, 2009
(Released Thursday, Jul. 16, 2009)
Valid 8 a.m. EDT



Drought Conditions (Percent Area)

| | None | D0-D4 | D1-D4 | D2-D4 | D3-D4 | D4 |
|---|-------|--------|-------|-------|-------|------|
| Current | 8.71 | 91.29 | 59.13 | 5.47 | 0.00 | 0.00 |
| Last Week 07-07-2009 | 8.71 | 91.29 | 59.13 | 5.47 | 0.00 | 0.00 |
| 3 Months Ago 04-14-2009 | 7.64 | 92.36 | 60.55 | 6.29 | 0.00 | 0.00 |
| Start of Calendar Year 12-30-2008 | 8.39 | 91.61 | 63.03 | 7.41 | 0.00 | 0.00 |
| Start of Water Year 09-30-2008 | 0.00 | 100.00 | 55.48 | 23.69 | 0.00 | 0.00 |
| One Year Ago 07-15-2008 | 25.70 | 74.30 | 10.06 | 0.42 | 0.00 | 0.00 |

Intensity:

| | |
|---------------------|------------------------|
| None | D2 Severe Drought |
| D0 Abnormally Dry | D3 Extreme Drought |
| D1 Moderate Drought | D4 Exceptional Drought |

The Drought Monitor focuses on broad-scale conditions. Local conditions may vary. For more information on the Drought Monitor, go to <https://droughtmonitor.unl.edu/About.aspx>

Author:

Eric Luebehusen
U.S. Department of Agriculture



droughtmonitor.unl.edu