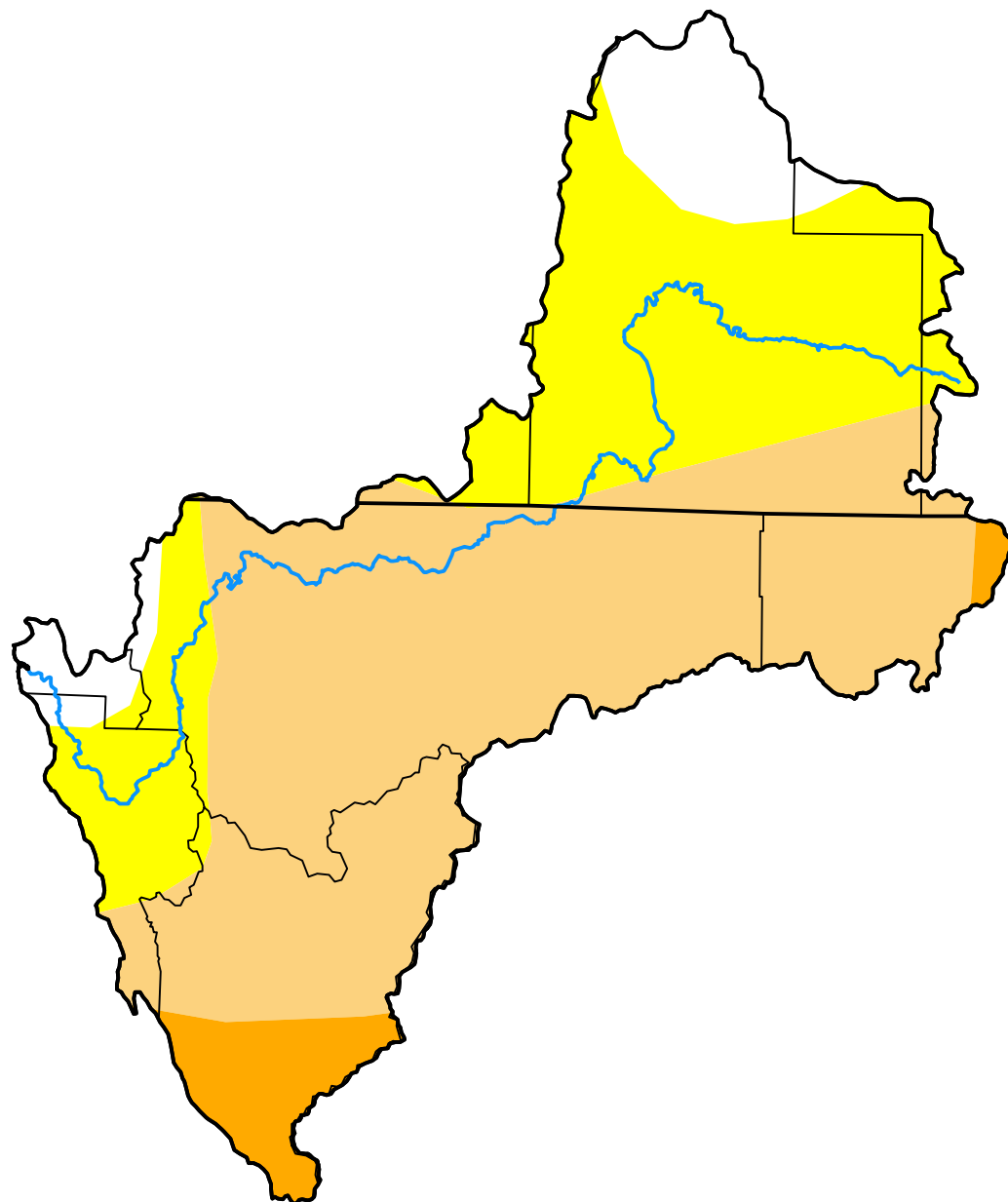


U.S. Drought Monitor Klamath River Basin

July 21, 2009
(Released Thursday, Jul. 23, 2009)
Valid 8 a.m. EDT



Drought Conditions (Percent Area)

	None	D0-D4	D1-D4	D2-D4	D3-D4	D4
Current	8.71	91.29	59.13	5.47	0.00	0.00
Last Week 07-14-2009	8.71	91.29	59.13	5.47	0.00	0.00
3 Months Ago 04-21-2009	7.64	92.36	60.55	6.29	0.00	0.00
Start of Calendar Year 12-30-2008	8.39	91.61	63.03	7.41	0.00	0.00
Start of Water Year 09-30-2008	0.00	100.00	55.48	23.69	0.00	0.00
One Year Ago 07-22-2008	25.70	74.30	10.06	0.00	0.00	0.00

Intensity:

None	D2 Severe Drought
D0 Abnormally Dry	D3 Extreme Drought
D1 Moderate Drought	D4 Exceptional Drought

The Drought Monitor focuses on broad-scale conditions. Local conditions may vary. For more information on the Drought Monitor, go to <https://droughtmonitor.unl.edu/About.aspx>

Author:

Eric Luebehusen
U.S. Department of Agriculture



droughtmonitor.unl.edu