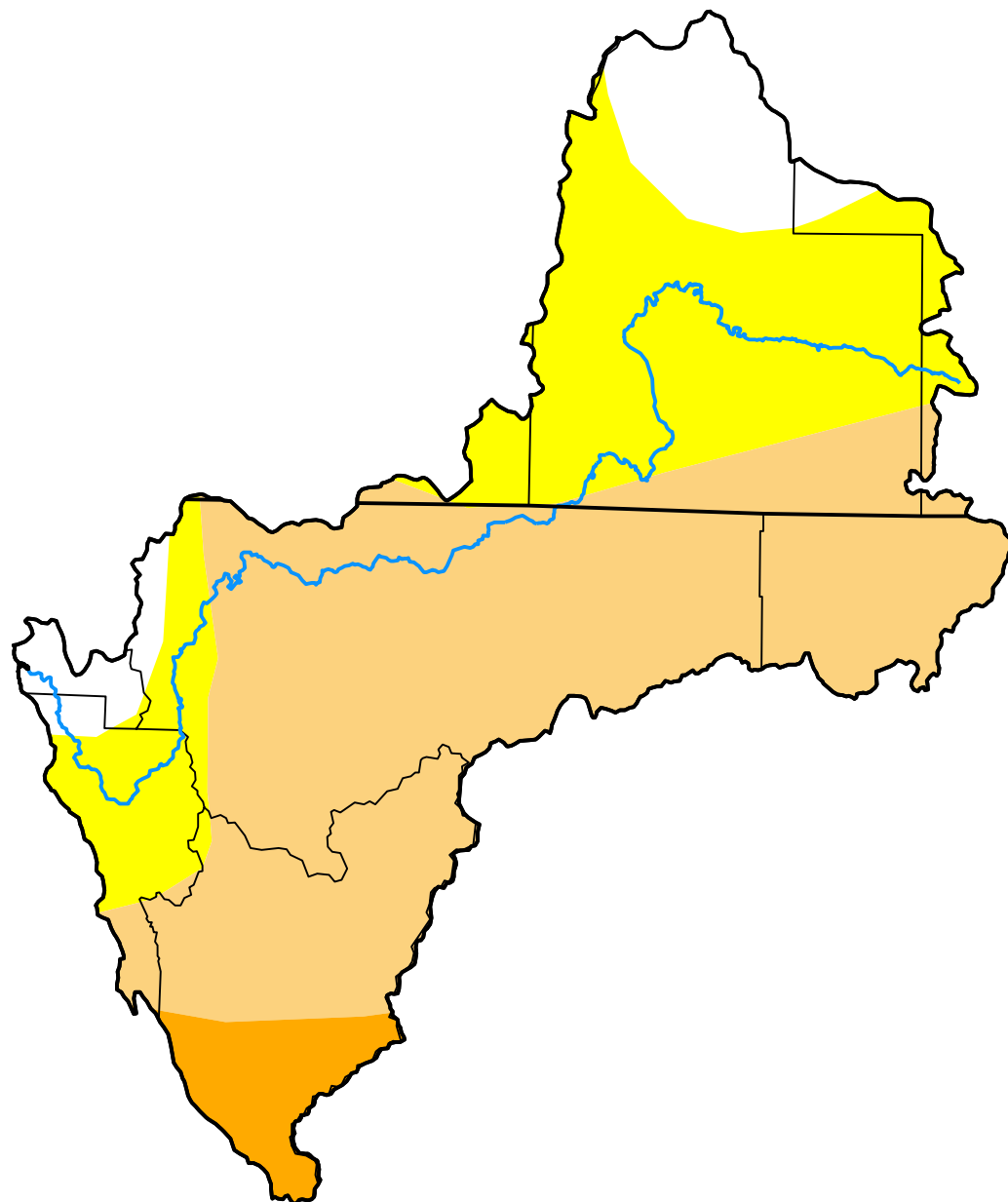


U.S. Drought Monitor Klamath River Basin

August 11, 2009
(Released Thursday, Aug. 13, 2009)
Valid 8 a.m. EDT



Drought Conditions (Percent Area)

	None	D0	D1	D2	D3	D4
Current	9.56	31.31	54.18	4.95	0.00	0.00
Last Week <i>08-04-2009</i>	9.34	31.53	53.66	5.47	0.00	0.00
3 Months Ago <i>05-12-2009</i>	7.64	31.81	55.19	5.36	0.00	0.00
Start of Calendar Year <i>12-30-2008</i>	8.39	28.58	55.63	7.41	0.00	0.00
Start of Water Year <i>09-30-2008</i>	0.00	44.52	31.78	23.69	0.00	0.00
One Year Ago <i>08-12-2008</i>	0.00	89.94	9.35	0.71	0.00	0.00

Intensity:

None	D2 Severe Drought
D0 Abnormally Dry	D3 Extreme Drought
D1 Moderate Drought	D4 Exceptional Drought

The Drought Monitor focuses on broad-scale conditions. Local conditions may vary. For more information on the Drought Monitor, go to <https://droughtmonitor.unl.edu/About.aspx>

Author:

Laura Edwards
Western Regional Climate Center



droughtmonitor.unl.edu