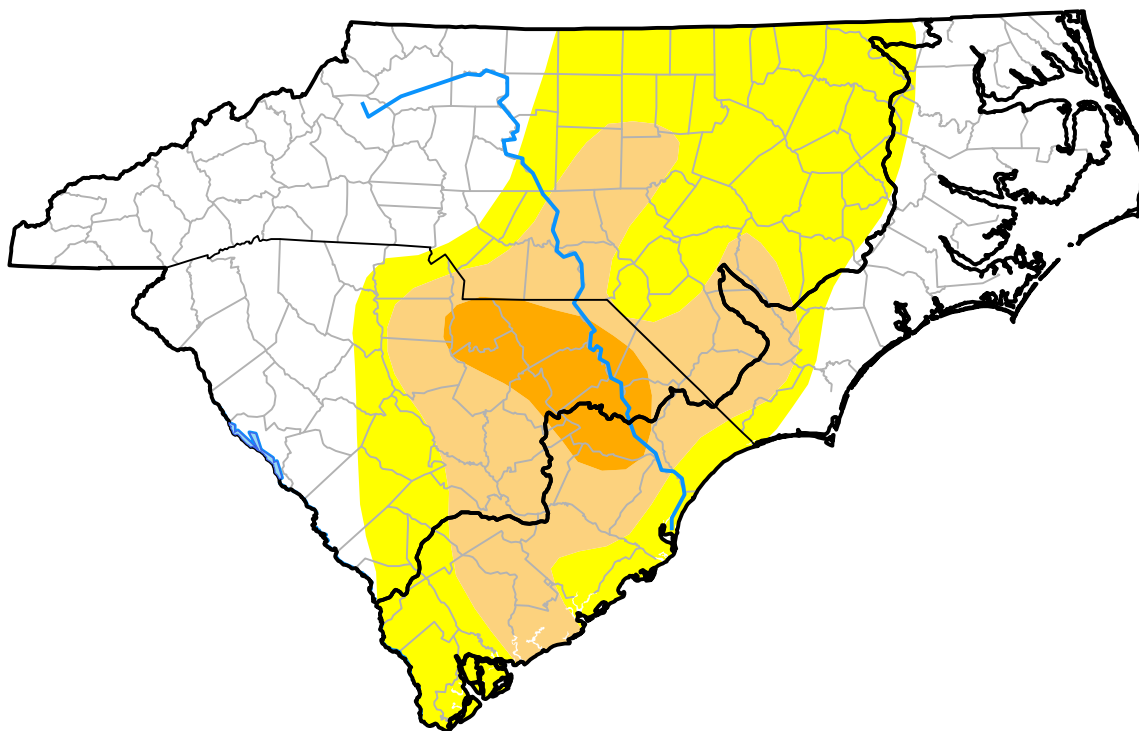


# Carolinas RDEWS and Surrounding Areas

Drought Conditions (Percent Area)

	None	D0-D4	D1-D4	D2-D4	D3-D4	D4
<b>Current</b>	41.99	58.01	26.11	5.18	0.00	0.00
<b>Last Week</b> <i>09-24-2009</i>	28.79	71.21	34.85	6.00	0.00	0.00
<b>3 Months Ago</b> <i>07-02-2009</i>	72.42	27.58	0.00	0.00	0.00	0.00
<b>Start of Calendar Year</b> <i>01-01-2009</i>	75.59	24.41	18.87	10.18	4.43	0.00
<b>Start of Water Year</b> <i>10-02-2008</i>	35.46	64.54	48.13	26.60	16.97	6.66
<b>One Year Ago</b> <i>10-02-2008</i>	35.46	64.54	48.13	26.60	16.97	6.66



**Intensity:**

- None
- D0 Abnormally Dry
- D1 Moderate Drought
- D2 Severe Drought
- D3 Extreme Drought
- D4 Exceptional Drought

The Drought Monitor focuses on broad-scale conditions. Local conditions may vary. For more information on the Drought Monitor, go to <https://droughtmonitor.unl.edu/About.aspx>

**Author:**

David Miskus  
NOAA/NWS/NCEP/CPC

