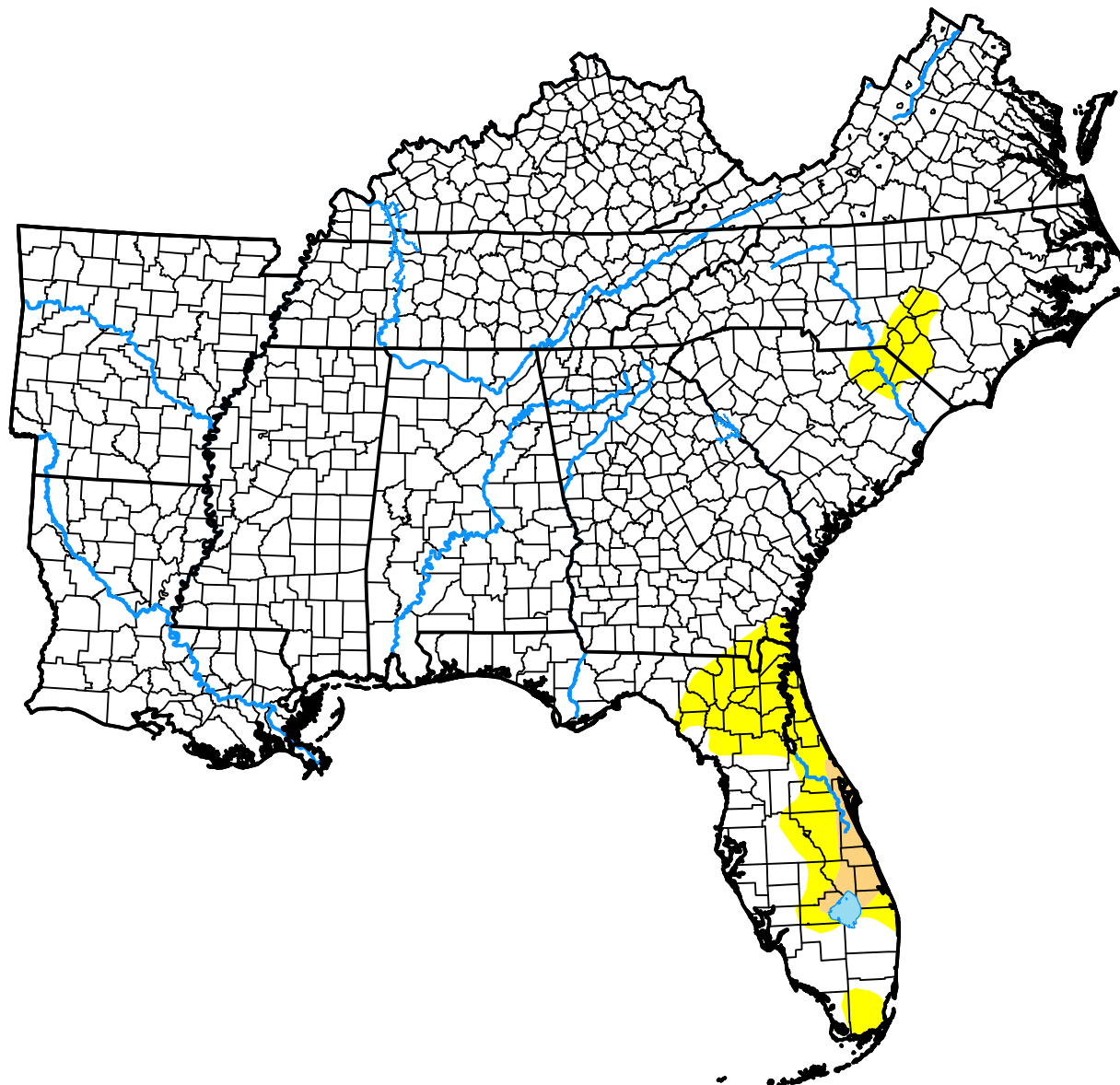


# U.S. Drought Monitor

## USDA Southeast Climate Hub

**November 24, 2009**  
(Released Wednesday, Nov. 25, 2009)  
Valid 7 a.m. EST



### Intensity:



*The Drought Monitor focuses on broad-scale conditions. Local conditions may vary. For more information on the Drought Monitor, go to <https://droughtmonitor.unl.edu/About.aspx>*

### Author:

Eric Luebehusen  
U.S. Department of Agriculture



[droughtmonitor.unl.edu](https://droughtmonitor.unl.edu)