

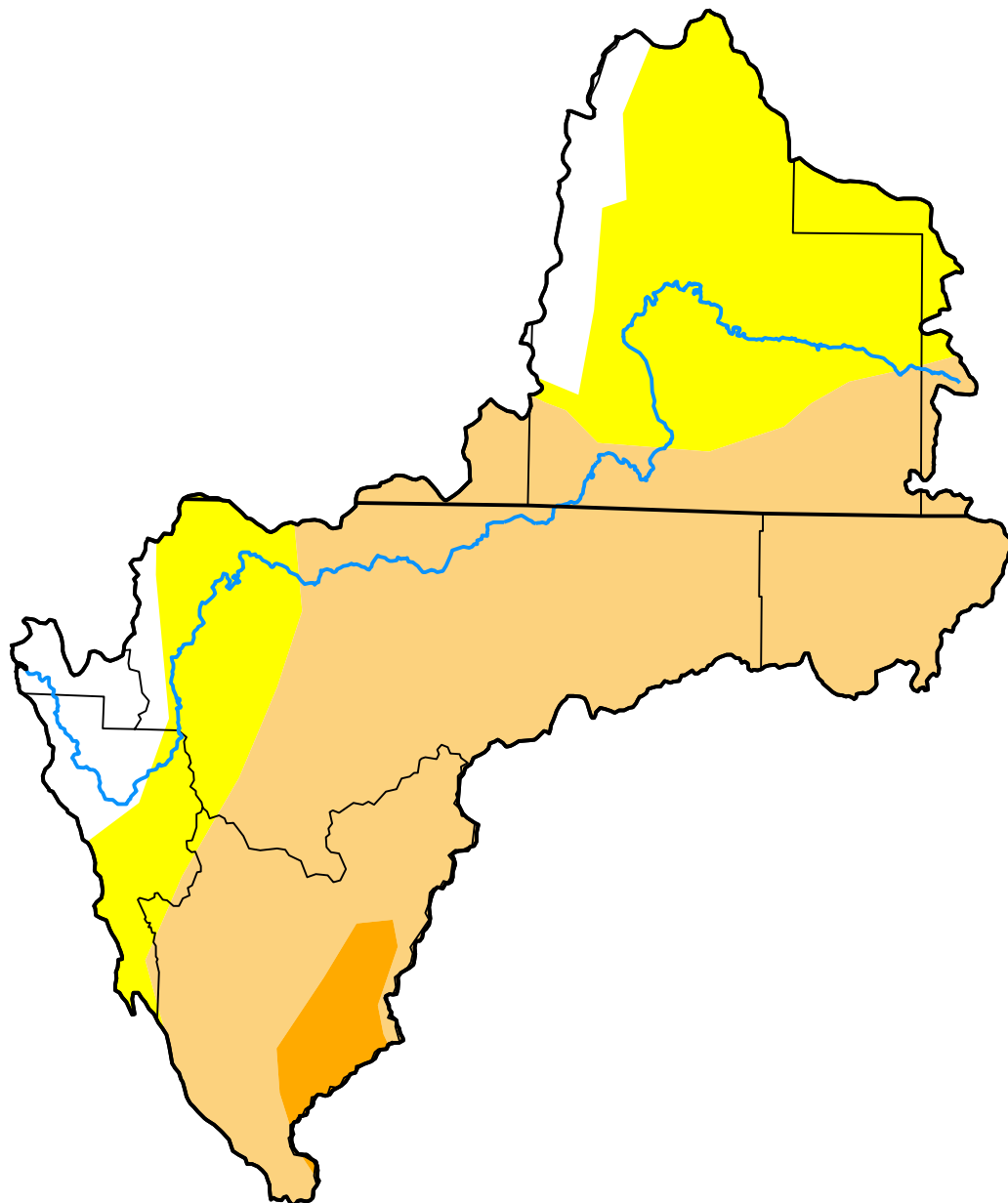
U.S. Drought Monitor Klamath River Basin

December 1, 2009
(Released Thursday, Dec. 3, 2009)

Valid 7 a.m. EST

Drought Conditions (Percent Area)

	None	D0-D4	D1-D4	D2-D4	D3-D4	D4
Current	8.72	91.28	58.85	2.86	0.00	0.00
Last Week <i>11-24-2009</i>	8.72	91.28	58.28	2.86	0.00	0.00
3 Months Ago <i>09-01-2009</i>	6.74	93.26	72.34	28.71	0.00	0.00
Start of Calendar Year <i>12-30-2008</i>	8.39	91.61	63.03	7.41	0.00	0.00
Start of Water Year <i>09-29-2009</i>	0.00	100.00	72.34	28.71	0.00	0.00
One Year Ago <i>12-02-2008</i>	12.30	87.70	15.18	1.22	0.00	0.00



Intensity:

- None
- D0 Abnormally Dry
- D1 Moderate Drought
- D2 Severe Drought
- D3 Extreme Drought
- D4 Exceptional Drought

The Drought Monitor focuses on broad-scale conditions. Local conditions may vary. For more information on the Drought Monitor, go to <https://droughtmonitor.unl.edu/About.aspx>

Author:

Anthony Artusa
NOAA/NWS/NCEP/CPC



droughtmonitor.unl.edu