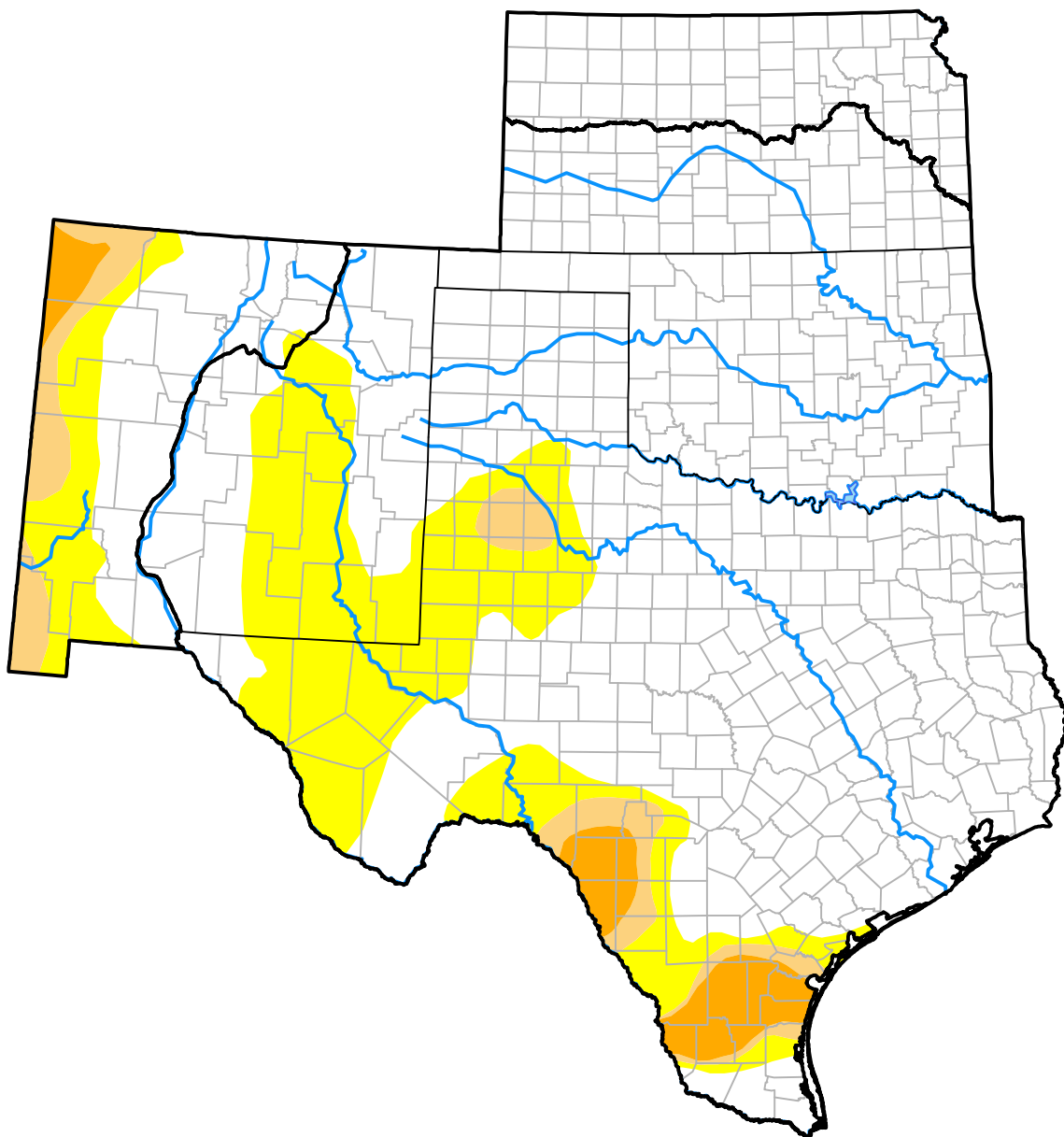


# U.S. Drought Monitor

## Southern Plains RDEWS

**December 15, 2009**  
 (Released Thursday, Dec. 17, 2009)

Valid 7 a.m. EST



*Drought Conditions (Percent Area)*

	None	D0	D1	D2	D3	D4
<b>Current</b>	72.14	20.25	4.36	3.25	0.00	0.00
<b>Last Week</b> <i>12-10-2009</i>	71.82	19.27	4.68	3.04	1.20	0.00
<b>3 Months Ago</b> <i>09-17-2009</i>	64.97	14.23	6.16	5.45	7.23	1.96
<b>Start of Calendar Year</b> <i>01-01-2009</i>	52.57	30.95	7.26	3.94	2.86	2.41
<b>Start of Water Year</b> <i>10-01-2009</i>	71.51	11.55	4.20	5.60	5.33	1.82
<b>One Year Ago</b> <i>12-18-2008</i>	51.96	29.73	8.95	4.09	2.86	2.41

***Intensity:***

- None
- D0 Abnormally Dry
- D1 Moderate Drought
- D2 Severe Drought
- D3 Extreme Drought
- D4 Exceptional Drought

*The Drought Monitor focuses on broad-scale conditions. Local conditions may vary. For more information on the Drought Monitor, go to <https://droughtmonitor.unl.edu/About.aspx>*

***Author:***

Michael Brewer  
 NCEI/NOAA

