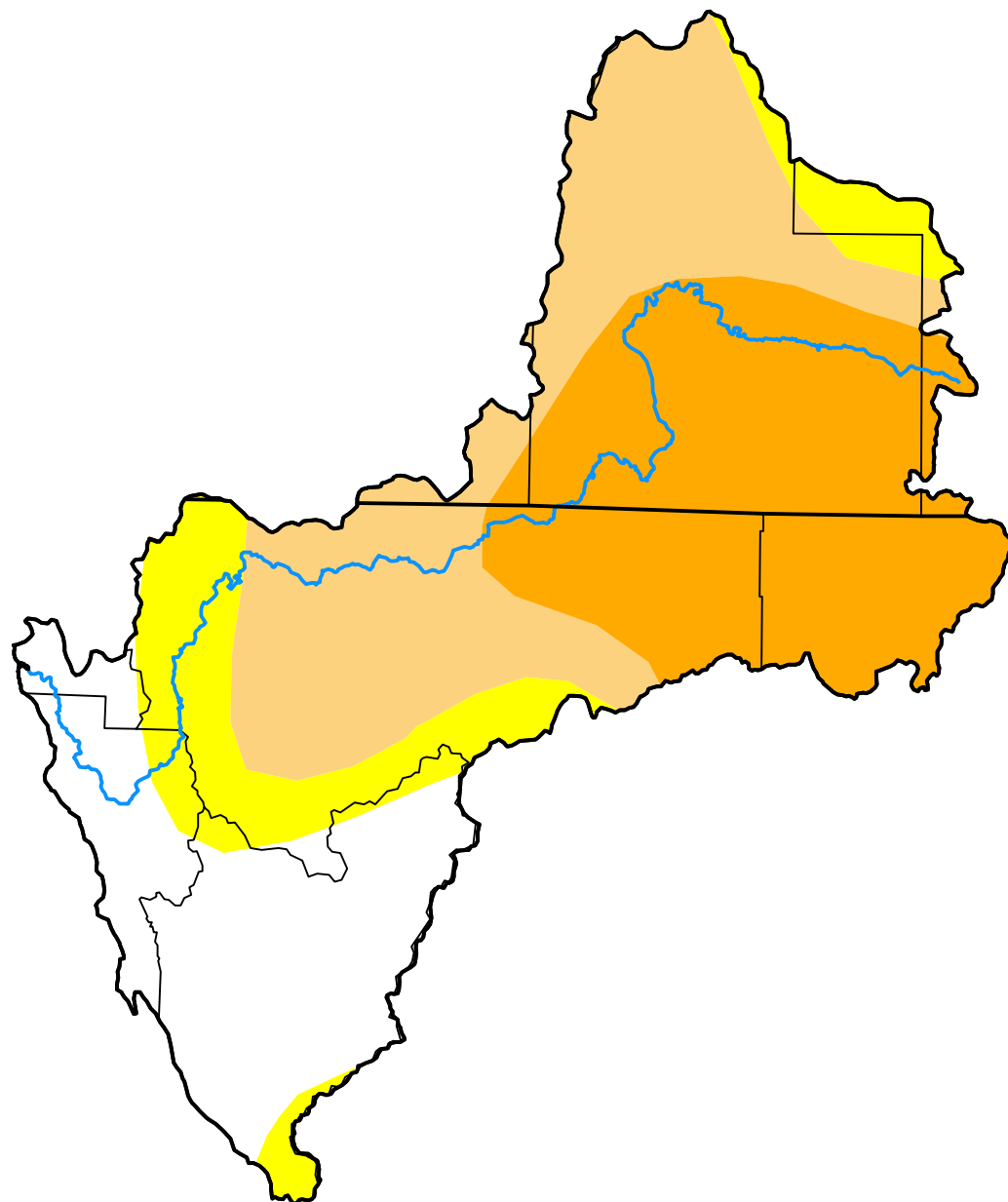


U.S. Drought Monitor Klamath River Basin

March 23, 2010
(Released Thursday, Mar. 25, 2010)
Valid 8 a.m. EDT



Drought Conditions (Percent Area)

	None	D0-D4	D1-D4	D2-D4	D3-D4	D4
Current	21.53	78.47	63.83	33.40	0.00	0.00
Last Week <i>03-16-2010</i>	21.51	78.49	63.83	33.40	0.00	0.00
3 Months Ago <i>12-22-2009</i>	0.00	100.00	58.85	2.86	0.00	0.00
Start of Calendar Year <i>12-29-2009</i>	0.00	100.00	58.85	2.86	0.00	0.00
Start of Water Year <i>09-29-2009</i>	0.00	100.00	72.34	28.71	0.00	0.00
One Year Ago <i>03-24-2009</i>	7.64	92.36	58.44	3.16	0.00	0.00

Intensity:

None	D2 Severe Drought
D0 Abnormally Dry	D3 Extreme Drought
D1 Moderate Drought	D4 Exceptional Drought

The Drought Monitor focuses on broad-scale conditions. Local conditions may vary. For more information on the Drought Monitor, go to <https://droughtmonitor.unl.edu/About.aspx>

Author:

Brad Rippey
U.S. Department of Agriculture



droughtmonitor.unl.edu