

# U.S. Drought Monitor

## Wind River and Surrounding Area

**April 6, 2010**

(Released Thursday, Apr. 8, 2010)

Valid 8 a.m. EDT

*Drought Conditions (Percent Area)*

|  | None | D0-D4 | D1-D4 | D2-D4 | D3-D4 | D4   |
|--|------|-------|-------|-------|-------|------|
| <b>Current</b>                                     | 0.00 | 0.00  | 0.00  | 0.00  | 0.00  | 0.00 |
| <b>Last Week</b><br><i>04-01-2010</i>              | 0.00 | 0.00  | 0.00  | 0.00  | 0.00  | 0.00 |
| <b>3 Months Ago</b><br><i>01-07-2010</i>           | 0.00 | 0.00  | 0.00  | 0.00  | 0.00  | 0.00 |
| <b>Start of Calendar Year</b><br><i>12-31-2009</i> | 0.00 | 0.00  | 0.00  | 0.00  | 0.00  | 0.00 |
| <b>Start of Water Year</b><br><i>10-01-2009</i>    | 0.00 | 0.00  | 0.00  | 0.00  | 0.00  | 0.00 |
| <b>One Year Ago</b><br><i>04-09-2009</i>           | 0.00 | 0.00  | 0.00  | 0.00  | 0.00  | 0.00 |

*Note: Statistics are for the surrounding area including the reservation.*

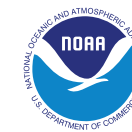
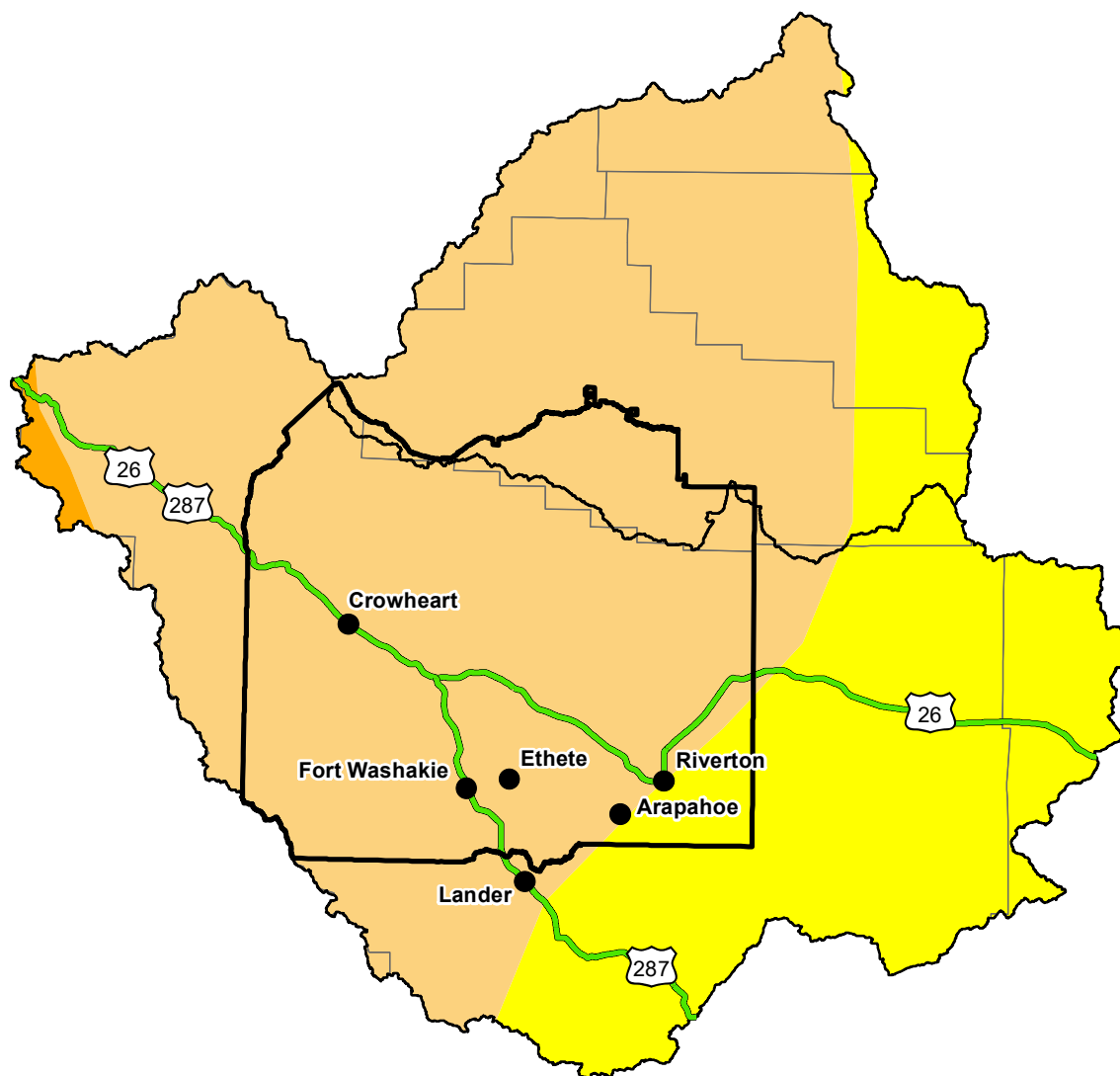
### Intensity:

|   |  |
|---|--|
|  None                  |  D2 Severe Drought        |
|  D0 Abnormally Dry   |  D3 Extreme Drought     |
|  D1 Moderate Drought |  D4 Exceptional Drought |

*The Drought Monitor focuses on broad-scale conditions. Local conditions may vary. For more information on the Drought Monitor, go to <https://droughtmonitor.unl.edu/About.aspx>*

### Author:

Anthony Artusa  
NOAA/NWS/NCEP/CPC



<http://droughtmonitor.unl.edu/>