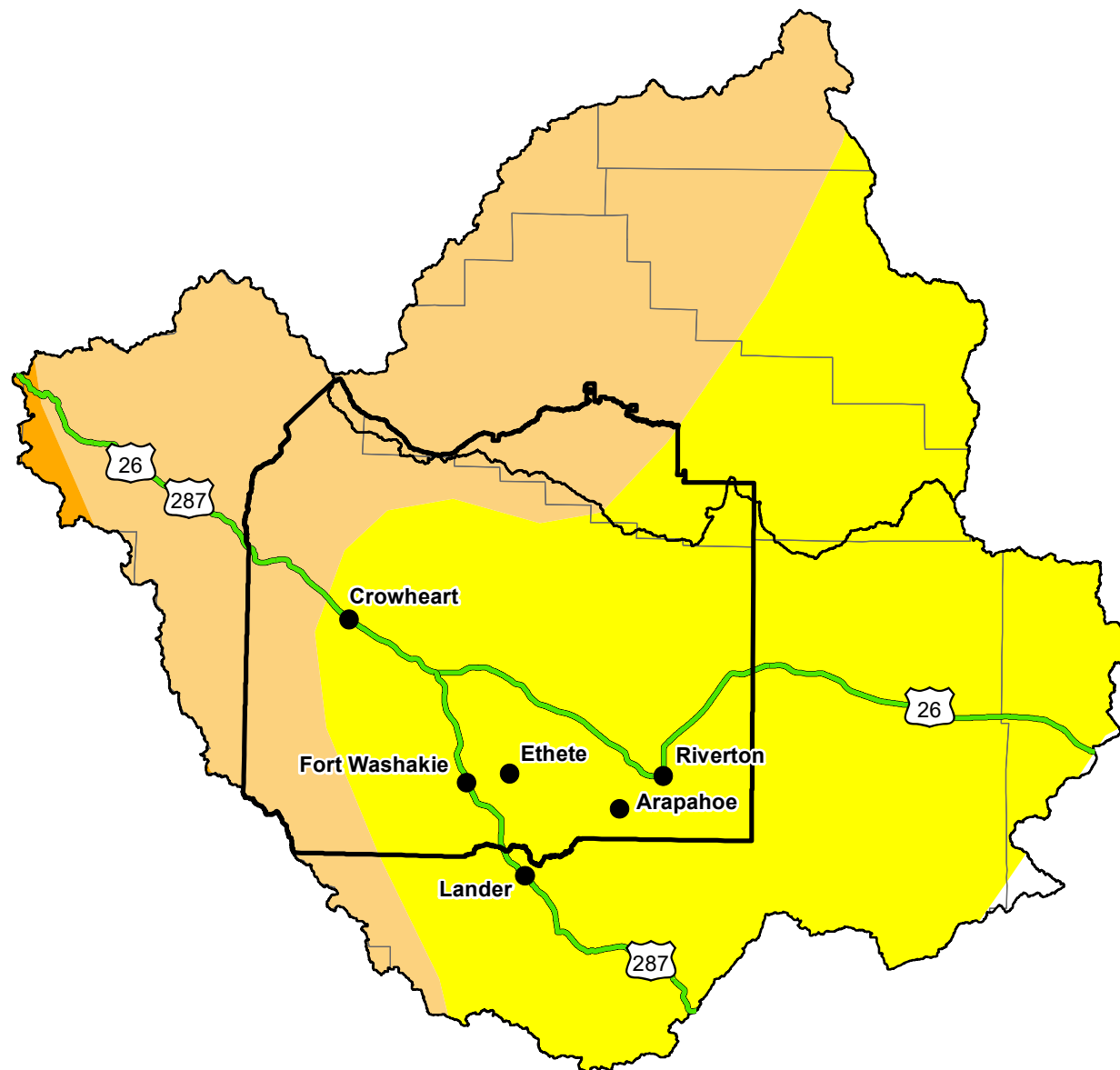


U.S. Drought Monitor

Wind River and Surrounding Area

May 11, 2010
(Released Thursday, May. 13, 2010)
Valid 8 a.m. EDT



Intensity:

- D0 Abnormally Dry
- D1 Moderate Drought
- D2 Severe Drought
- D3 Extreme Drought
- D4 Exceptional Drought

The Drought Monitor focuses on broad-scale conditions. Local conditions may vary. For more information on the Drought Monitor, go to <https://droughtmonitor.unl.edu/About.aspx>

Author:

Michael Brewer
NCEI/NOAA



<http://droughtmonitor.unl.edu/>