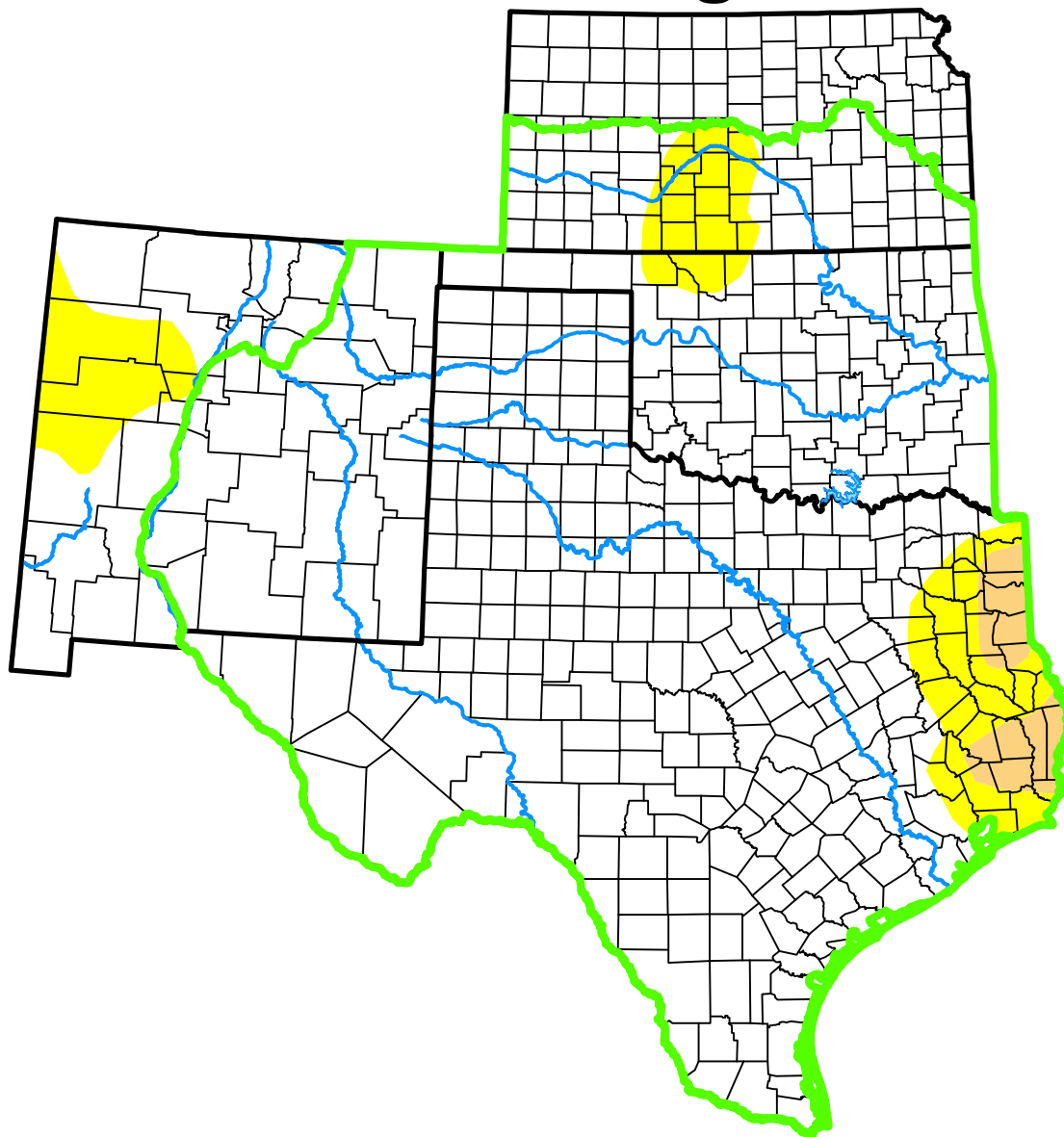


U.S. Drought Monitor

Southern Plains DEWS and Surrounding Areas



May 18, 2010

(Released Thursday, May. 20, 2010)

Valid 8 a.m. EDT

Drought Conditions (Percent Area)

	None	D0-D4	D1-D4	D2-D4	D3-D4	D4
Current	91.25	8.75	2.12	0.00	0.00	0.00
Last Week <i>05-11-2010</i>	86.29	13.71	2.07	0.00	0.00	0.00
3 Months Ago <i>02-16-2010</i>	91.27	8.73	0.00	0.00	0.00	0.00
Start of Calendar Year <i>12-29-2009</i>	77.84	22.16	4.21	1.39	0.00	0.00
Start of Water Year <i>09-29-2009</i>	72.67	27.33	16.75	13.22	7.42	1.89
One Year Ago <i>05-19-2009</i>	43.64	56.36	41.63	28.49	12.33	5.12

(Statistics for area highlighted in green)

Intensity:

None	D2 Severe Drought
D0 Abnormally Dry	D3 Extreme Drought
D1 Moderate Drought	D4 Exceptional Drought

The Drought Monitor focuses on broad-scale conditions. Local conditions may vary. For more information on the Drought Monitor, go to <https://droughtmonitor.unl.edu/About.aspx>

Author:

Michael Brewer
NCEI/NOAA



droughtmonitor.unl.edu