

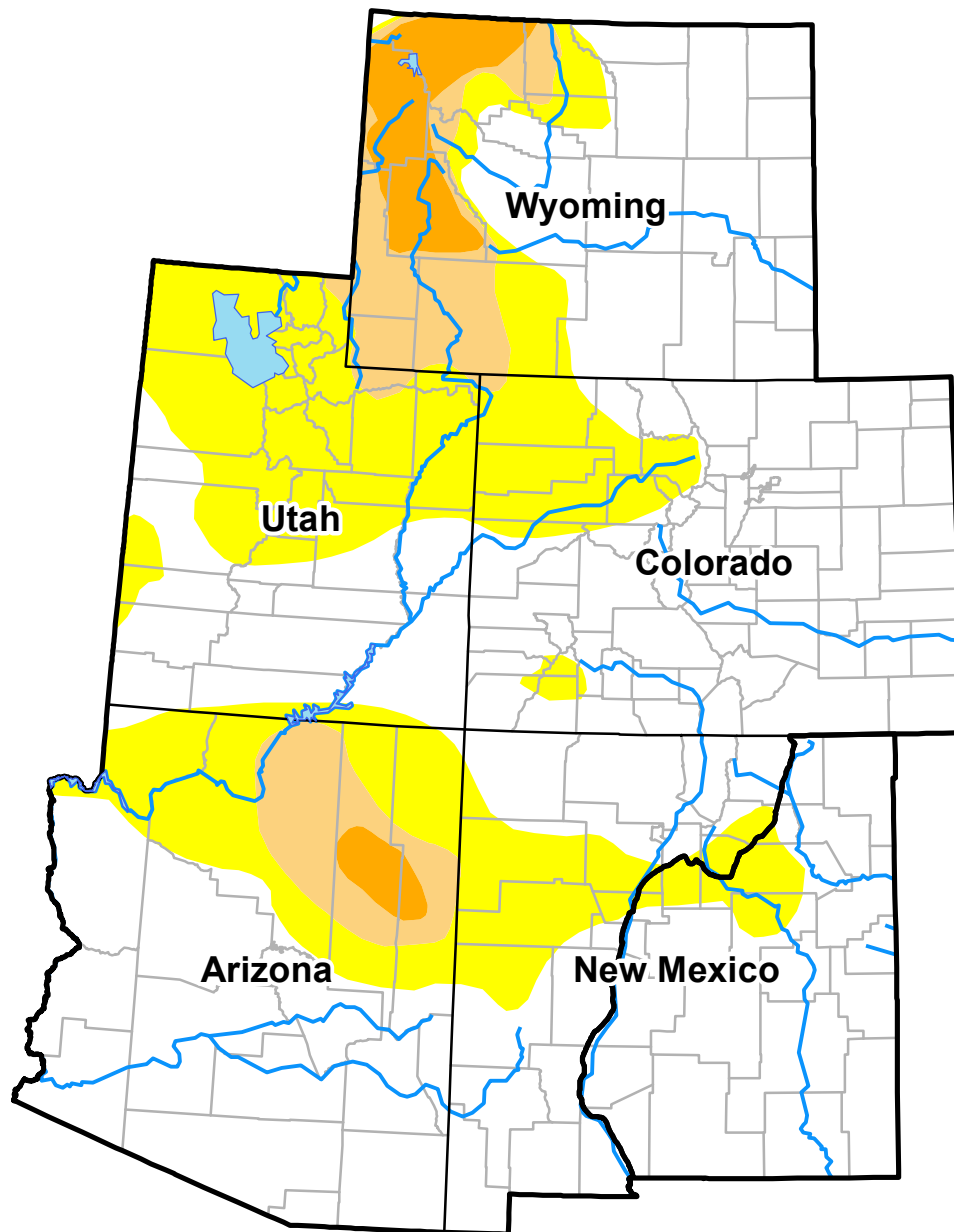
# U.S. Drought Monitor

## Intermountain West RDEWS

June 1, 2010

(Released Thursday, Jun. 3, 2010)

Valid 8 a.m. EDT



Drought Conditions (Percent Area)

	None	D0	D1	D2	D3	D4
<b>Current</b>	64.82	24.99	6.86	3.33	0.00	0.00
<b>Last Week</b> <i>05-25-2010</i>	64.79	25.00	6.89	3.33	0.00	0.00
<b>3 Months Ago</b> <i>03-02-2010</i>	39.76	42.30	14.73	3.20	0.00	0.00
<b>Start of Calendar Year</b> <i>12-29-2009</i>	47.48	20.51	13.15	17.61	1.26	0.00
<b>Start of Water Year</b> <i>09-29-2009</i>	61.44	22.94	15.61	0.00	0.00	0.00
<b>One Year Ago</b> <i>06-02-2009</i>	73.65	23.18	3.17	0.00	0.00	0.00

**Intensity:**

- D0 Abnormally Dry
- D1 Moderate Drought
- D2 Severe Drought
- D3 Extreme Drought
- D4 Exceptional Drought

The Drought Monitor focuses on broad-scale conditions. Local conditions may vary. See accompanying text summary for forecast statements.

**Author:**  
Eric Luebehusen  
U.S. Department of Agriculture

