

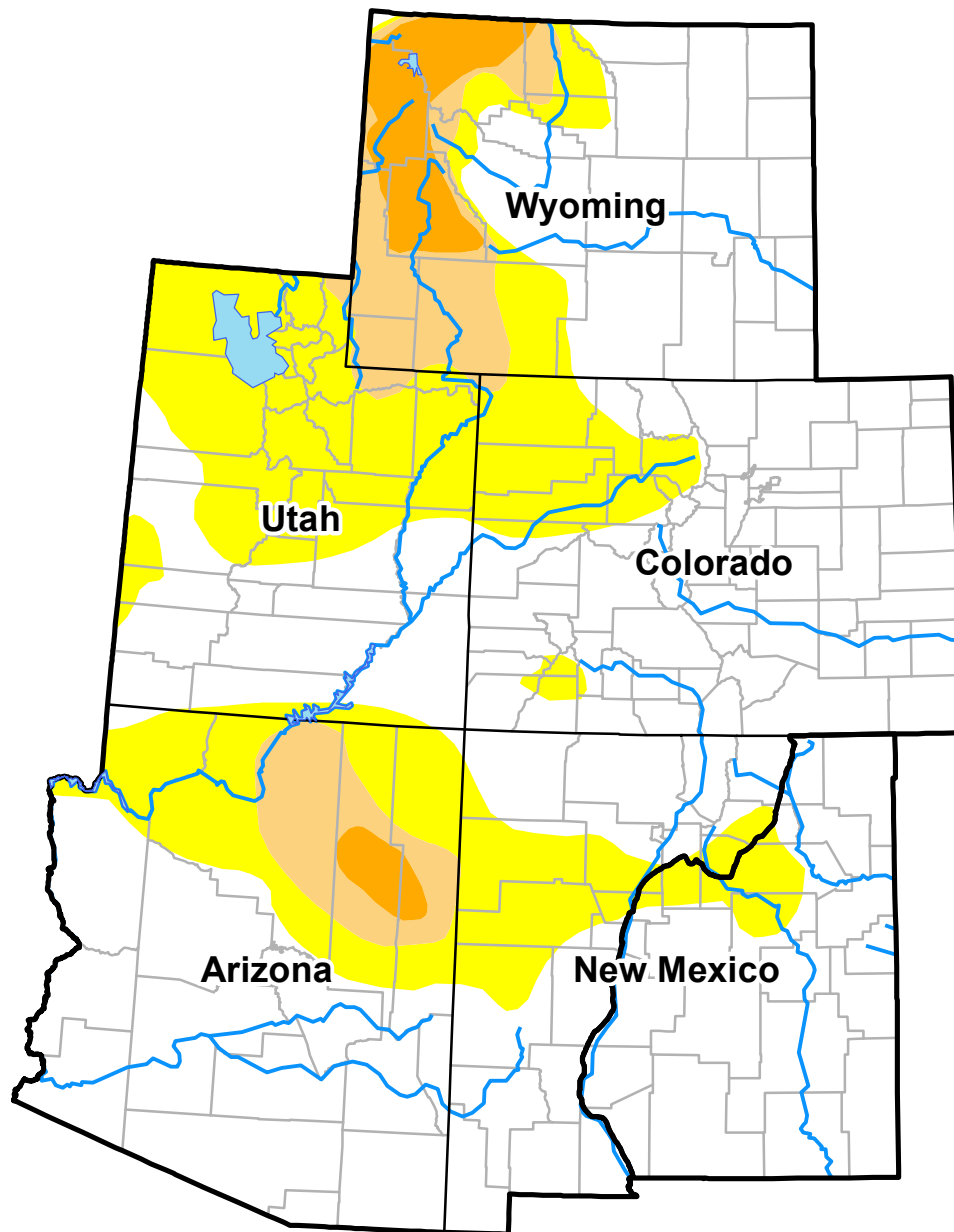
# U.S. Drought Monitor

## Intermountain West RDEWS

June 1, 2010

(Released Thursday, Jun. 3, 2010)

Valid 8 a.m. EDT



Drought Conditions (Percent Area)

	None	D0-D4	D1-D4	D2-D4	D3-D4	D4
<b>Current</b>	64.82	35.18	10.19	3.33	0.00	0.00
<b>Last Week</b> <i>05-25-2010</i>	64.79	35.21	10.21	3.33	0.00	0.00
<b>3 Months Ago</b> <i>03-02-2010</i>	36.05	63.95	20.40	3.64	0.00	0.00
<b>Start of Calendar Year</b> <i>12-29-2009</i>	47.48	52.52	32.01	18.86	1.26	0.00
<b>Start of Water Year</b> <i>09-29-2009</i>	61.44	38.56	15.61	0.00	0.00	0.00
<b>One Year Ago</b> <i>06-02-2009</i>	73.65	26.35	3.17	0.00	0.00	0.00

**Intensity:**

- D0 Abnormally Dry
- D1 Moderate Drought
- D2 Severe Drought
- D3 Extreme Drought
- D4 Exceptional Drought

The Drought Monitor focuses on broad-scale conditions. Local conditions may vary. See accompanying text summary for forecast statements.

**Author:**  
Eric Luebehusen  
U.S. Department of Agriculture

