

# U.S. Drought Monitor

## Wind River and Surrounding Area

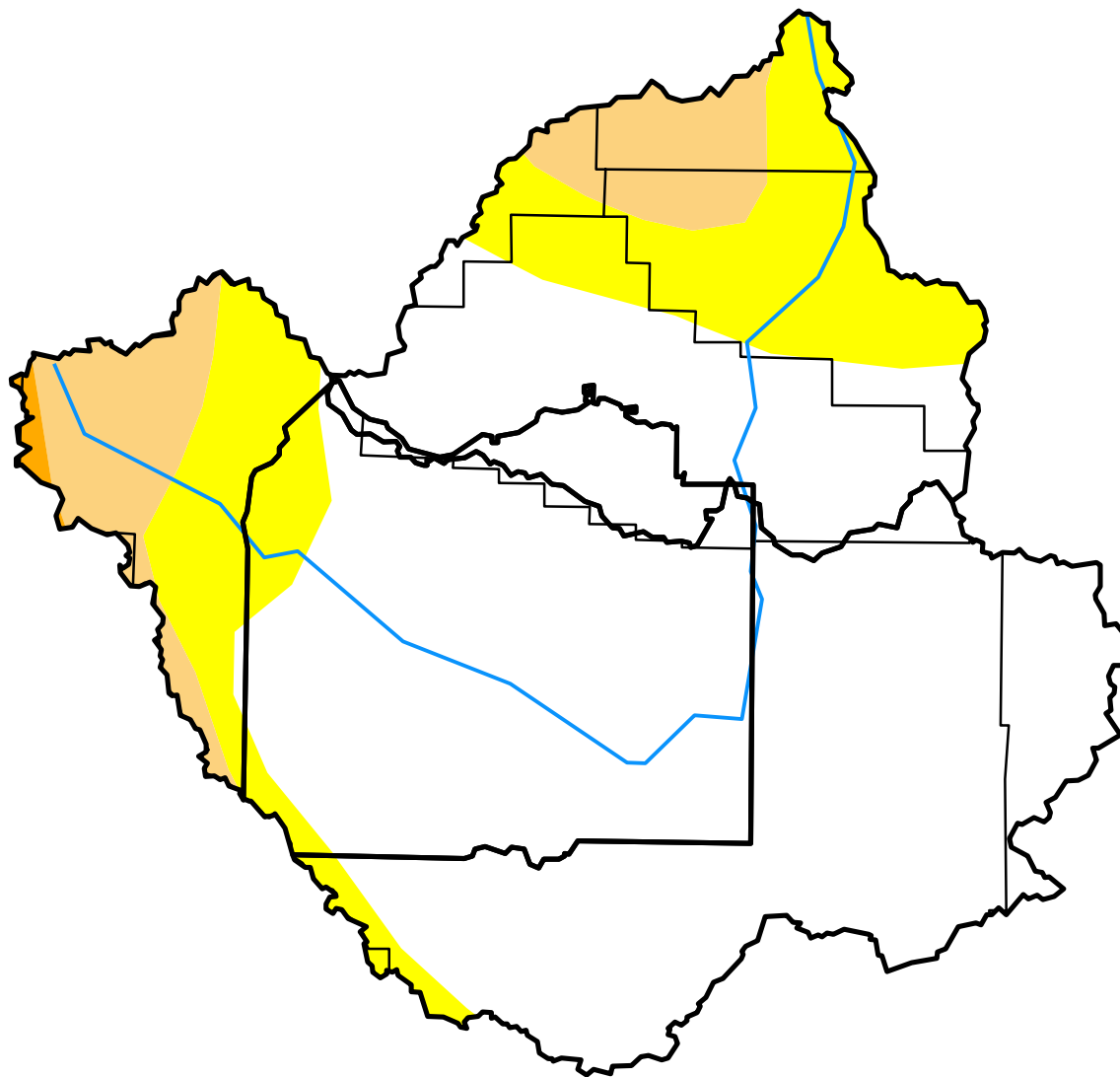
June 1, 2010

(Released Thursday, Jun. 3, 2010)

Valid 8 a.m. EDT

Drought Conditions (Percent Area)

	None	D0	D1	D2	D3	D4
<b>Current</b>	71.89	18.78	8.97	0.36	0.00	0.00
<b>Last Week</b> <i>05-25-2010</i>	71.89	18.78	8.97	0.36	0.00	0.00
<b>3 Months Ago</b> <i>03-02-2010</i>	0.00	77.92	22.08	0.00	0.00	0.00
<b>Start of Calendar Year</b> <i>12-29-2009</i>	100.00	0.00	0.00	0.00	0.00	0.00
<b>Start of Water Year</b> <i>09-29-2009</i>	100.00	0.00	0.00	0.00	0.00	0.00
<b>One Year Ago</b> <i>06-02-2009</i>	100.00	0.00	0.00	0.00	0.00	0.00



### Intensity:

- D0 Abnormally Dry
- D1 Moderate Drought
- D2 Severe Drought
- D3 Extreme Drought
- D4 Exceptional Drought

The Drought Monitor focuses on broad-scale conditions. Local conditions may vary. See accompanying text summary for forecast statements.

### Author:

Eric Luebehusen  
U.S. Department of Agriculture



<http://droughtmonitor.unl.edu/>