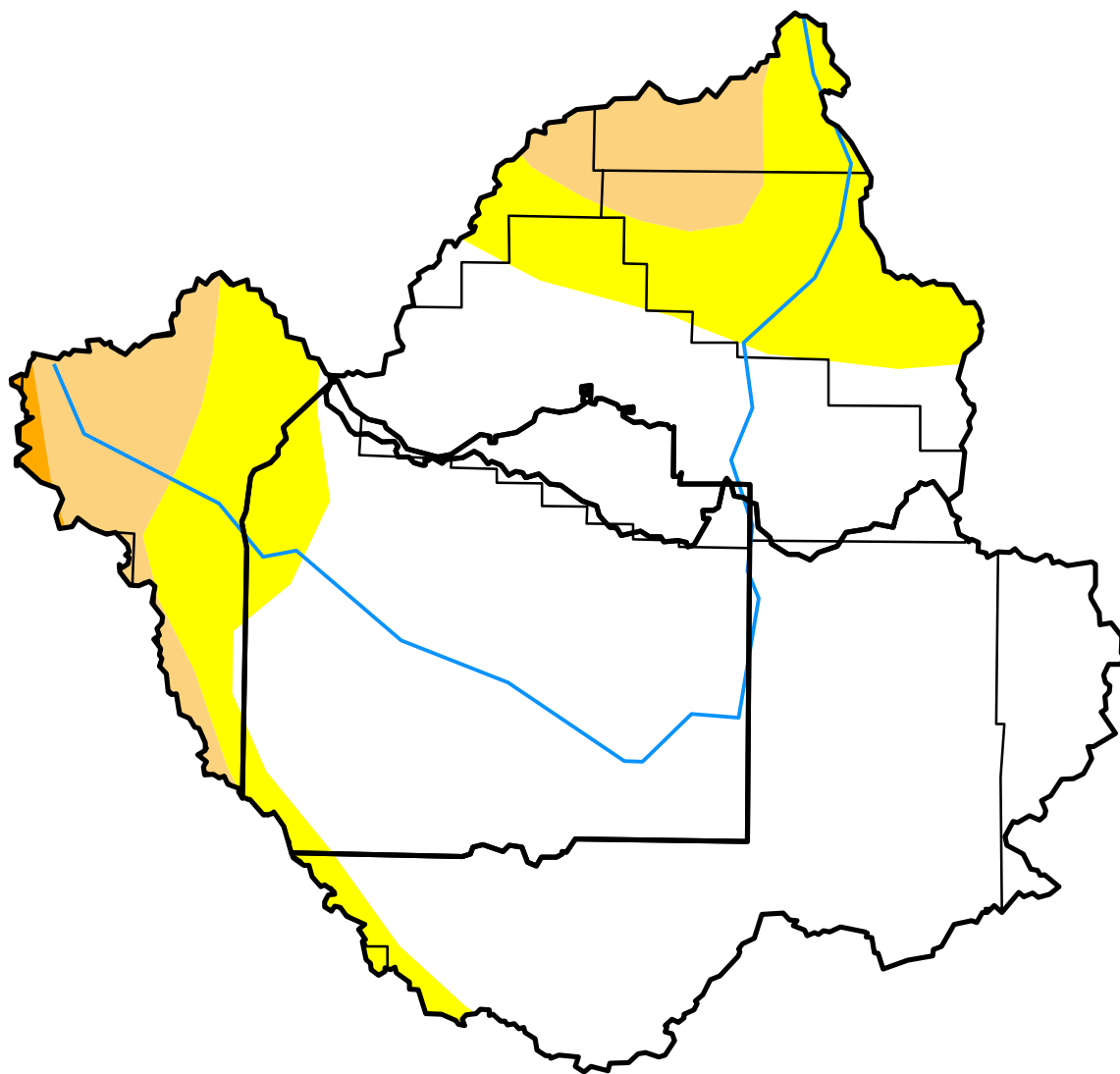


U.S. Drought Monitor

Wind River and Surrounding Area

June 1, 2010
 (Released Thursday, Jun. 3, 2010)
 Valid 8 a.m. EDT



Drought Conditions (Percent Area)

	None	D0-D4	D1-D4	D2-D4	D3-D4	D4
Current	71.89	28.11	9.33	0.36	0.00	0.00
Last Week <i>05-25-2010</i>	71.89	28.11	9.33	0.36	0.00	0.00
3 Months Ago <i>03-02-2010</i>	0.00	100.00	22.08	0.00	0.00	0.00
Start of Calendar Year <i>12-29-2009</i>	100.00	0.00	0.00	0.00	0.00	0.00
Start of Water Year <i>09-29-2009</i>	100.00	0.00	0.00	0.00	0.00	0.00
One Year Ago <i>06-02-2009</i>	100.00	0.00	0.00	0.00	0.00	0.00

Intensity:

- D0 Abnormally Dry
- D1 Moderate Drought
- D2 Severe Drought
- D3 Extreme Drought
- D4 Exceptional Drought

The Drought Monitor focuses on broad-scale conditions. Local conditions may vary. See accompanying text summary for forecast statements.

Author:

Eric Luebehusen
 U.S. Department of Agriculture

