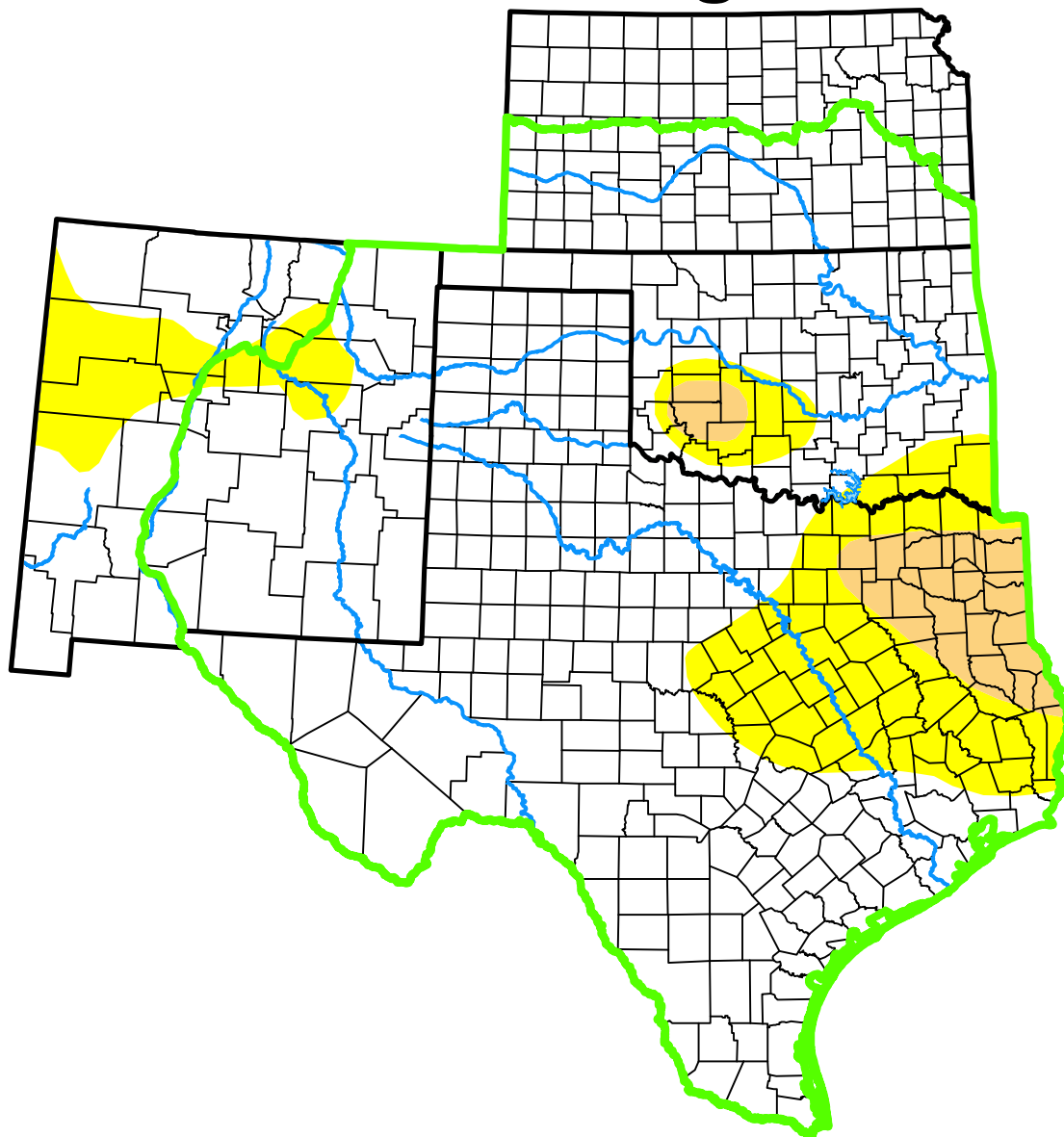


# U.S. Drought Monitor

## Southern Plains DEWS and Surrounding Areas



**June 8, 2010**

*(Released Thursday, Jun. 10, 2010)*

**Valid 8 a.m. EDT**

*Drought Conditions (Percent Area)*

	None	D0-D4	D1-D4	D2-D4	D3-D4	D4
<b>Current</b>	81.25	18.75	4.93	0.00	0.00	0.00
<b>Last Week</b> <i>06-01-2010</i>	81.31	18.69	5.75	0.00	0.00	0.00
<b>3 Months Ago</b> <i>03-09-2010</i>	96.61	3.39	0.00	0.00	0.00	0.00
<b>Start of Calendar Year</b> <i>12-29-2009</i>	77.84	22.16	4.21	1.39	0.00	0.00
<b>Start of Water Year</b> <i>09-29-2009</i>	72.67	27.33	16.75	13.22	7.42	1.89
<b>One Year Ago</b> <i>06-09-2009</i>	34.62	65.38	38.71	20.16	10.53	4.61

(Statistics for area highlighted in green)

### Intensity:

None	D2 Severe Drought
D0 Abnormally Dry	D3 Extreme Drought
D1 Moderate Drought	D4 Exceptional Drought

*The Drought Monitor focuses on broad-scale conditions. Local conditions may vary. For more information on the Drought Monitor, go to <https://droughtmonitor.unl.edu/About.aspx>*

### Author:

Brian Fuchs  
National Drought Mitigation Center



**droughtmonitor.unl.edu**