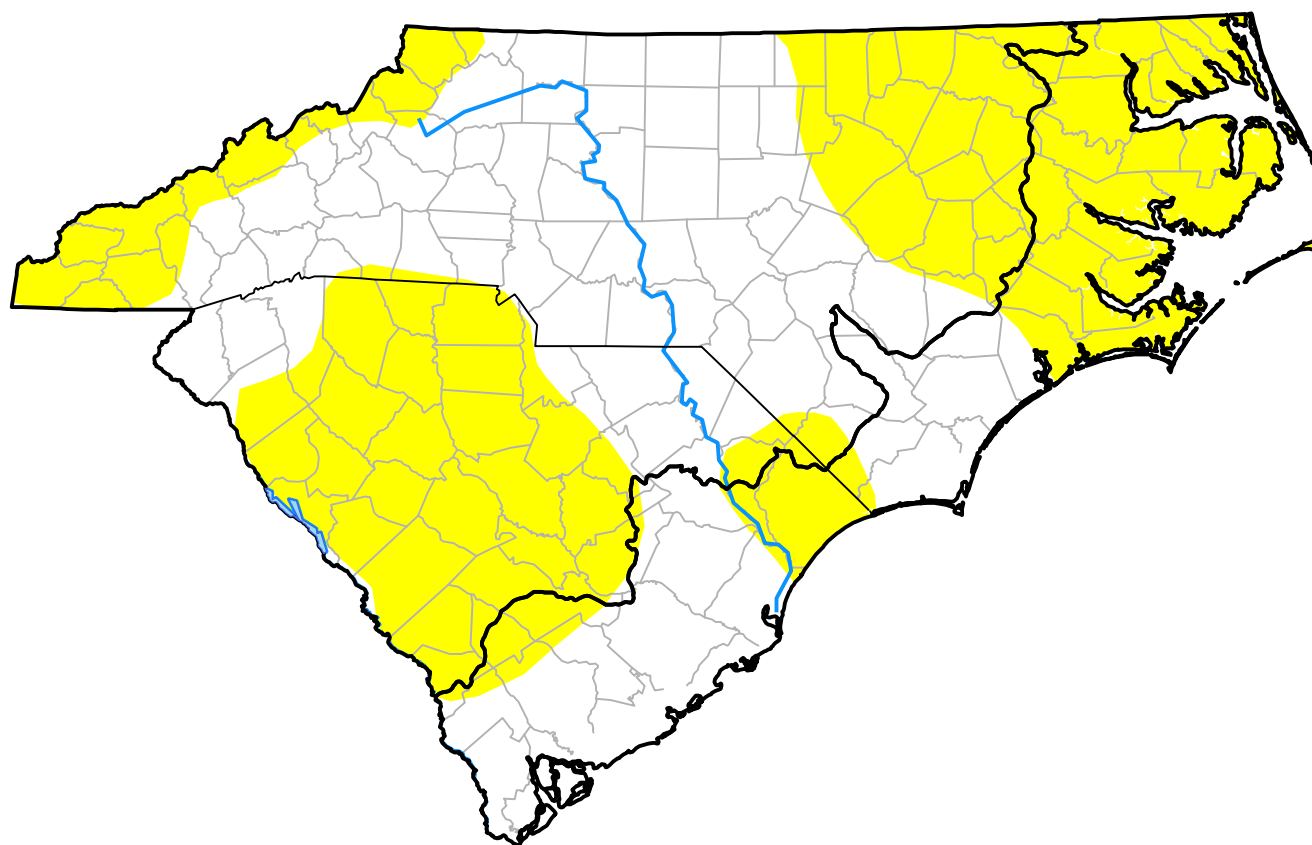


# Carolinas RDEWS and Surrounding Areas

(Released Thursday, Jul. 1, 2010)

10:00 a.m. EDT



Intensity:



*The Drought Monitor focuses on broad-scale conditions. Local conditions may vary. For more information on the Drought Monitor, go to <https://droughtmonitor.unl.edu/About.aspx>*

Author:

Laura Edwards  
Western Regional Climate Center

