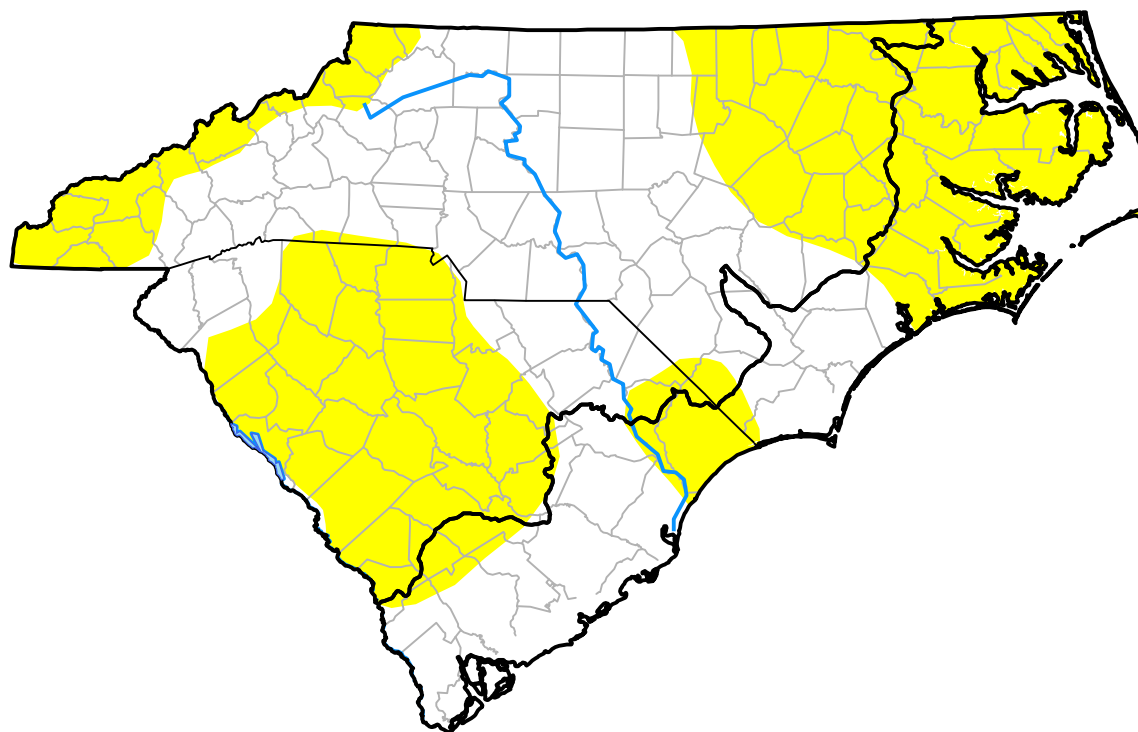


Carolinas RDEWS and Surrounding Areas

Drought Conditions (Percent Area)

	None	D0-D4	D1-D4	D2-D4	D3-D4	D4
Current	50.85	49.15	0.00	0.00	0.00	0.00
Last Week <i>06-24-2010</i>	73.45	26.55	0.00	0.00	0.00	0.00
3 Months Ago <i>04-01-2010</i>	100.00	0.00	0.00	0.00	0.00	0.00
Start of Calendar Year <i>12-31-2009</i>	100.00	0.00	0.00	0.00	0.00	0.00
Start of Water Year <i>10-01-2009</i>	41.99	58.01	26.11	5.18	0.00	0.00
One Year Ago <i>07-02-2009</i>	72.42	27.58	0.00	0.00	0.00	0.00



Intensity:

- None
- D0 Abnormally Dry
- D1 Moderate Drought
- D2 Severe Drought
- D3 Extreme Drought
- D4 Exceptional Drought

The Drought Monitor focuses on broad-scale conditions. Local conditions may vary. For more information on the Drought Monitor, go to <https://droughtmonitor.unl.edu/About.aspx>

Author:

Laura Edwards
Western Regional Climate Center

