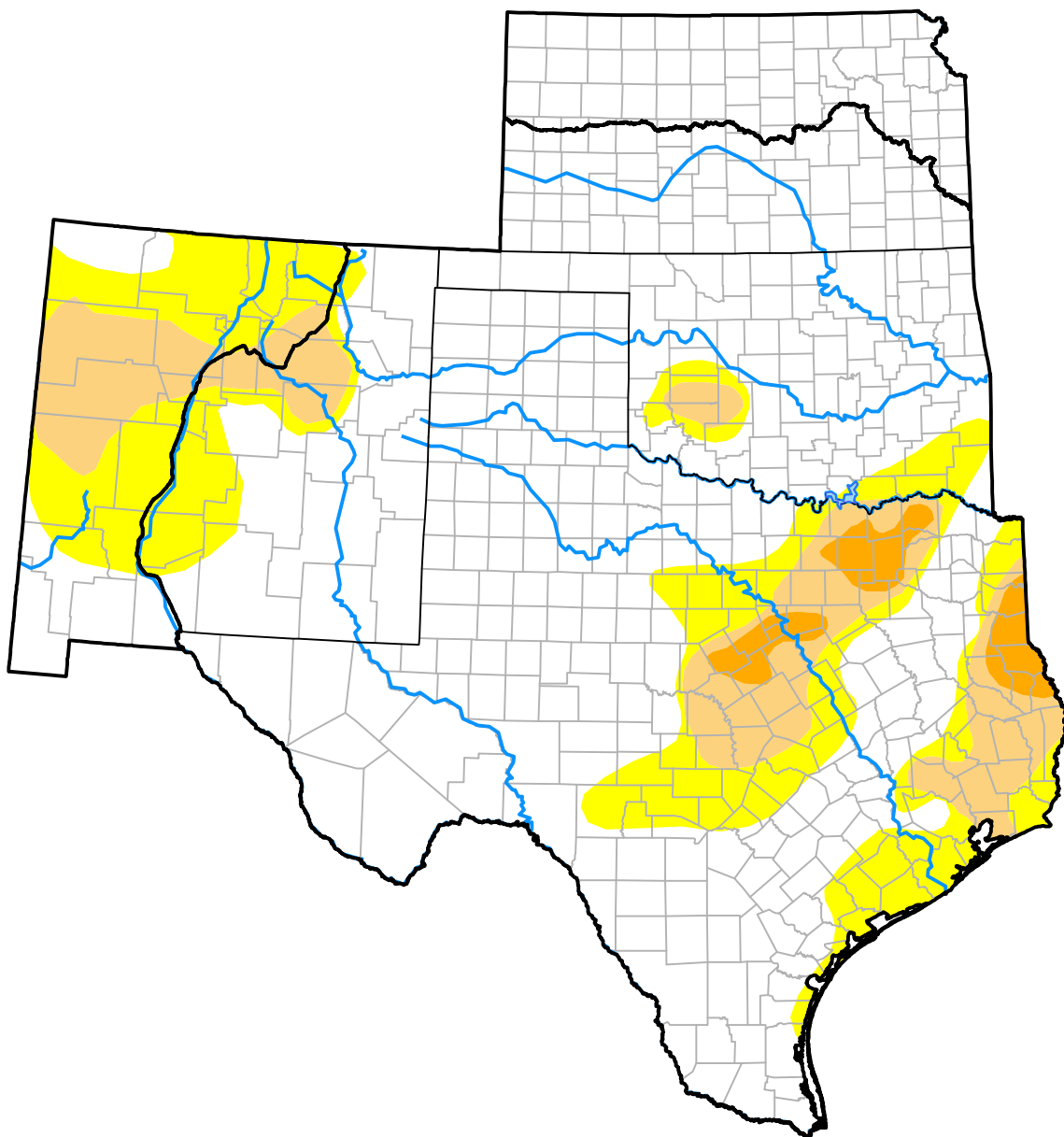


# U.S. Drought Monitor

## Southern Plains RDEWS

**June 29, 2010**  
 (Released Thursday, Jul. 1, 2010)  
 Valid 8 a.m. EDT



*Drought Conditions (Percent Area)*

	None	D0-D4	D1-D4	D2-D4	D3-D4	D4
<b>Current</b>	67.87	32.13	13.23	2.30	0.00	0.00
<b>Last Week</b> <i>06-24-2010</i>	55.76	44.24	12.63	0.00	0.00	0.00
<b>3 Months Ago</b> <i>04-01-2010</i>	92.38	7.62	0.00	0.00	0.00	0.00
<b>Start of Calendar Year</b> <i>12-31-2009</i>	72.79	27.21	6.75	1.95	0.00	0.00
<b>Start of Water Year</b> <i>10-01-2009</i>	71.51	28.49	16.94	12.74	7.15	1.82
<b>One Year Ago</b> <i>07-02-2009</i>	31.80	68.20	33.77	17.23	11.62	6.45

***Intensity:***

- None
- D0 Abnormally Dry
- D1 Moderate Drought
- D2 Severe Drought
- D3 Extreme Drought
- D4 Exceptional Drought

*The Drought Monitor focuses on broad-scale conditions. Local conditions may vary. For more information on the Drought Monitor, go to <https://droughtmonitor.unl.edu/About.aspx>*

***Author:***

Laura Edwards  
 Western Regional Climate Center

