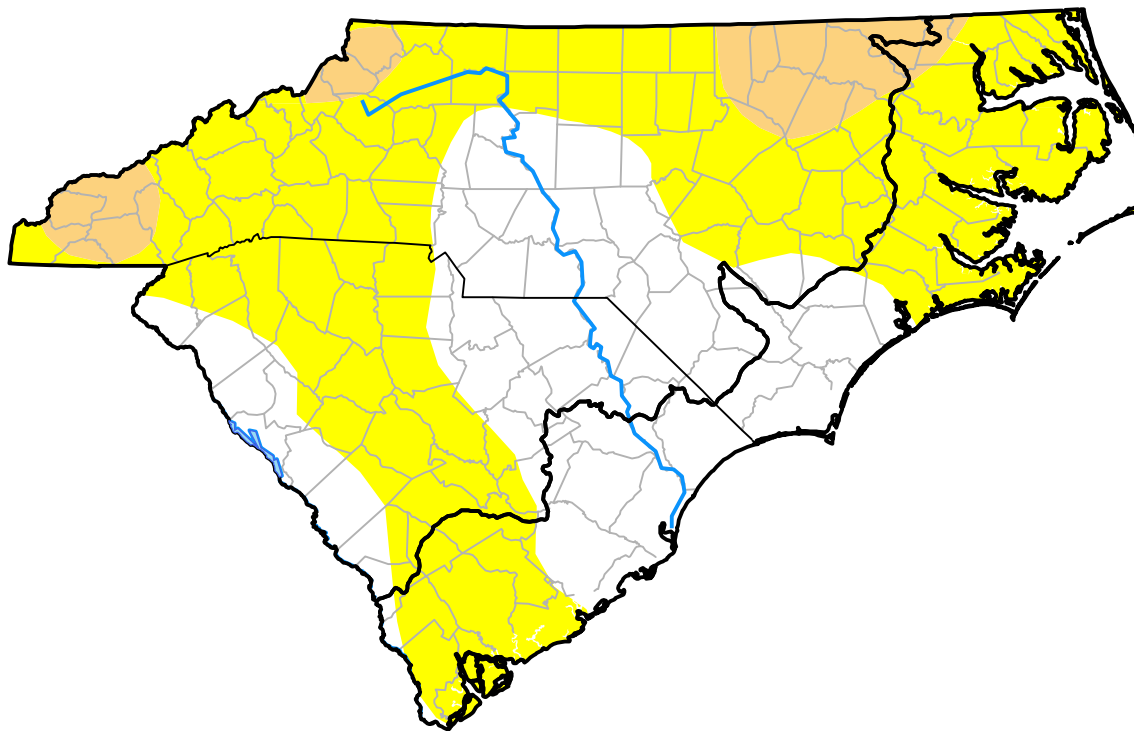


U.S. Drought Monitor

Coastal Carolinas RDEWS

July 6, 2010
 (Released Thursday, Jul. 8, 2010)
 Valid 8 a.m. EDT



Drought Conditions (Percent Area)

	None	D0	D1	D2	D3	D4
Current	35.28	62.72	2.00	0.00	0.00	0.00
Last Week <i>07-01-2010</i>	47.32	52.68	0.00	0.00	0.00	0.00
3 Months Ago <i>04-08-2010</i>	100.00	0.00	0.00	0.00	0.00	0.00
Start of Calendar Year <i>12-31-2009</i>	100.00	0.00	0.00	0.00	0.00	0.00
Start of Water Year <i>10-01-2009</i>	52.93	26.40	20.67	0.00	0.00	0.00
One Year Ago <i>07-09-2009</i>	24.75	75.25	0.00	0.00	0.00	0.00

Intensity:



The Drought Monitor focuses on broad-scale conditions. Local conditions may vary. For more information on the Drought Monitor, go to <https://droughtmonitor.unl.edu/About.aspx>

Author:

Richard Tinker
 CPC/NOAA/NWS/NCEP



droughtmonitor.unl.edu