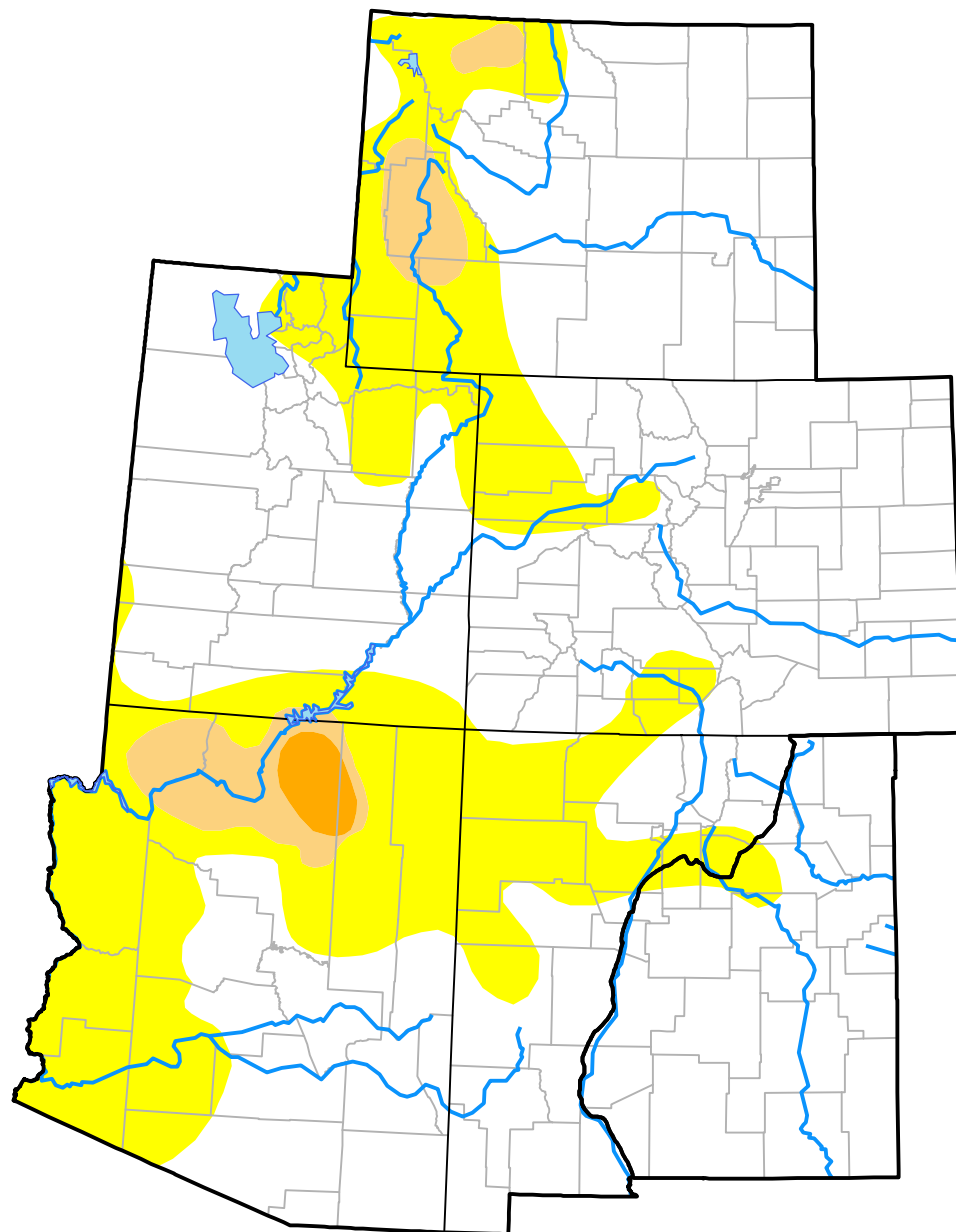


# U.S. Drought Monitor

## Intermountain West RDEWS

**August 31, 2010**  
 (Released Thursday, Sep. 2, 2010)  
 Valid 8 a.m. EDT



*Drought Conditions (Percent Area)*

	None	D0-D4	D1-D4	D2-D4	D3-D4	D4
<b>Current</b>	70.34	29.66	4.19	0.69	0.00	0.00
<b>Last Week</b> <i>08-26-2010</i>	70.34	29.66	4.19	0.69	0.00	0.00
<b>3 Months Ago</b> <i>06-03-2010</i>	68.03	31.97	8.96	2.93	0.00	0.00
<b>Start of Calendar Year</b> <i>12-31-2009</i>	48.91	51.09	28.14	16.58	1.11	0.00
<b>Start of Water Year</b> <i>10-01-2009</i>	61.73	38.27	13.72	0.00	0.00	0.00
<b>One Year Ago</b> <i>09-03-2009</i>	56.20	43.80	12.39	0.00	0.00	0.00

### Intensity:

 None	 D2 Severe Drought
 D0 Abnormally Dry	 D3 Extreme Drought
 D1 Moderate Drought	 D4 Exceptional Drought

*The Drought Monitor focuses on broad-scale conditions. Local conditions may vary. For more information on the Drought Monitor, go to <https://droughtmonitor.unl.edu/About.aspx>*

### Author:

Brad Rippey  
 U.S. Department of Agriculture



**droughtmonitor.unl.edu**