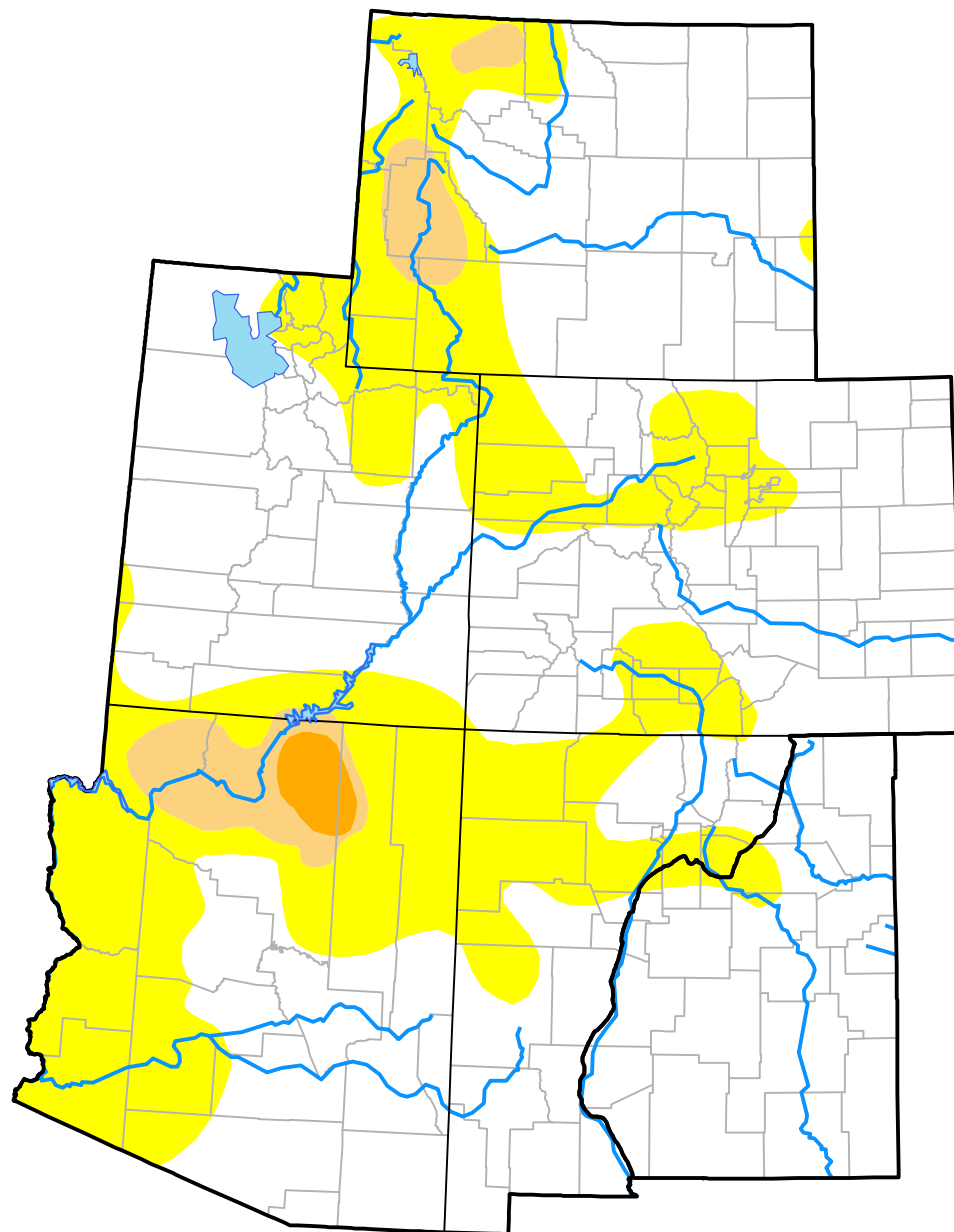


# U.S. Drought Monitor

## Intermountain West RDEWS

**September 7, 2010**  
*(Released Thursday, Sep. 9, 2010)*  
 Valid 8 a.m. EDT



*Drought Conditions (Percent Area)*

	None	D0-D4	D1-D4	D2-D4	D3-D4	D4
<b>Current</b>	67.62	32.38	4.19	0.71	0.00	0.00
<b>Last Week</b> <i>09-02-2010</i>	70.34	29.66	4.19	0.69	0.00	0.00
<b>3 Months Ago</b> <i>06-10-2010</i>	71.52	28.48	9.34	2.18	0.00	0.00
<b>Start of Calendar Year</b> <i>12-31-2009</i>	48.91	51.09	28.14	16.58	1.11	0.00
<b>Start of Water Year</b> <i>10-01-2009</i>	61.73	38.27	13.72	0.00	0.00	0.00
<b>One Year Ago</b> <i>09-10-2009</i>	51.48	48.52	16.27	0.00	0.00	0.00

### Intensity:

None	D2 Severe Drought
D0 Abnormally Dry	D3 Extreme Drought
D1 Moderate Drought	D4 Exceptional Drought

*The Drought Monitor focuses on broad-scale conditions. Local conditions may vary. For more information on the Drought Monitor, go to <https://droughtmonitor.unl.edu/About.aspx>*

### Author:

Brad Rippey  
 U.S. Department of Agriculture



**droughtmonitor.unl.edu**