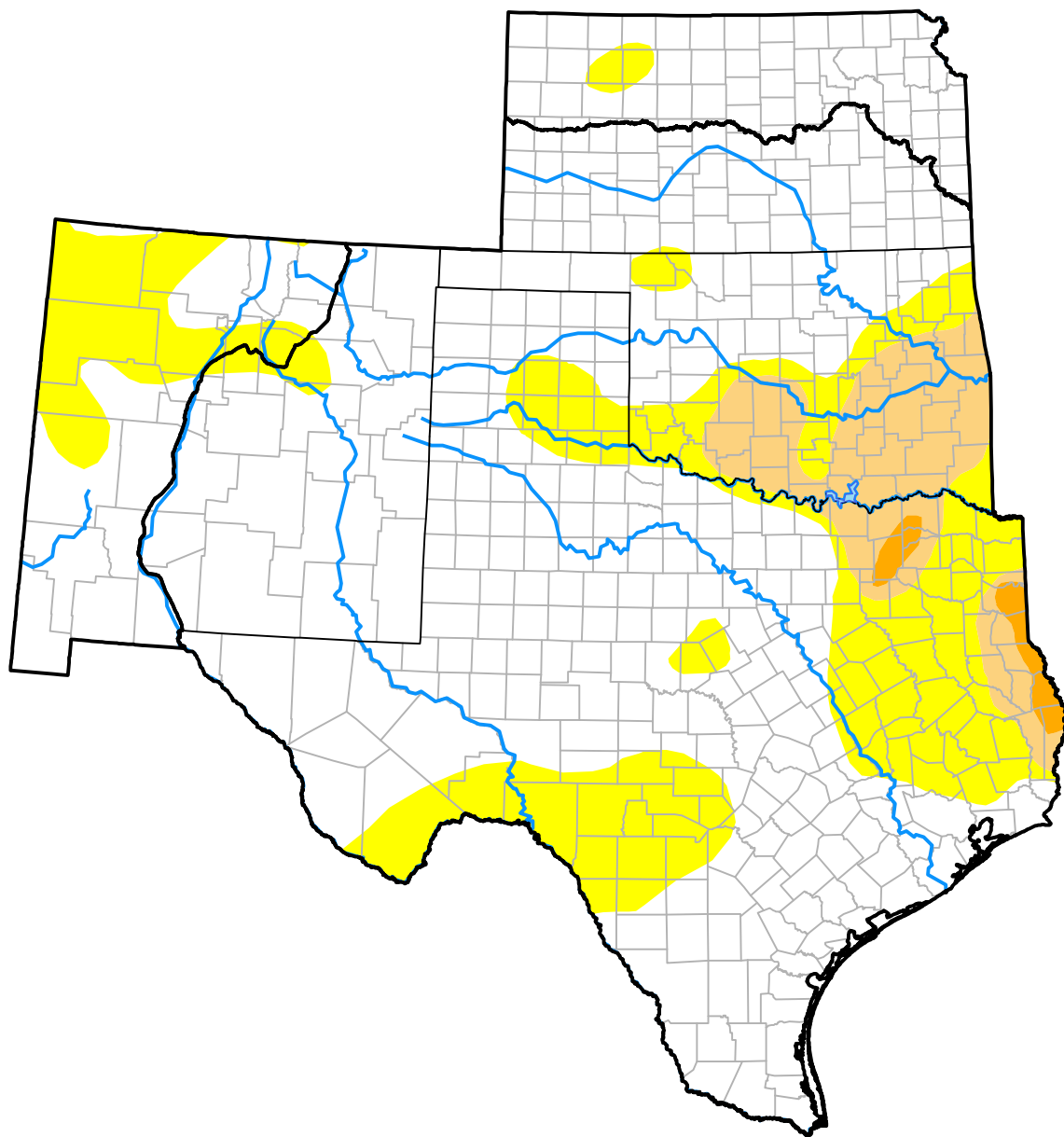


U.S. Drought Monitor

Southern Plains RDEWS

September 7, 2010
(Released Thursday, Sep. 9, 2010)
 Valid 8 a.m. EDT



Drought Conditions (Percent Area)

	None	D0	D1	D2	D3	D4
Current	68.18	23.30	7.65	0.88	0.00	0.00
Last Week <i>09-02-2010</i>	57.57	30.21	11.83	0.39	0.00	0.00
3 Months Ago <i>06-10-2010</i>	78.28	16.96	4.76	0.00	0.00	0.00
Start of Calendar Year <i>12-31-2009</i>	72.79	20.46	4.80	1.95	0.00	0.00
Start of Water Year <i>10-01-2009</i>	71.51	11.55	4.20	5.60	5.33	1.82
One Year Ago <i>09-10-2009</i>	58.01	17.76	7.68	2.08	5.14	9.33

Intensity:

None	D2 Severe Drought
D0 Abnormally Dry	D3 Extreme Drought
D1 Moderate Drought	D4 Exceptional Drought

The Drought Monitor focuses on broad-scale conditions. Local conditions may vary. For more information on the Drought Monitor, go to <https://droughtmonitor.unl.edu/About.aspx>

Author:

Brad Rippey
 U.S. Department of Agriculture



droughtmonitor.unl.edu