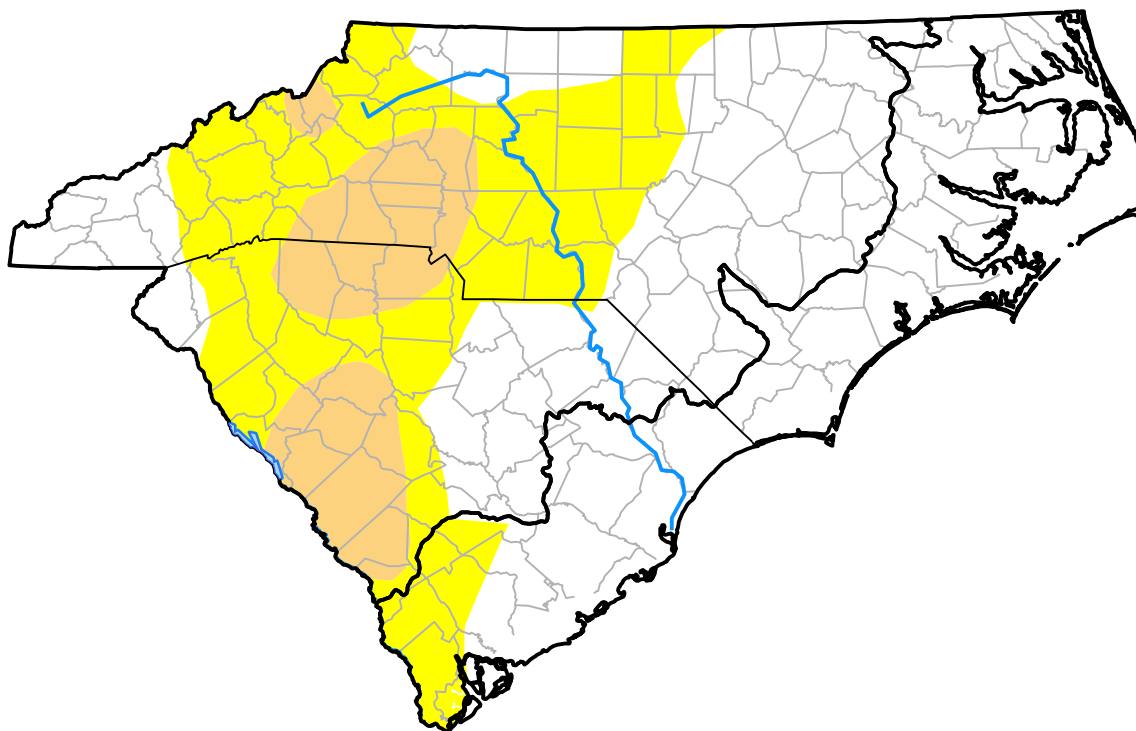


U.S. Drought Monitor

Coastal Carolinas RDEWS

October 5, 2010
 (Released Thursday, Oct. 7, 2010)
 Valid 8 a.m. EDT



Drought Conditions (Percent Area)

	None	D0-D4	D1-D4	D2-D4	D3-D4	D4
Current	91.07	8.93	0.00	0.00	0.00	0.00
Last Week <i>09-30-2010</i>	38.74	61.26	0.54	0.00	0.00	0.00
3 Months Ago <i>07-08-2010</i>	35.28	64.72	2.00	0.00	0.00	0.00
Start of Calendar Year <i>12-31-2009</i>	100.00	0.00	0.00	0.00	0.00	0.00
Start of Water Year <i>09-30-2010</i>	38.74	61.26	0.54	0.00	0.00	0.00
One Year Ago <i>10-08-2009</i>	60.32	39.68	2.83	0.00	0.00	0.00

Intensity:



The Drought Monitor focuses on broad-scale conditions. Local conditions may vary. For more information on the Drought Monitor, go to <https://droughtmonitor.unl.edu/About.aspx>

Author:

Richard Heim
 NCEI/NOAA



droughtmonitor.unl.edu