

U.S. Drought Monitor

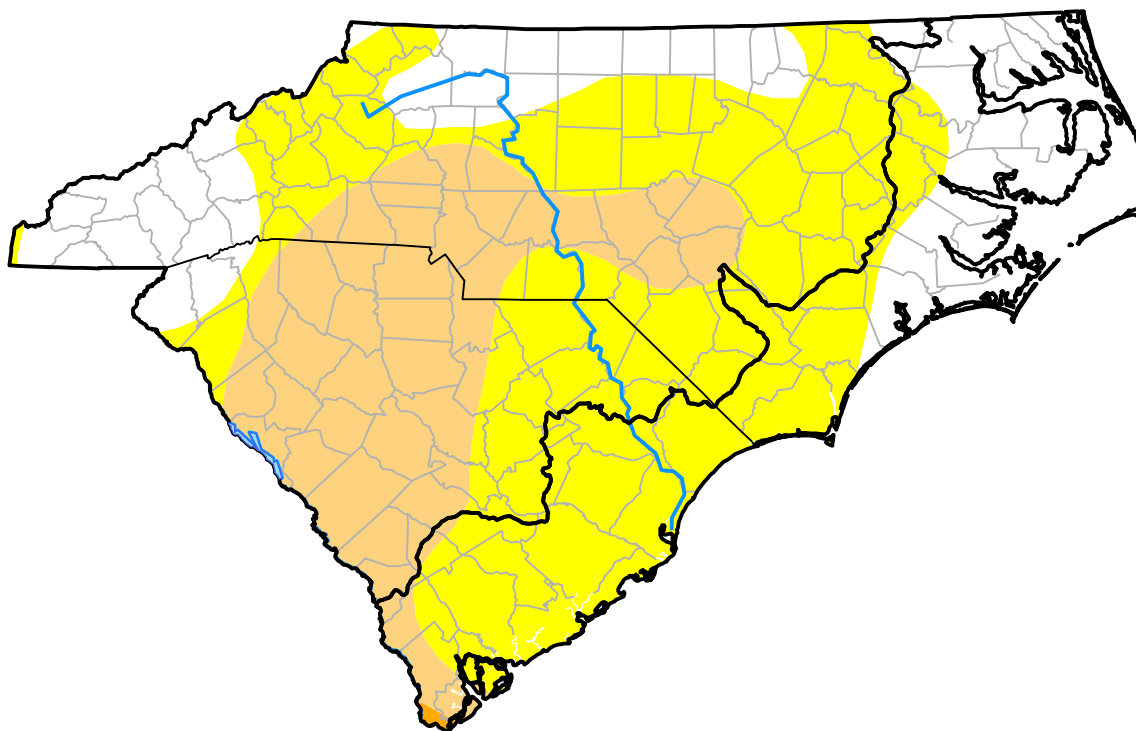
Coastal Carolinas RDEWS

December 21, 2010
 (Released Thursday, Dec. 23, 2010)

Valid 7 a.m. EST

Drought Conditions (Percent Area)

	None	D0-D4	D1-D4	D2-D4	D3-D4	D4
Current	43.81	56.19	4.45	0.62	0.00	0.00
Last Week <i>12-16-2010</i>	42.65	57.35	4.45	0.62	0.00	0.00
3 Months Ago <i>09-23-2010</i>	27.20	72.80	38.47	0.51	0.00	0.00
Start of Calendar Year <i>12-31-2009</i>	100.00	0.00	0.00	0.00	0.00	0.00
Start of Water Year <i>09-30-2010</i>	38.74	61.26	0.54	0.00	0.00	0.00
One Year Ago <i>12-24-2009</i>	100.00	0.00	0.00	0.00	0.00	0.00



Intensity:



The Drought Monitor focuses on broad-scale conditions. Local conditions may vary. For more information on the Drought Monitor, go to <https://droughtmonitor.unl.edu/About.aspx>

Author:

David Miskus
 NOAA/NWS/NCEP/CPC



droughtmonitor.unl.edu