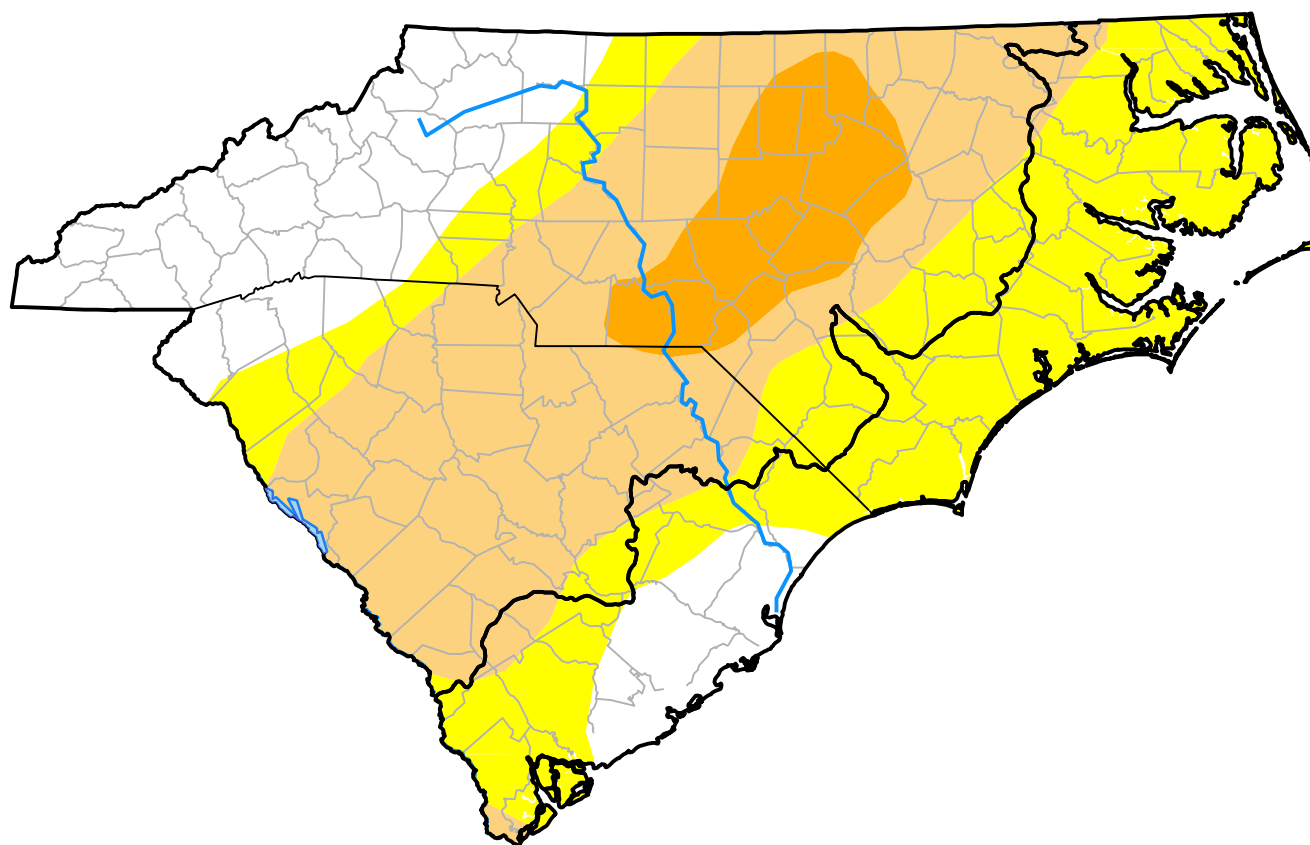


Carolinas RDEWS and Surrounding Areas

(Released Thursday, Mar. 17, 2011)

10:00 a.m. EDT



Intensity:



The Drought Monitor focuses on broad-scale conditions. Local conditions may vary. For more information on the Drought Monitor, go to <https://droughtmonitor.unl.edu/About.aspx>

Author:

Laura Edwards
Western Regional Climate Center

