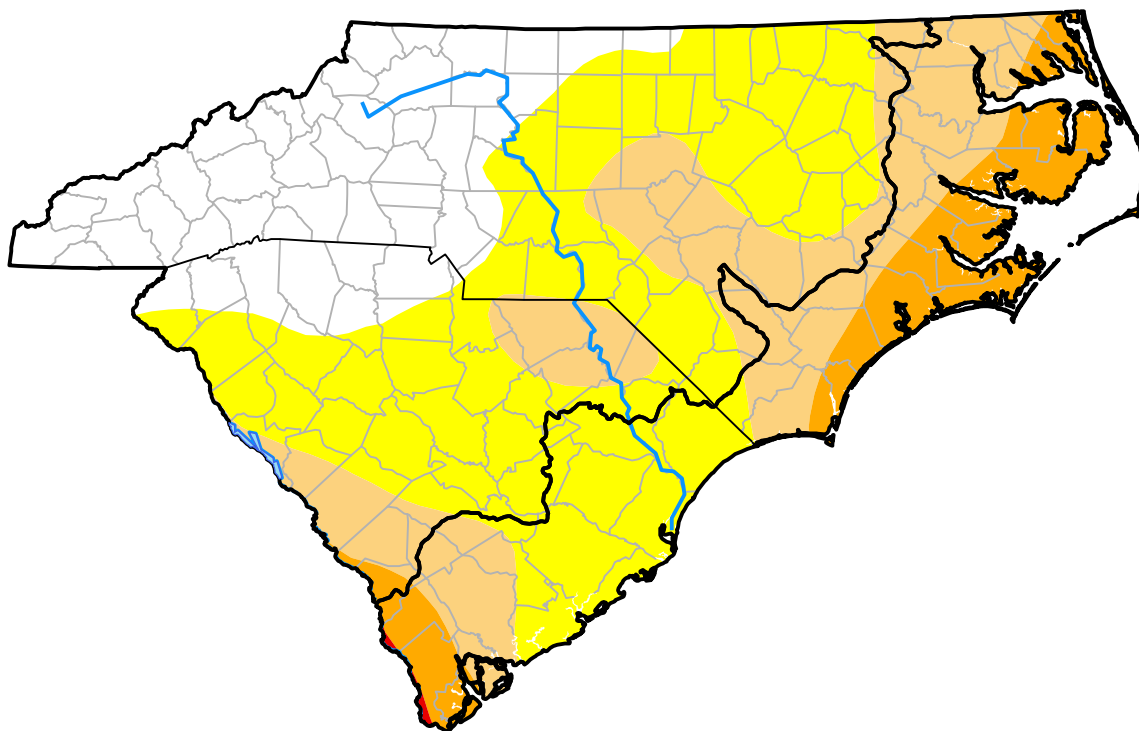


U.S. Drought Monitor

Coastal Carolinas RDEWS

May 31, 2011
 (Released Thursday, Jun. 2, 2011)
 Valid 8 a.m. EDT



Drought Conditions (Percent Area)

	None	D0	D1	D2	D3	D4
Current	0.00	27.21	34.04	38.38	0.37	0.00
Last Week <i>05-26-2011</i>	0.00	28.87	65.61	5.53	0.00	0.00
3 Months Ago <i>03-03-2011</i>	72.45	24.63	2.92	0.00	0.00	0.00
Start of Calendar Year <i>01-06-2011</i>	57.54	37.69	4.77	0.00	0.00	0.00
Start of Water Year <i>09-30-2010</i>	38.74	60.71	0.54	0.00	0.00	0.00
One Year Ago <i>06-03-2010</i>	78.33	21.67	0.00	0.00	0.00	0.00

Intensity:



The Drought Monitor focuses on broad-scale conditions. Local conditions may vary. For more information on the Drought Monitor, go to <https://droughtmonitor.unl.edu/About.aspx>

Author:

Anthony Artusa
 NOAA/NWS/NCEP/CPC

