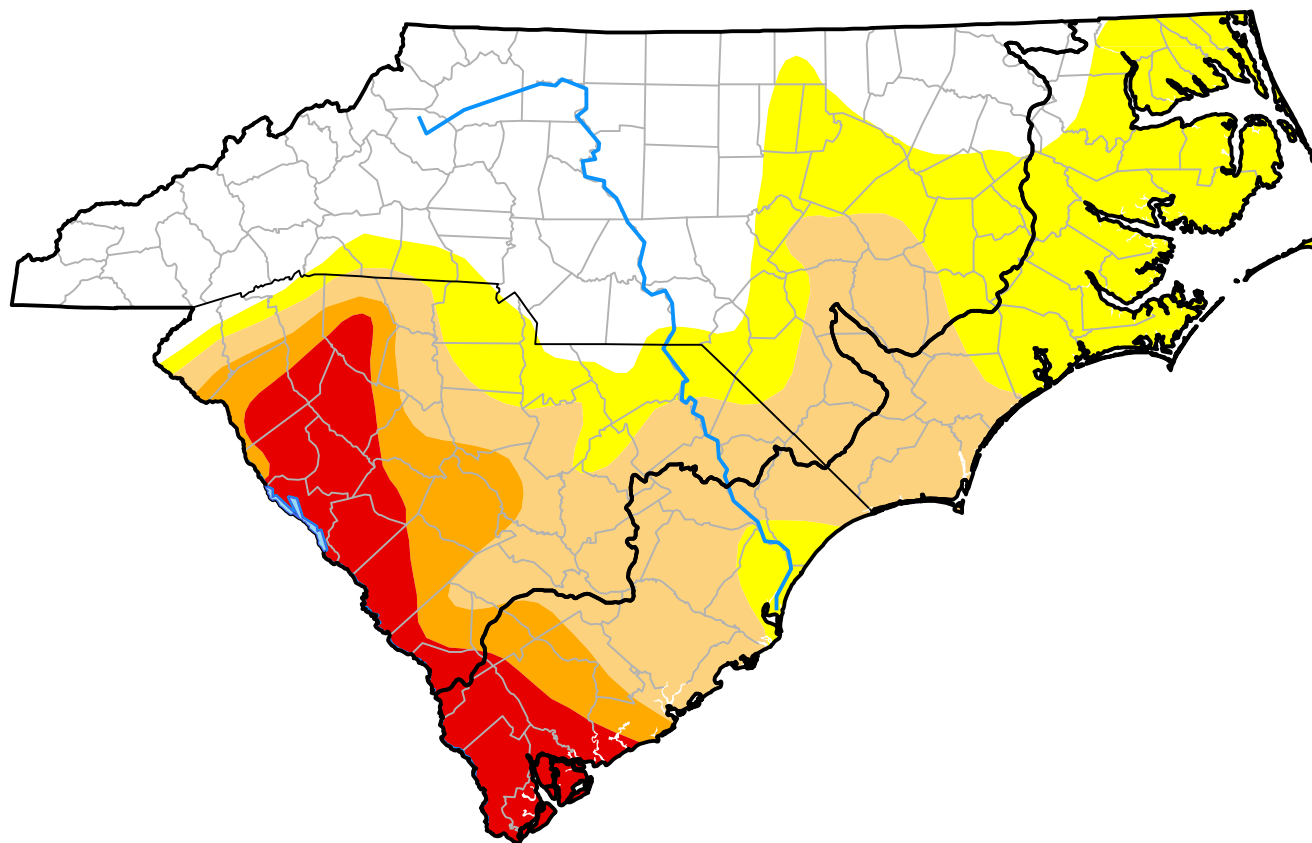


U.S. Drought Monitor

Coastal Carolinas RDEWS

December 27, 2011
(Released Thursday, Dec. 29, 2011)
Valid 7 a.m. EST



Intensity:



The Drought Monitor focuses on broad-scale conditions. Local conditions may vary. For more information on the Drought Monitor, go to <https://droughtmonitor.unl.edu/About.aspx>

Author:

Brad Rippey
U.S. Department of Agriculture



droughtmonitor.unl.edu