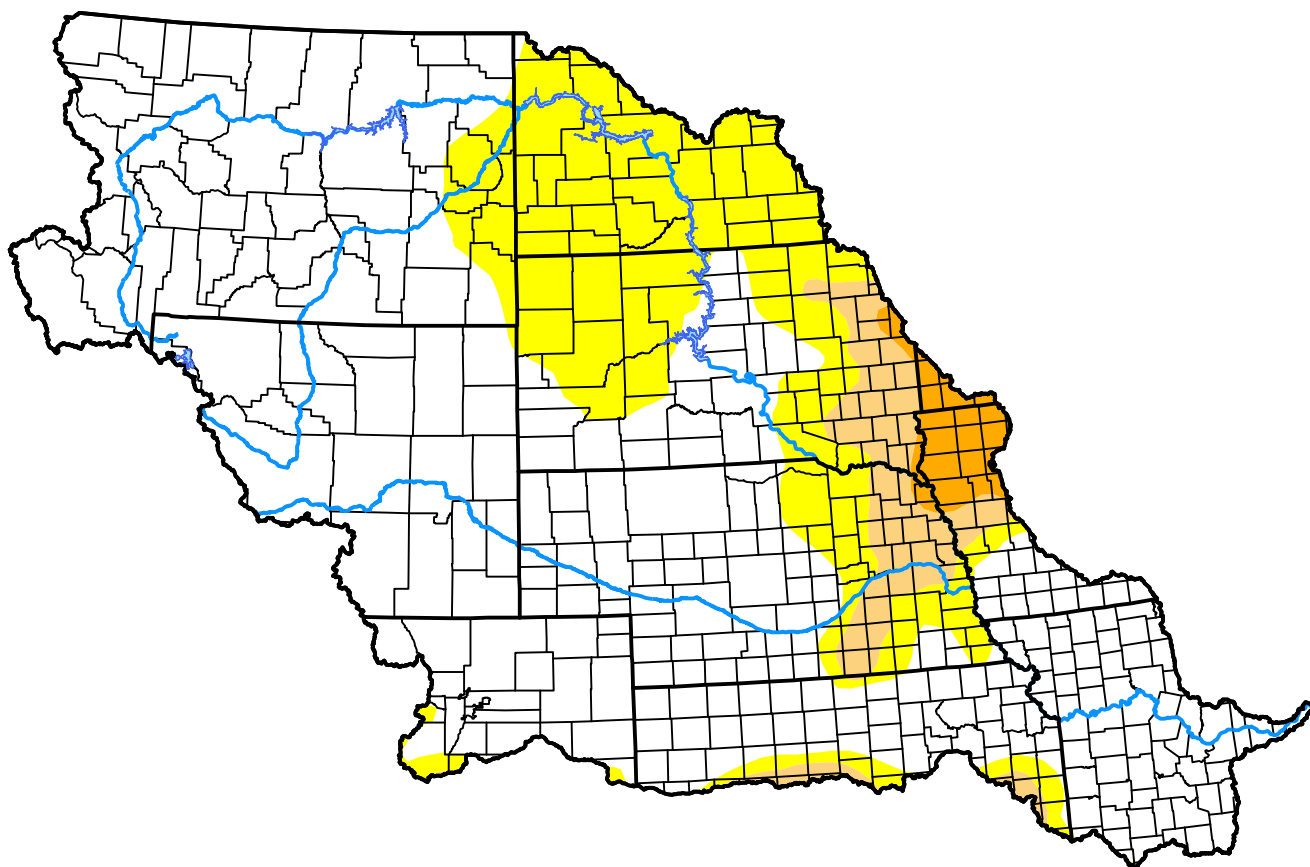


# U.S. Drought Monitor Missouri Watershed

January 10, 2012  
(Released Thursday, Jan. 12, 2012)  
Valid 7 a.m. EST



## Intensity:

-  None
-  D0 Abnormally Dry
-  D1 Moderate Drought
-  D2 Severe Drought
-  D3 Extreme Drought
-  D4 Exceptional Drought

*The Drought Monitor focuses on broad-scale conditions. Local conditions may vary. For more information on the Drought Monitor, go to <https://droughtmonitor.unl.edu/About.aspx>*

## Author:

Laura Edwards  
Western Regional Climate Center



[droughtmonitor.unl.edu](https://droughtmonitor.unl.edu)