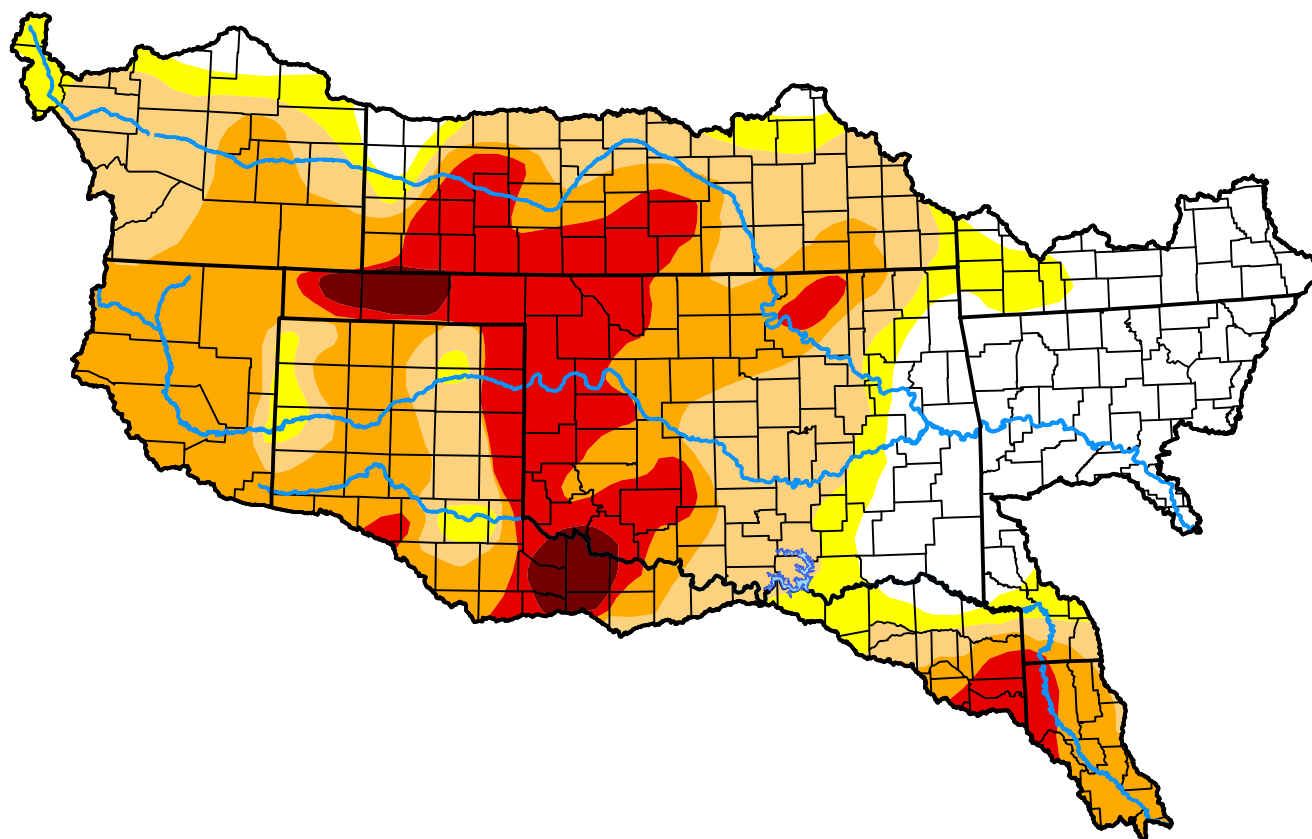


Arkansas-White-Red Watershed

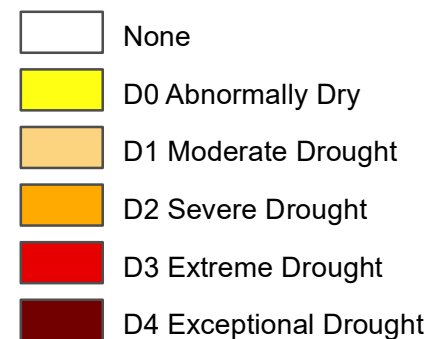
January 10, 2012

(Released Thursday, Jan. 12, 2012)

Valid 7 a.m. EST



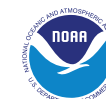
Intensity:



The Drought Monitor focuses on broad-scale conditions. Local conditions may vary. For more information on the Drought Monitor, go to <https://droughtmonitor.unl.edu/About.aspx>

Author:

Laura Edwards
Western Regional Climate Center



droughtmonitor.unl.edu