

# U.S. Drought Monitor

## Pacific Northwest Watershed

January 10, 2012

(Released Thursday, Jan. 12, 2012)

Valid 7 a.m. EST

### Drought Conditions (Percent Area)

	None	D0-D4	D1-D4	D2-D4	D3-D4	D4
<b>Current</b>	50.60	49.40	13.35	0.00	0.00	0.00
<b>Last Week</b> <i>01-05-2012</i>	53.75	46.25	7.06	0.00	0.00	0.00
<b>3 Months Ago</b> <i>10-13-2011</i>	98.94	1.06	0.00	0.00	0.00	0.00
<b>Start of Calendar Year</b> <i>01-05-2012</i>	53.75	46.25	7.06	0.00	0.00	0.00
<b>Start of Water Year</b> <i>09-29-2011</i>	89.09	10.91	0.00	0.00	0.00	0.00
<b>One Year Ago</b> <i>01-13-2011</i>	99.99	0.01	0.00	0.00	0.00	0.00

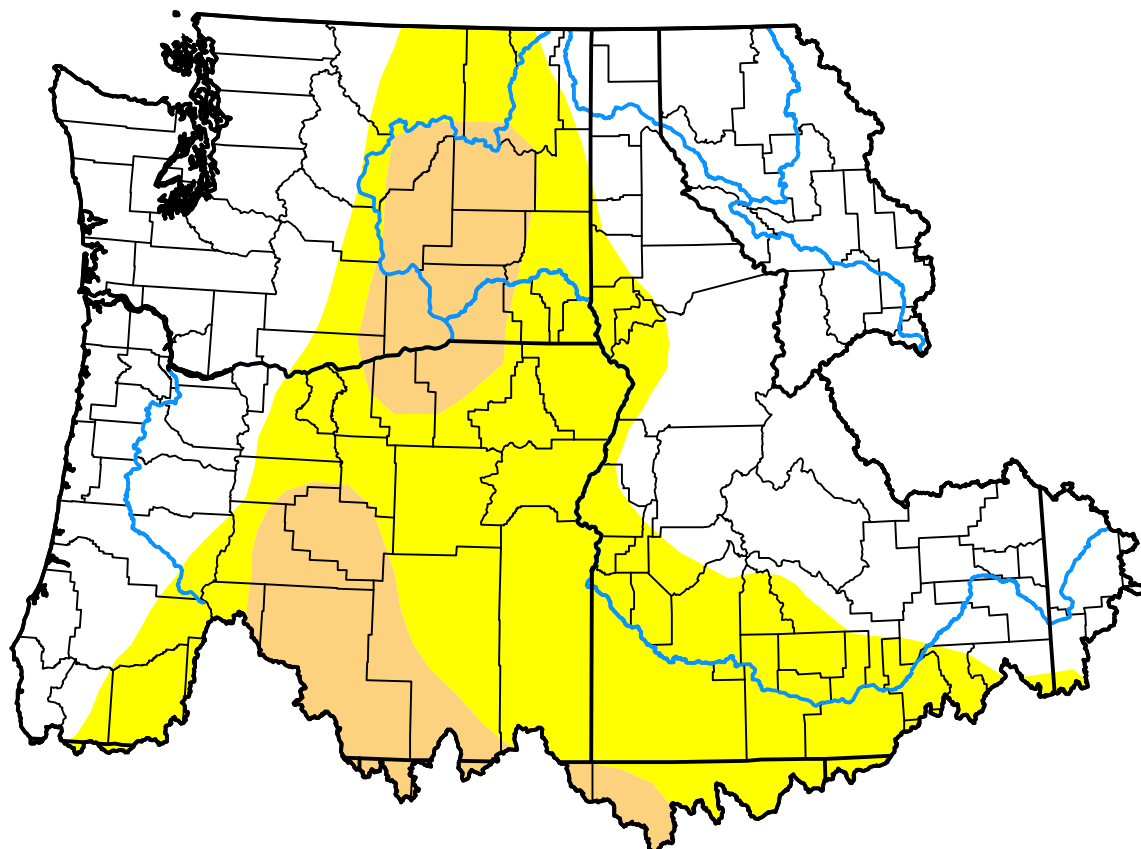
### Intensity:

 None	 D2 Severe Drought
 D0 Abnormally Dry	 D3 Extreme Drought
 D1 Moderate Drought	 D4 Exceptional Drought

The Drought Monitor focuses on broad-scale conditions. Local conditions may vary. For more information on the Drought Monitor, go to <https://droughtmonitor.unl.edu/About.aspx>

### Author:

Laura Edwards  
Western Regional Climate Center



[droughtmonitor.unl.edu](https://droughtmonitor.unl.edu)