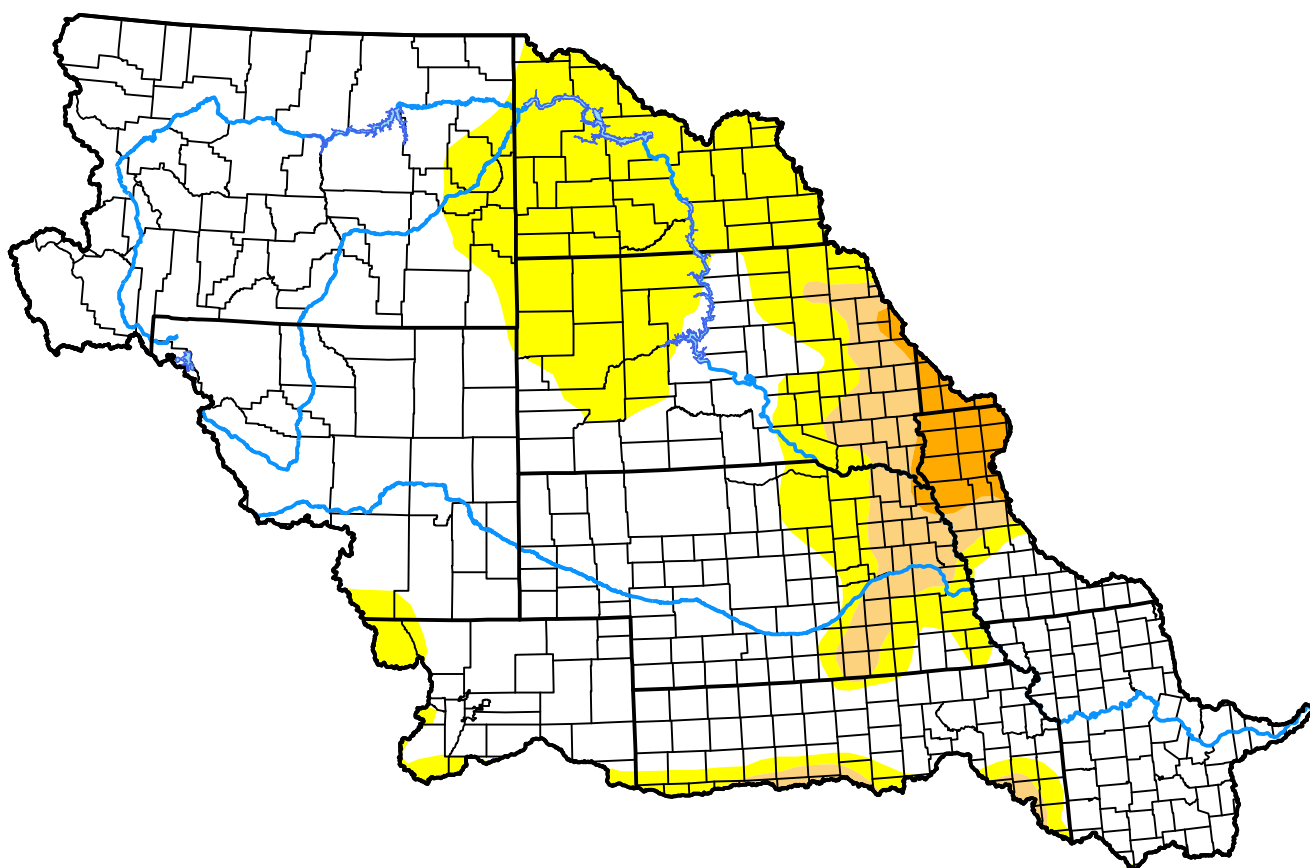
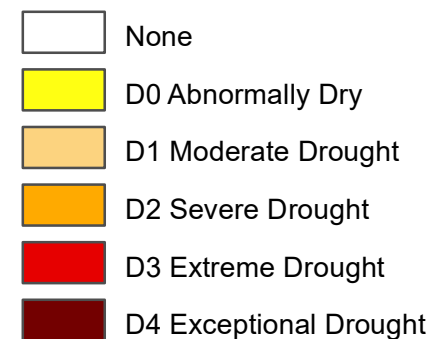


U.S. Drought Monitor Missouri Watershed

January 17, 2012
(Released Thursday, Jan. 19, 2012)
Valid 7 a.m. EST



Intensity:



The Drought Monitor focuses on broad-scale conditions. Local conditions may vary. For more information on the Drought Monitor, go to <https://droughtmonitor.unl.edu/About.aspx>

Author:

Laura Edwards
Western Regional Climate Center



droughtmonitor.unl.edu