

U.S. Drought Monitor

Pacific Northwest Watershed

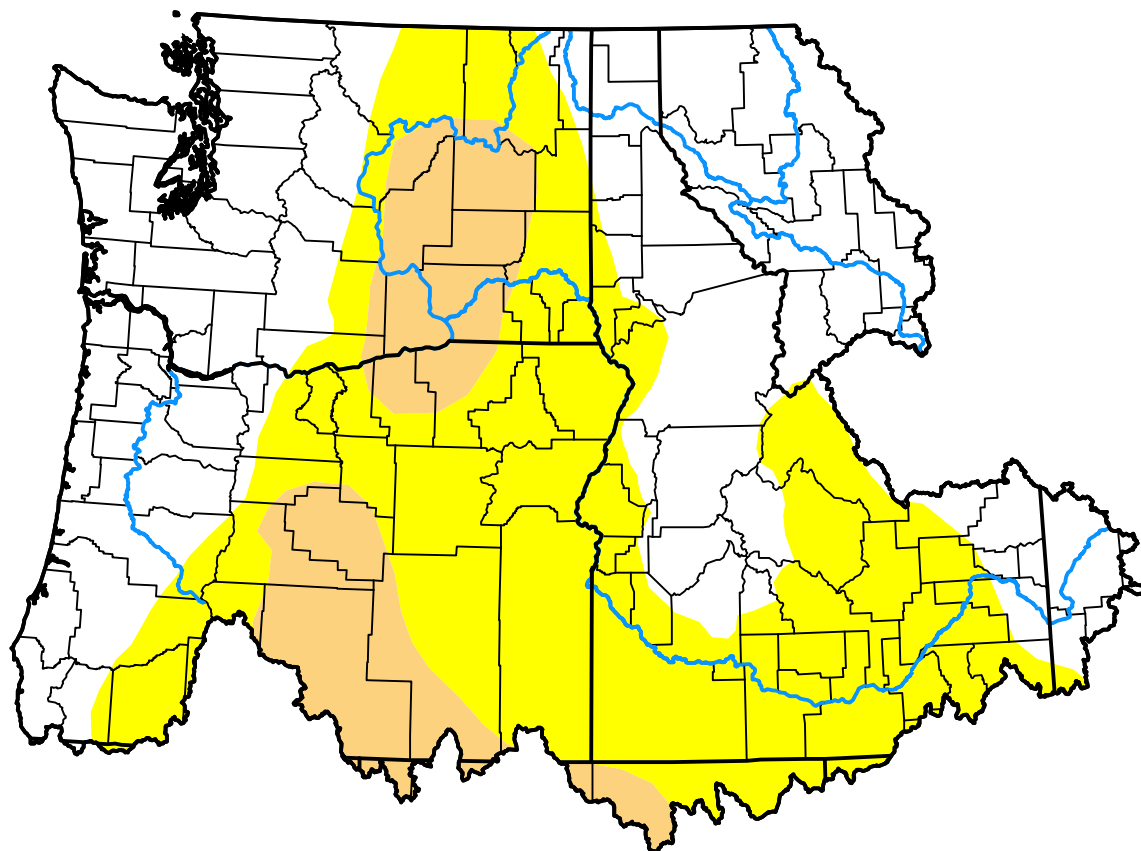
January 24, 2012

(Released Thursday, Jan. 26, 2012)

Valid 7 a.m. EST

Drought Conditions (Percent Area)

	None	D0-D4	D1-D4	D2-D4	D3-D4	D4
Current	46.21	53.79	12.96	0.00	0.00	0.00
Last Week 01-19-2012	38.64	61.36	13.35	0.00	0.00	0.00
3 Months Ago 10-27-2011	98.40	1.60	0.00	0.00	0.00	0.00
Start of Calendar Year 01-05-2012	53.75	46.25	7.06	0.00	0.00	0.00
Start of Water Year 09-29-2011	89.09	10.91	0.00	0.00	0.00	0.00
One Year Ago 01-27-2011	99.99	0.01	0.00	0.00	0.00	0.00



Intensity:

 None	 D2 Severe Drought
 D0 Abnormally Dry	 D3 Extreme Drought
 D1 Moderate Drought	 D4 Exceptional Drought

The Drought Monitor focuses on broad-scale conditions. Local conditions may vary. For more information on the Drought Monitor, go to <https://droughtmonitor.unl.edu/About.aspx>

Author:

Eric Luebehusen
U.S. Department of Agriculture



droughtmonitor.unl.edu