

# U.S. Drought Monitor

# Arkansas-White-Red Watershed

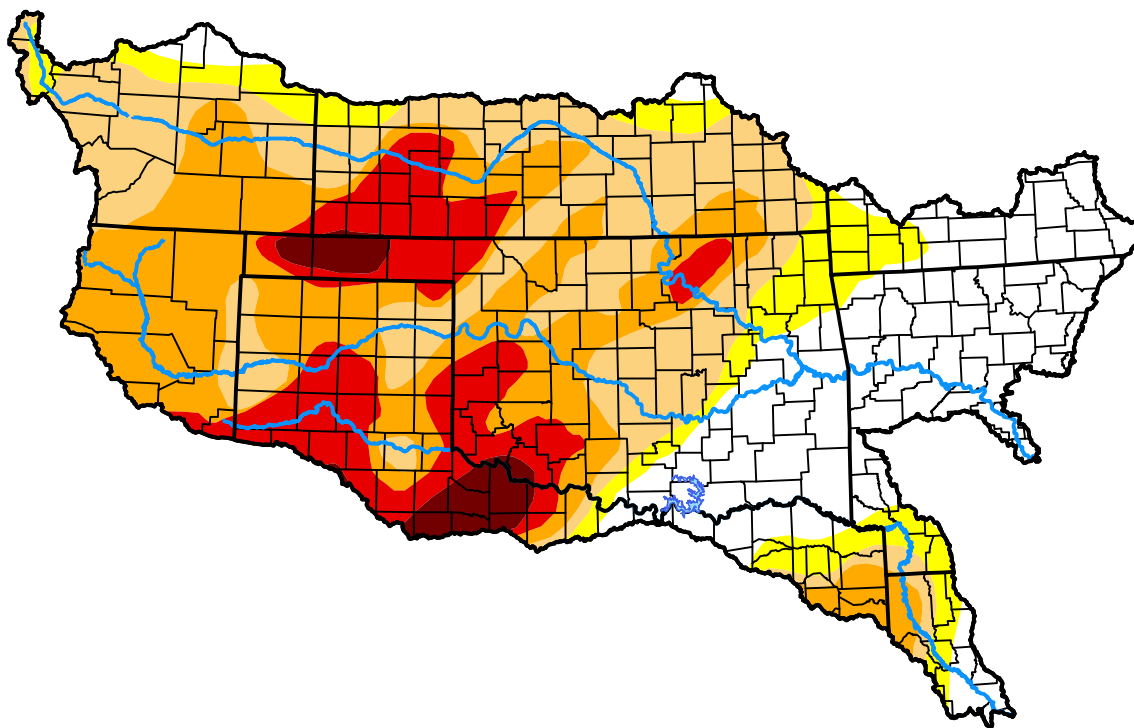
March 6, 2012

(Released Thursday, Mar. 8, 2012)

Valid 7 a.m. EST

### Drought Conditions (Percent Area)

	None	D0	D1	D2	D3	D4
<b>Current</b>	24.26	9.83	25.12	25.43	12.60	2.76
<b>Last Week</b> <i>03-01-2012</i>	24.27	11.94	24.91	27.00	9.70	2.19
<b>3 Months Ago</b> <i>12-08-2011</i>	18.39	7.41	19.03	26.25	26.27	2.65
<b>Start of Calendar Year</b> <i>01-05-2012</i>	19.64	8.60	26.65	28.68	13.68	2.75
<b>Start of Water Year</b> <i>09-29-2011</i>	3.15	3.45	9.11	24.87	17.66	41.76
<b>One Year Ago</b> <i>03-10-2011</i>	9.01	22.54	39.26	25.85	3.33	0.00



### Intensity:



The Drought Monitor focuses on broad-scale conditions. Local conditions may vary. For more information on the Drought Monitor, go to <https://droughtmonitor.unl.edu/About.aspx>

### Author:

Michael Brewer  
NCEI/NOAA



[droughtmonitor.unl.edu](https://droughtmonitor.unl.edu)