

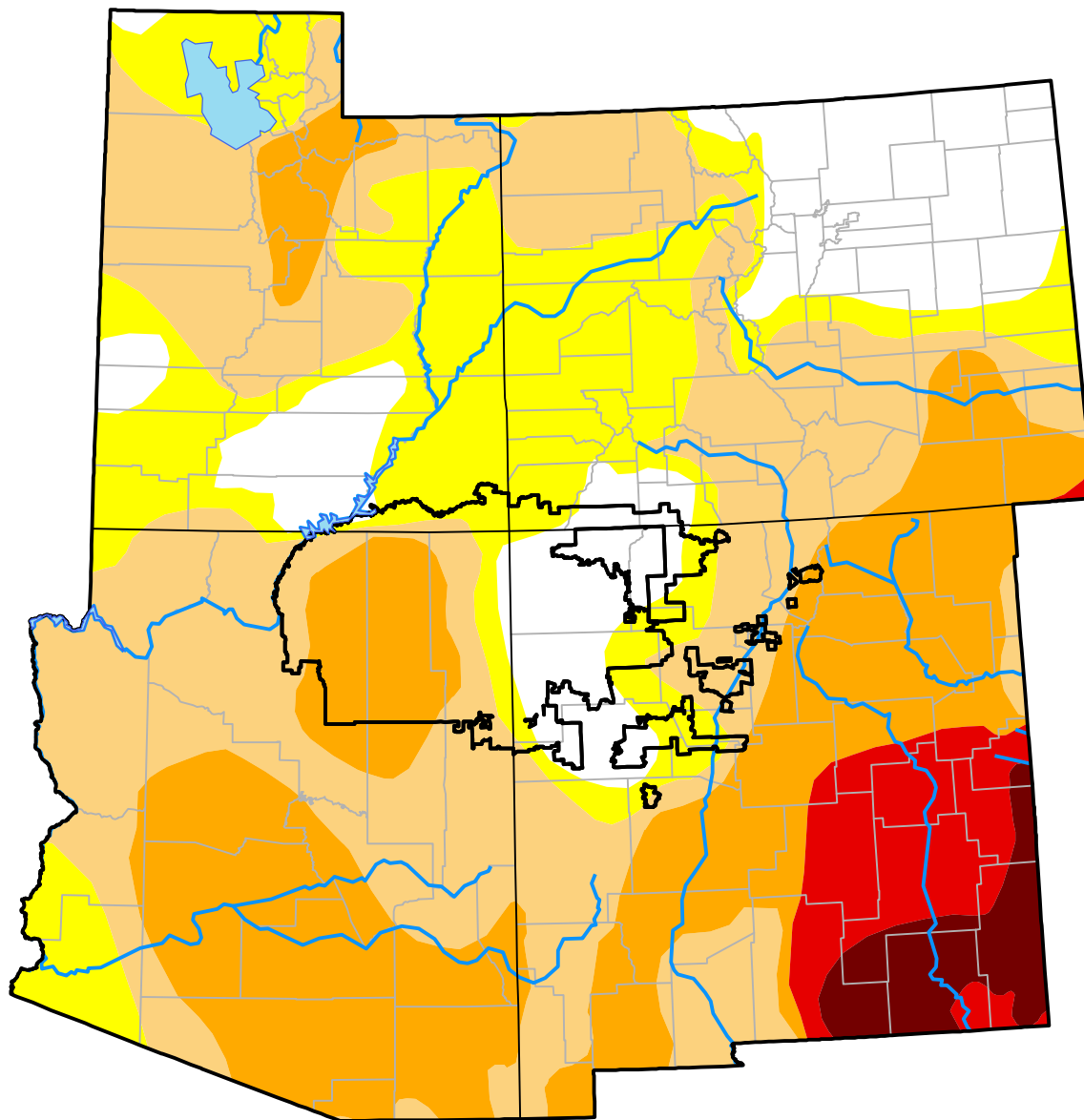
Corners RDEWS and Surrounding Areas

(Released Thursday, Mar. 8, 2012)

Valid 7 a.m. EST

Drought Conditions (Percent Area)

	None	D0	D1	D2	D3	D4
Current	13.22	20.45	33.83	25.31	4.58	2.61
Last Week <i>03-01-2012</i>	13.40	20.40	35.79	23.26	4.82	2.33
3 Months Ago <i>12-08-2011</i>	37.82	11.54	9.94	15.52	19.78	5.41
Start of Calendar Year <i>01-05-2012</i>	40.72	11.80	14.41	25.62	5.28	2.17
Start of Water Year <i>09-29-2011</i>	33.45	13.36	11.31	15.89	15.34	10.64
One Year Ago <i>03-10-2011</i>	40.16	18.18	20.10	20.01	1.55	0.00



Intensity:

- None
- D0 Abnormally Dry
- D1 Moderate Drought
- D2 Severe Drought
- D3 Extreme Drought
- D4 Exceptional Drought

The Drought Monitor focuses on broad-scale conditions. Local conditions may vary. For more information on the Drought Monitor, go to <https://droughtmonitor.unl.edu/About.aspx>

Author:

Michael Brewer
NCEI/NOAA

