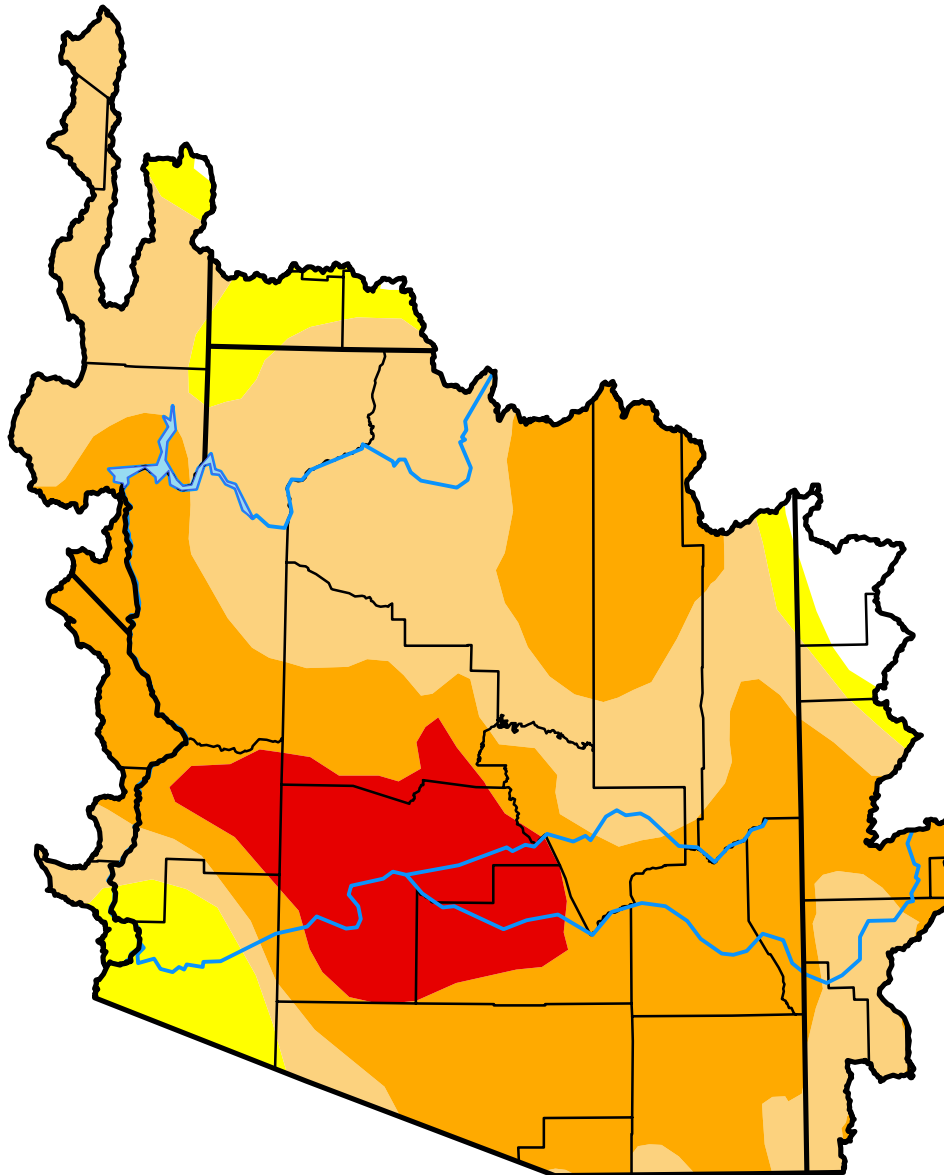







U.S. Drought Monitor

Lower Colorado Watershed

March 27, 2012
(Released Thursday, Mar. 29, 2012)
Valid 8 a.m. EDT



Intensity:

-  D0 Abnormally Dry
-  D1 Moderate Drought
-  D2 Severe Drought
-  D3 Extreme Drought
-  D4 Exceptional Drought

The Drought Monitor focuses on broad-scale conditions. Local conditions may vary. See accompanying text summary for forecast statements.

Author:

Eric Luebehusen
U.S. Department of Agriculture



<http://droughtmonitor.unl.edu/>