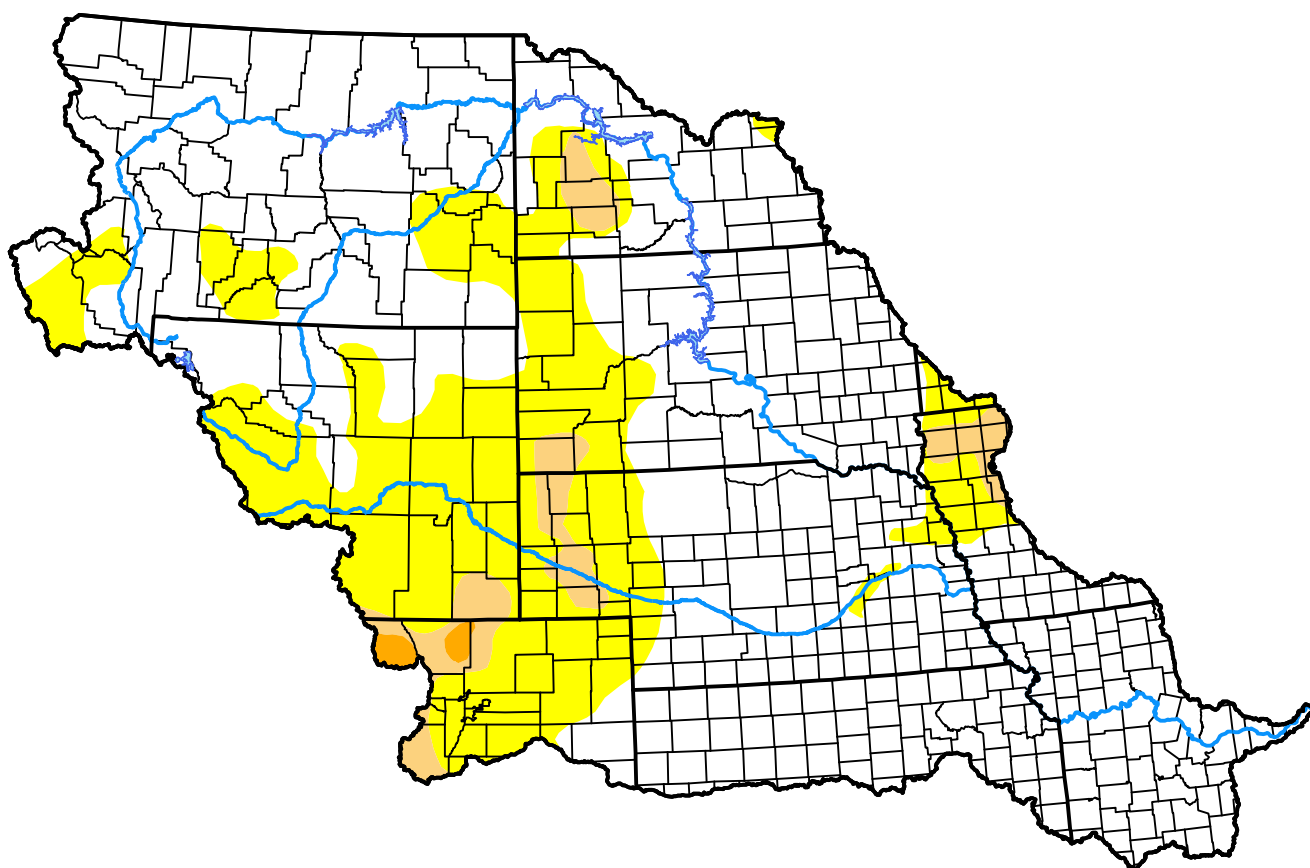
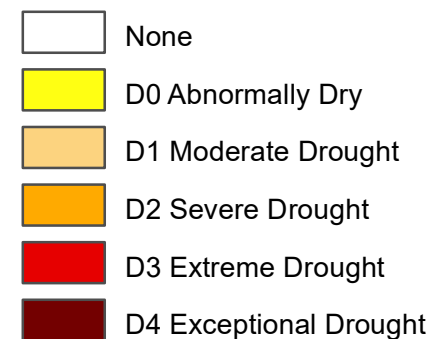


U.S. Drought Monitor Missouri Watershed

May 8, 2012
(Released Thursday, May. 10, 2012)
Valid 8 a.m. EDT



Intensity:



The Drought Monitor focuses on broad-scale conditions. Local conditions may vary. For more information on the Drought Monitor, go to <https://droughtmonitor.unl.edu/About.aspx>

Author:

Matthew Rosencrans
CPC/NCEP/NWS/NOAA



droughtmonitor.unl.edu