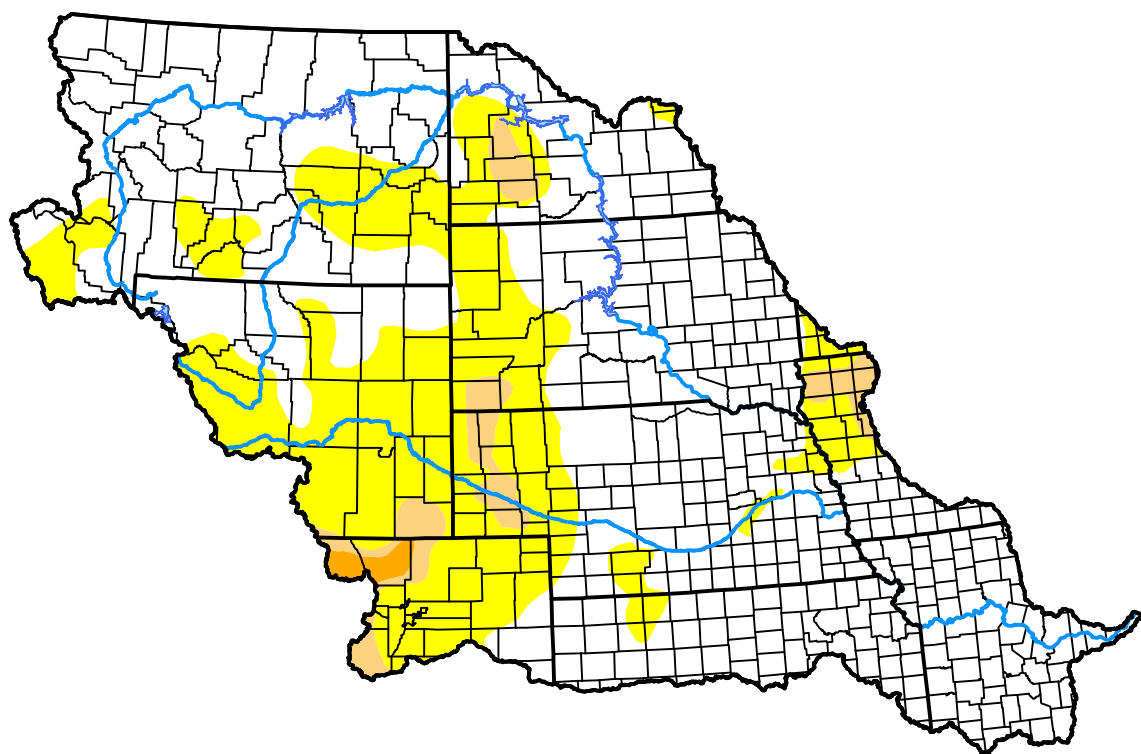


U.S. Drought Monitor Missouri Watershed

May 15, 2012
(Released Thursday, May. 17, 2012)
Valid 8 a.m. EDT



Drought Conditions (Percent Area)

	None	D0-D4	D1-D4	D2-D4	D3-D4	D4
Current	68.18	31.82	4.15	0.53	0.00	0.00
Last Week <i>05-10-2012</i>	70.58	29.42	4.15	0.37	0.00	0.00
3 Months Ago <i>02-16-2012</i>	69.71	30.29	6.46	2.39	0.00	0.00
Start of Calendar Year <i>01-05-2012</i>	74.38	25.62	6.51	1.98	0.00	0.00
Start of Water Year <i>09-29-2011</i>	71.78	28.22	4.58	0.25	0.01	0.00
One Year Ago <i>05-19-2011</i>	86.46	13.54	8.30	2.61	0.00	0.00

Intensity:

None	D2 Severe Drought
D0 Abnormally Dry	D3 Extreme Drought
D1 Moderate Drought	D4 Exceptional Drought

The Drought Monitor focuses on broad-scale conditions. Local conditions may vary. For more information on the Drought Monitor, go to <https://droughtmonitor.unl.edu/About.aspx>

Author:

Brad Rippey
U.S. Department of Agriculture



droughtmonitor.unl.edu