

# U.S. Drought Monitor

## Missouri River Basin RDEWS

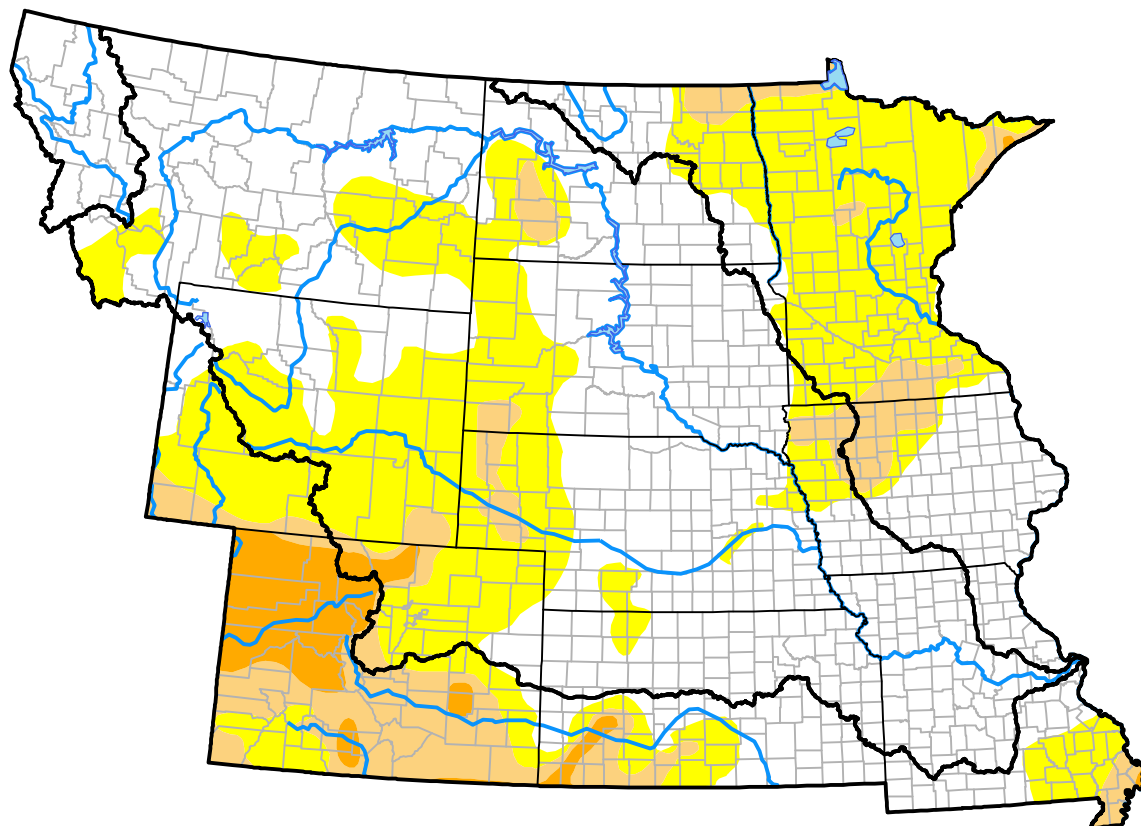
May 15, 2012

(Released Thursday, May. 17, 2012)

Valid 8 a.m. EDT

Drought Conditions (Percent Area)

|   | None  | D0    | D1   | D2   | D3   | D4   |
|---|-------|-------|------|------|------|------|
| <b>Current</b>                              | 68.23 | 27.63 | 3.61 | 0.53 | 0.00 | 0.00 |
| <b>Last Week</b><br>05-10-2012              | 70.63 | 25.23 | 3.77 | 0.37 | 0.00 | 0.00 |
| <b>3 Months Ago</b><br>02-16-2012           | 69.77 | 23.79 | 4.07 | 2.38 | 0.00 | 0.00 |
| <b>Start of Calendar Year</b><br>01-05-2012 | 74.43 | 19.07 | 4.52 | 1.97 | 0.00 | 0.00 |
| <b>Start of Water Year</b><br>09-29-2011    | 71.66 | 23.74 | 4.34 | 0.24 | 0.01 | 0.00 |
| <b>One Year Ago</b><br>05-19-2011           | 86.47 | 5.23  | 5.67 | 2.62 | 0.00 | 0.00 |



### Intensity:

|   |  |
|---|--|
|  None                  |  D2 Severe Drought        |
|  D0 Abnormally Dry    |  D3 Extreme Drought      |
|  D1 Moderate Drought |  D4 Exceptional Drought |

The Drought Monitor focuses on broad-scale conditions. Local conditions may vary. For more information on the Drought Monitor, go to <https://droughtmonitor.unl.edu/About.aspx>

### Author:

Brad Rippey  
U.S. Department of Agriculture



[droughtmonitor.unl.edu](https://droughtmonitor.unl.edu)