

U.S. Drought Monitor

Missouri River Basin RDEWS

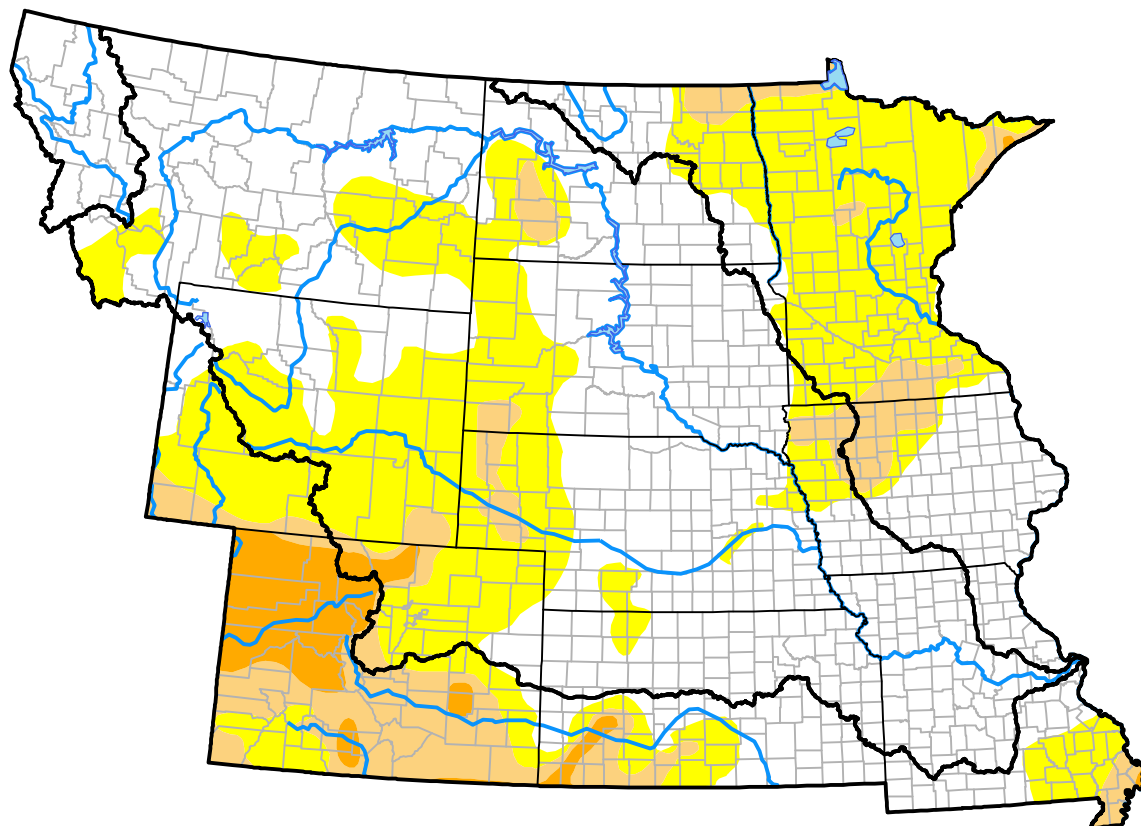
May 15, 2012

(Released Thursday, May. 17, 2012)

Valid 8 a.m. EDT

Drought Conditions (Percent Area)

	None	D0-D4	D1-D4	D2-D4	D3-D4	D4
Current	68.23	31.77	4.14	0.53	0.00	0.00
Last Week 05-10-2012	70.63	29.37	4.14	0.37	0.00	0.00
3 Months Ago 02-16-2012	69.77	30.23	6.45	2.38	0.00	0.00
Start of Calendar Year 01-05-2012	74.43	25.57	6.50	1.97	0.00	0.00
Start of Water Year 09-29-2011	71.66	28.34	4.59	0.25	0.01	0.00
One Year Ago 05-19-2011	86.47	13.53	8.29	2.62	0.00	0.00



Intensity:

None	D2 Severe Drought
D0 Abnormally Dry	D3 Extreme Drought
D1 Moderate Drought	D4 Exceptional Drought

The Drought Monitor focuses on broad-scale conditions. Local conditions may vary. For more information on the Drought Monitor, go to <https://droughtmonitor.unl.edu/About.aspx>

Author:

Brad Rippey
U.S. Department of Agriculture



droughtmonitor.unl.edu