

# U.S. Drought Monitor

## Pacific Northwest Watershed

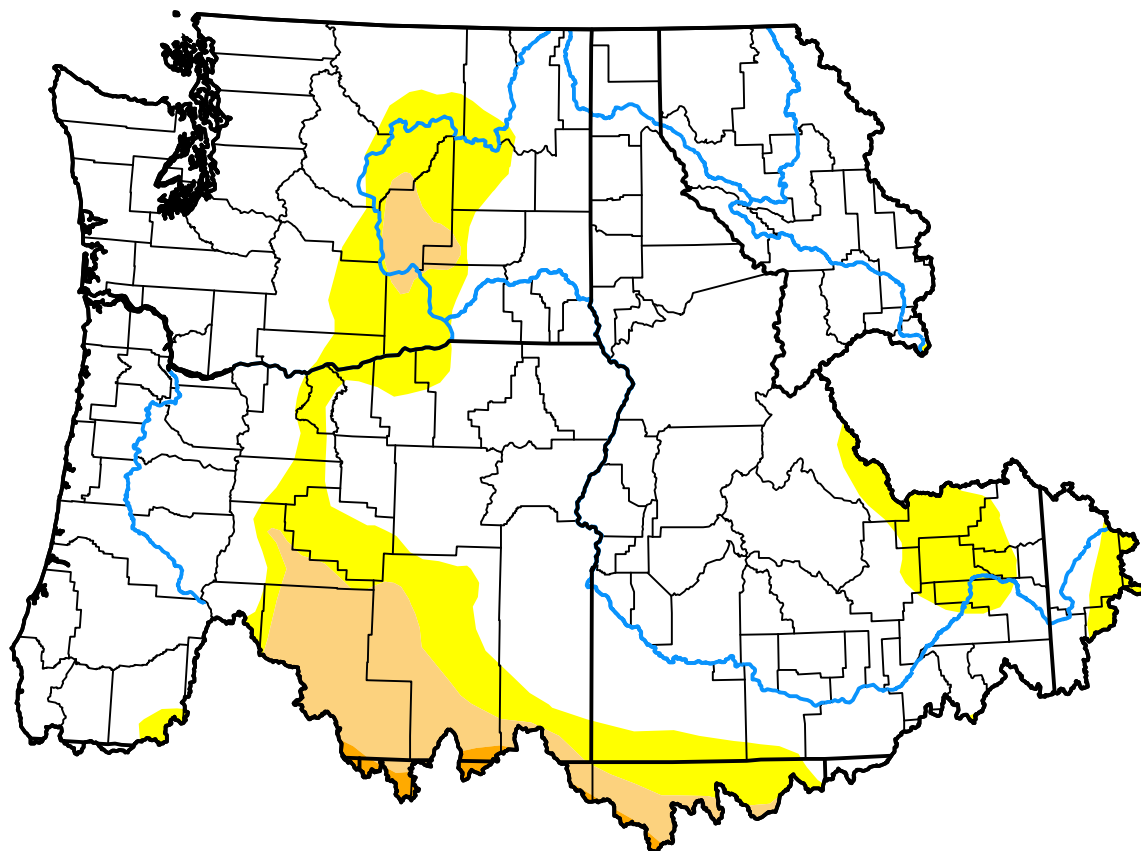
May 22, 2012

(Released Thursday, May. 24, 2012)

Valid 8 a.m. EDT

### Drought Conditions (Percent Area)

	None	D0	D1	D2	D3	D4
<b>Current</b>	79.46	13.93	6.19	0.42	0.00	0.00
<b>Last Week</b> 05-17-2012	79.70	13.64	6.24	0.42	0.00	0.00
<b>3 Months Ago</b> 02-23-2012	47.99	39.59	11.82	0.59	0.00	0.00
<b>Start of Calendar Year</b> 01-05-2012	53.75	39.19	7.06	0.00	0.00	0.00
<b>Start of Water Year</b> 09-29-2011	89.09	10.91	0.00	0.00	0.00	0.00
<b>One Year Ago</b> 05-26-2011	100.00	0.00	0.00	0.00	0.00	0.00



### Intensity:

None	D2 Severe Drought
D0 Abnormally Dry	D3 Extreme Drought
D1 Moderate Drought	D4 Exceptional Drought

The Drought Monitor focuses on broad-scale conditions. Local conditions may vary. For more information on the Drought Monitor, go to <https://droughtmonitor.unl.edu/About.aspx>

### Author:

Brad Rippey  
U.S. Department of Agriculture



[droughtmonitor.unl.edu](https://droughtmonitor.unl.edu)