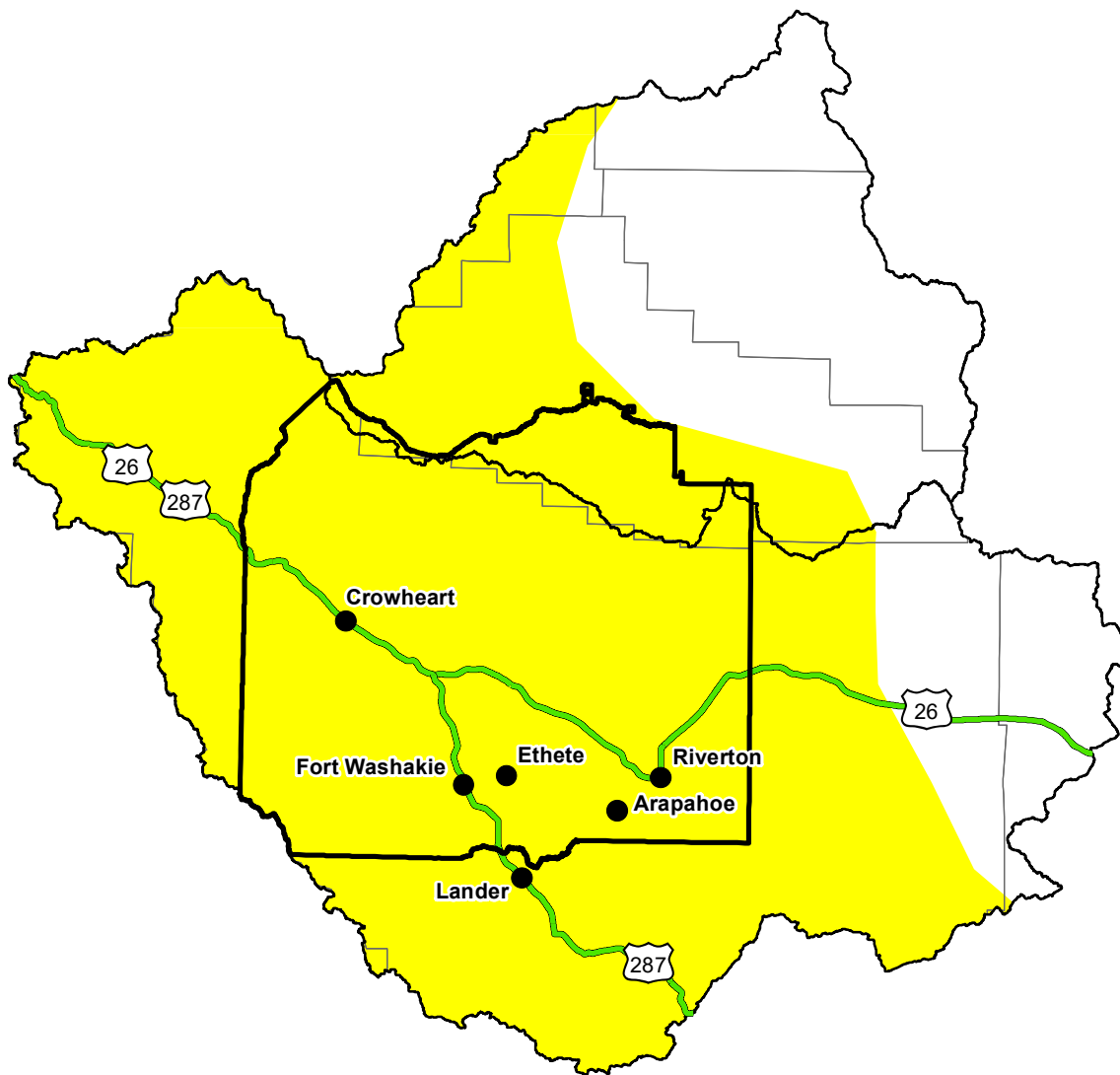


U.S. Drought Monitor

Wind River and Surrounding Area

May 22, 2012
 (Released Thursday, May. 24, 2012)
 Valid 8 a.m. EDT



Drought Conditions (Percent Area)

	None	D0-D4	D1-D4	D2-D4	D3-D4	D4
Current	0.00	0.00	0.00	0.00	0.00	0.00
Last Week <i>05-17-2012</i>	0.00	0.00	0.00	0.00	0.00	0.00
3 Months Ago <i>02-23-2012</i>	0.00	0.00	0.00	0.00	0.00	0.00
Start of Calendar Year <i>01-05-2012</i>	0.00	0.00	0.00	0.00	0.00	0.00
Start of Water Year <i>09-29-2011</i>	0.00	0.00	0.00	0.00	0.00	0.00
One Year Ago <i>05-26-2011</i>	0.00	0.00	0.00	0.00	0.00	0.00

Note: Statistics are for the surrounding area including the reservation.

Intensity:



The Drought Monitor focuses on broad-scale conditions. Local conditions may vary. For more information on the Drought Monitor, go to <https://droughtmonitor.unl.edu/About.aspx>

Author:

Brad Rippey
 U.S. Department of Agriculture

