

U.S. Drought Monitor

Pacific Northwest Watershed

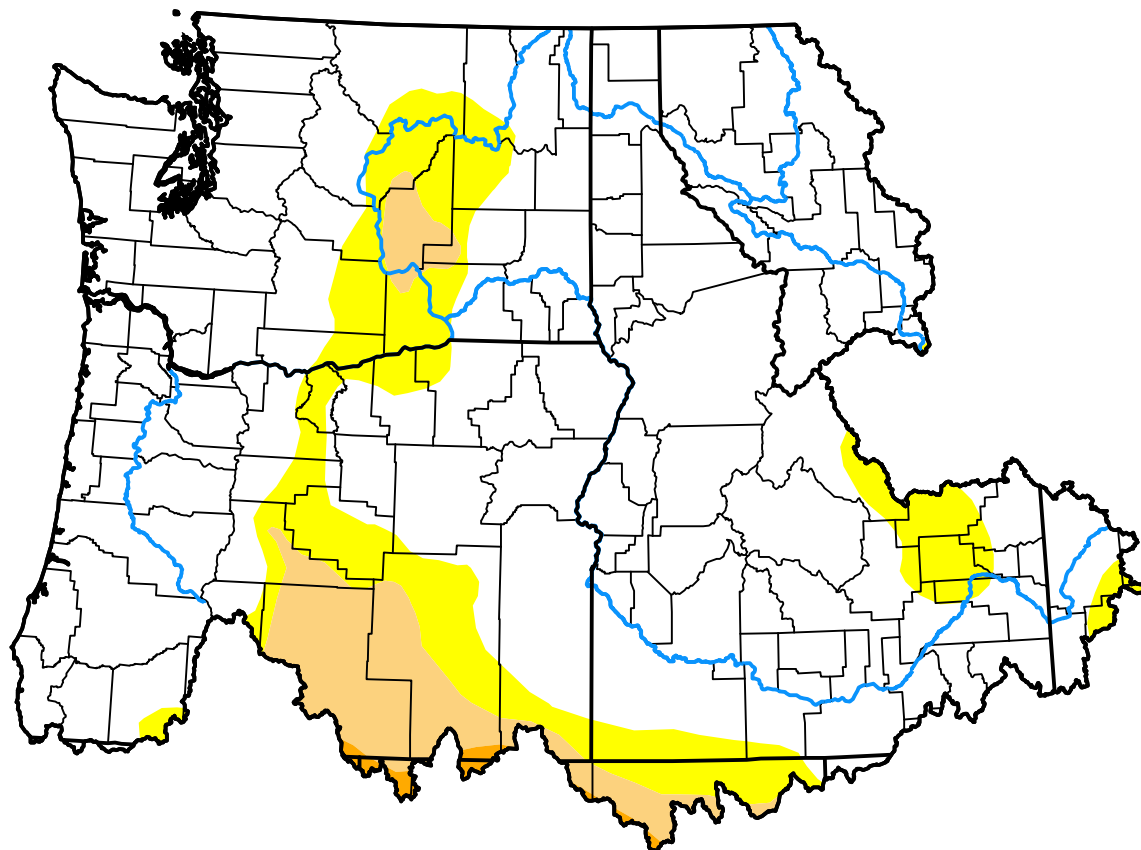
May 29, 2012

(Released Thursday, May. 31, 2012)

Valid 8 a.m. EDT

Drought Conditions (Percent Area)

	None	D0	D1	D2	D3	D4
Current	80.16	13.23	6.19	0.42	0.00	0.00
Last Week 05-24-2012	79.46	13.93	6.19	0.42	0.00	0.00
3 Months Ago 03-01-2012	47.02	37.27	14.45	1.25	0.00	0.00
Start of Calendar Year 01-05-2012	53.75	39.19	7.06	0.00	0.00	0.00
Start of Water Year 09-29-2011	89.09	10.91	0.00	0.00	0.00	0.00
One Year Ago 06-02-2011	100.00	0.00	0.00	0.00	0.00	0.00



Intensity:

None	D2 Severe Drought
D0 Abnormally Dry	D3 Extreme Drought
D1 Moderate Drought	D4 Exceptional Drought

The Drought Monitor focuses on broad-scale conditions. Local conditions may vary. For more information on the Drought Monitor, go to <https://droughtmonitor.unl.edu/About.aspx>

Author:

Brad Rippey
U.S. Department of Agriculture



droughtmonitor.unl.edu