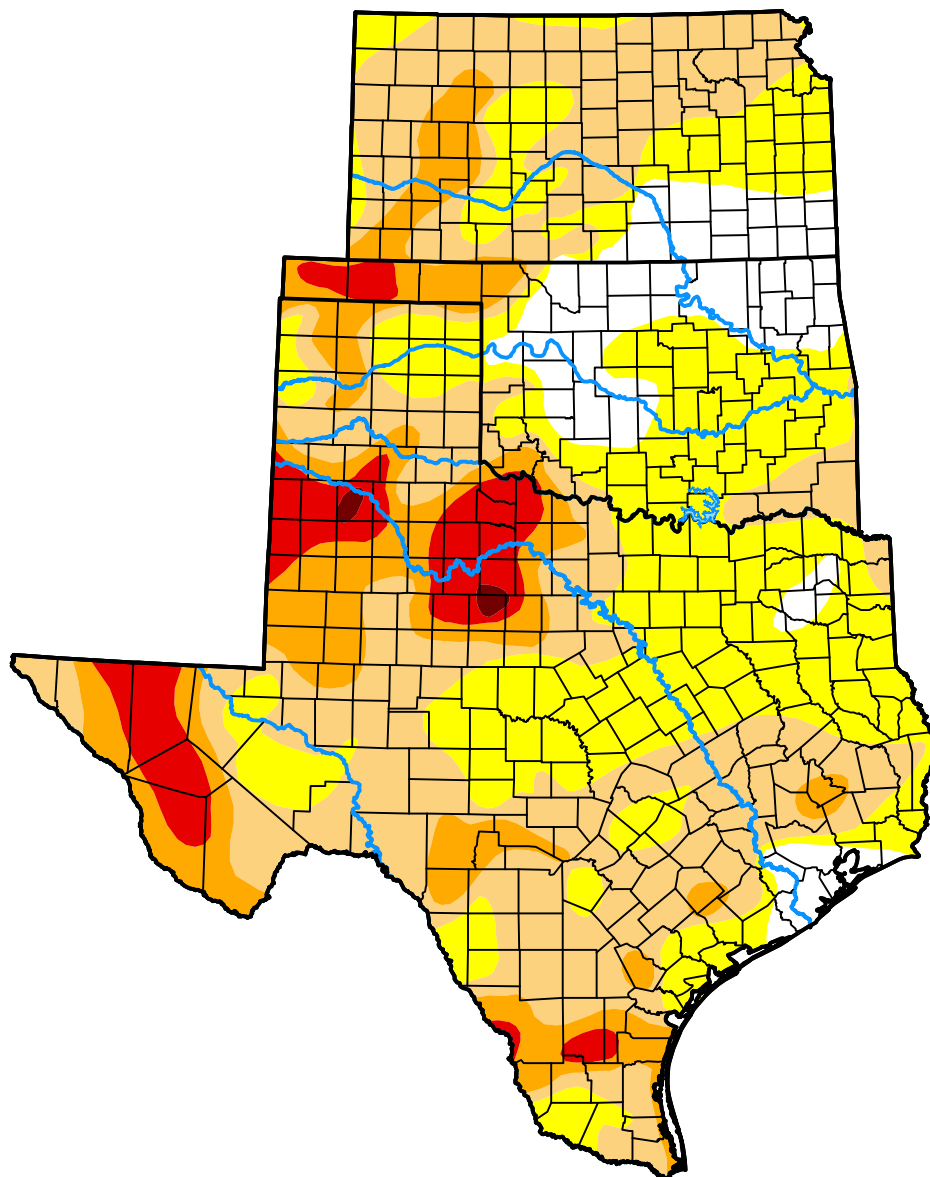


*U.S. Drought Monitor*  
**USDA Southern Plains  
Climate Hub**

**June 5, 2012**  
(Released Thursday, Jun. 7, 2012)  
Valid 8 a.m. EDT



**Intensity:**



*The Drought Monitor focuses on broad-scale conditions. Local conditions may vary. For more information on the Drought Monitor, go to <https://droughtmonitor.unl.edu/About.aspx>*

**Author:**

David Miskus  
NOAA/NWS/NCEP/CPC



**droughtmonitor.unl.edu**