

U.S. Drought Monitor

Wind River and Surrounding Area

June 5, 2012

(Released Thursday, Jun. 7, 2012)

Valid 8 a.m. EDT

Drought Conditions (Percent Area)

	None	D0-D4	D1-D4	D2-D4	D3-D4	D4
Current	0.00	0.00	0.00	0.00	0.00	0.00
Last Week 05-31-2012	0.00	0.00	0.00	0.00	0.00	0.00
3 Months Ago 03-08-2012	0.00	0.00	0.00	0.00	0.00	0.00
Start of Calendar Year 01-05-2012	0.00	0.00	0.00	0.00	0.00	0.00
Start of Water Year 09-29-2011	0.00	0.00	0.00	0.00	0.00	0.00
One Year Ago 06-09-2011	0.00	0.00	0.00	0.00	0.00	0.00

Note: Statistics are for the surrounding area including the reservation.

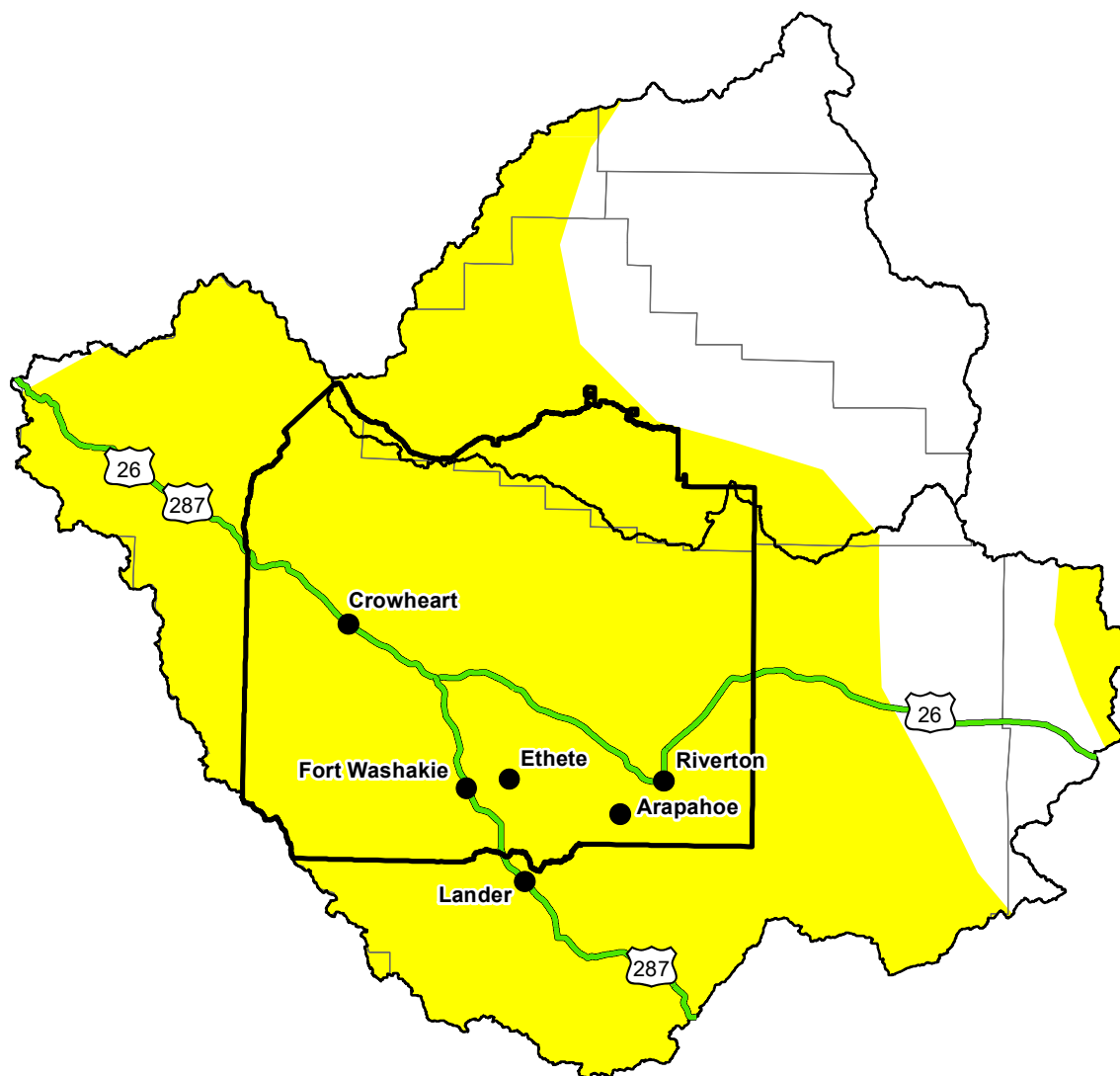
Intensity:

 None	 D2 Severe Drought
 D0 Abnormally Dry	 D3 Extreme Drought
 D1 Moderate Drought	 D4 Exceptional Drought

The Drought Monitor focuses on broad-scale conditions. Local conditions may vary. For more information on the Drought Monitor, go to <https://droughtmonitor.unl.edu/About.aspx>

Author:

David Miskus
NOAA/NWS/NCEP/CPC



<http://droughtmonitor.unl.edu/>