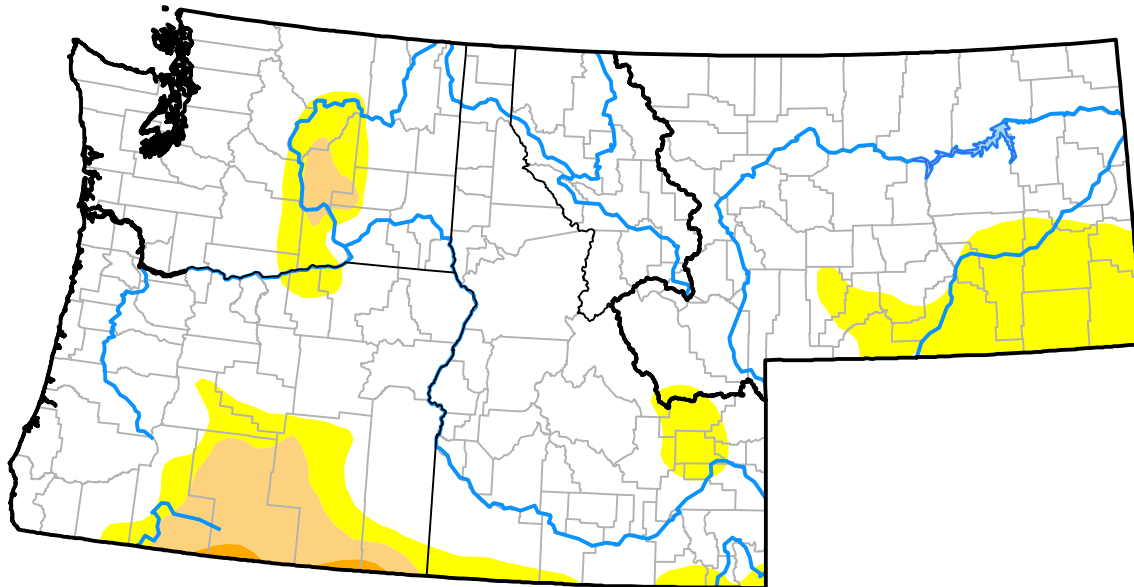


Northwest RDEWS and Surrounding Areas

(Released Thursday, Jun. 14, 2012)
 10:00 a.m. EDT

Drought Conditions (Percent Area)

	None	D0	D1	D2	D3	D4
Current	82.17	13.35	4.21	0.27	0.00	0.00
Last Week <i>06-07-2012</i>	78.54	16.58	4.62	0.27	0.00	0.00
3 Months Ago <i>03-15-2012</i>	57.54	29.48	12.46	0.52	0.00	0.00
Start of Calendar Year <i>01-05-2012</i>	65.18	29.41	5.41	0.00	0.00	0.00
Start of Water Year <i>09-29-2011</i>	79.21	20.79	0.00	0.00	0.00	0.00
One Year Ago <i>06-16-2011</i>	100.00	0.00	0.00	0.00	0.00	0.00



Intensity:

- None
- D0 Abnormally Dry
- D1 Moderate Drought
- D2 Severe Drought
- D3 Extreme Drought
- D4 Exceptional Drought

The Drought Monitor focuses on broad-scale conditions. Local conditions may vary. For more information on the Drought Monitor, go to <https://droughtmonitor.unl.edu/About.aspx>

Author:

David Miskus
 NOAA/NWS/NCEP/CPC

