

U.S. Drought Monitor

Wind River and Surrounding Area

June 26, 2012

(Released Thursday, Jun. 28, 2012)

Valid 8 a.m. EDT

Drought Conditions (Percent Area)

	None	D0	D1	D2	D3	D4
Current	0.00	0.00	0.00	0.00	0.00	0.00
Last Week <i>06-21-2012</i>	0.00	0.00	0.00	0.00	0.00	0.00
3 Months Ago <i>03-29-2012</i>	0.00	0.00	0.00	0.00	0.00	0.00
Start of Calendar Year <i>01-05-2012</i>	0.00	0.00	0.00	0.00	0.00	0.00
Start of Water Year <i>09-29-2011</i>	0.00	0.00	0.00	0.00	0.00	0.00
One Year Ago <i>06-30-2011</i>	0.00	0.00	0.00	0.00	0.00	0.00

Note: Statistics are for the surrounding area including the reservation.

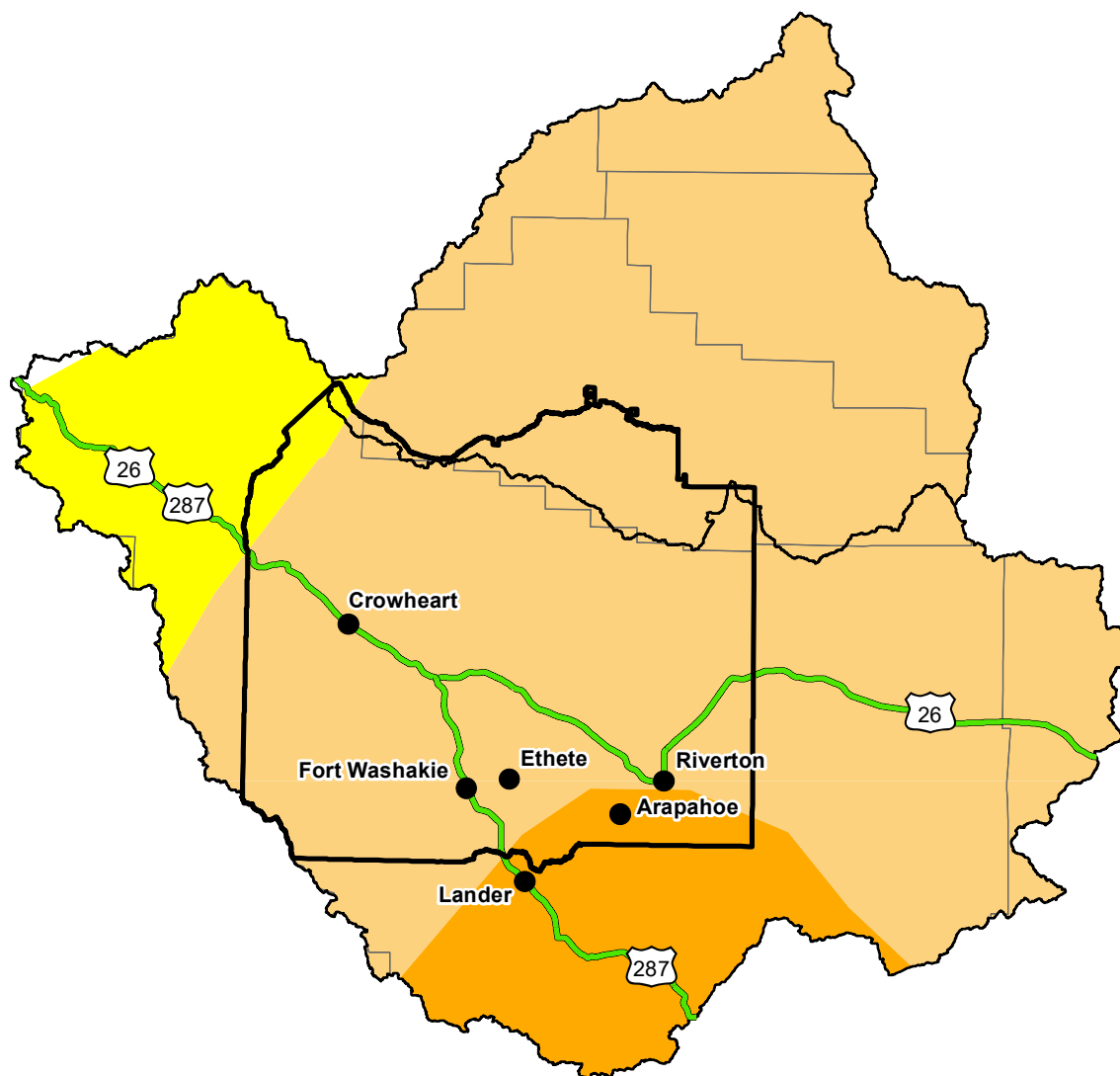
Intensity:

 None	 D2 Severe Drought
 D0 Abnormally Dry	 D3 Extreme Drought
 D1 Moderate Drought	 D4 Exceptional Drought

The Drought Monitor focuses on broad-scale conditions. Local conditions may vary. For more information on the Drought Monitor, go to <https://droughtmonitor.unl.edu/About.aspx>

Author:

Richard Heim
NCEI/NOAA



<http://droughtmonitor.unl.edu/>