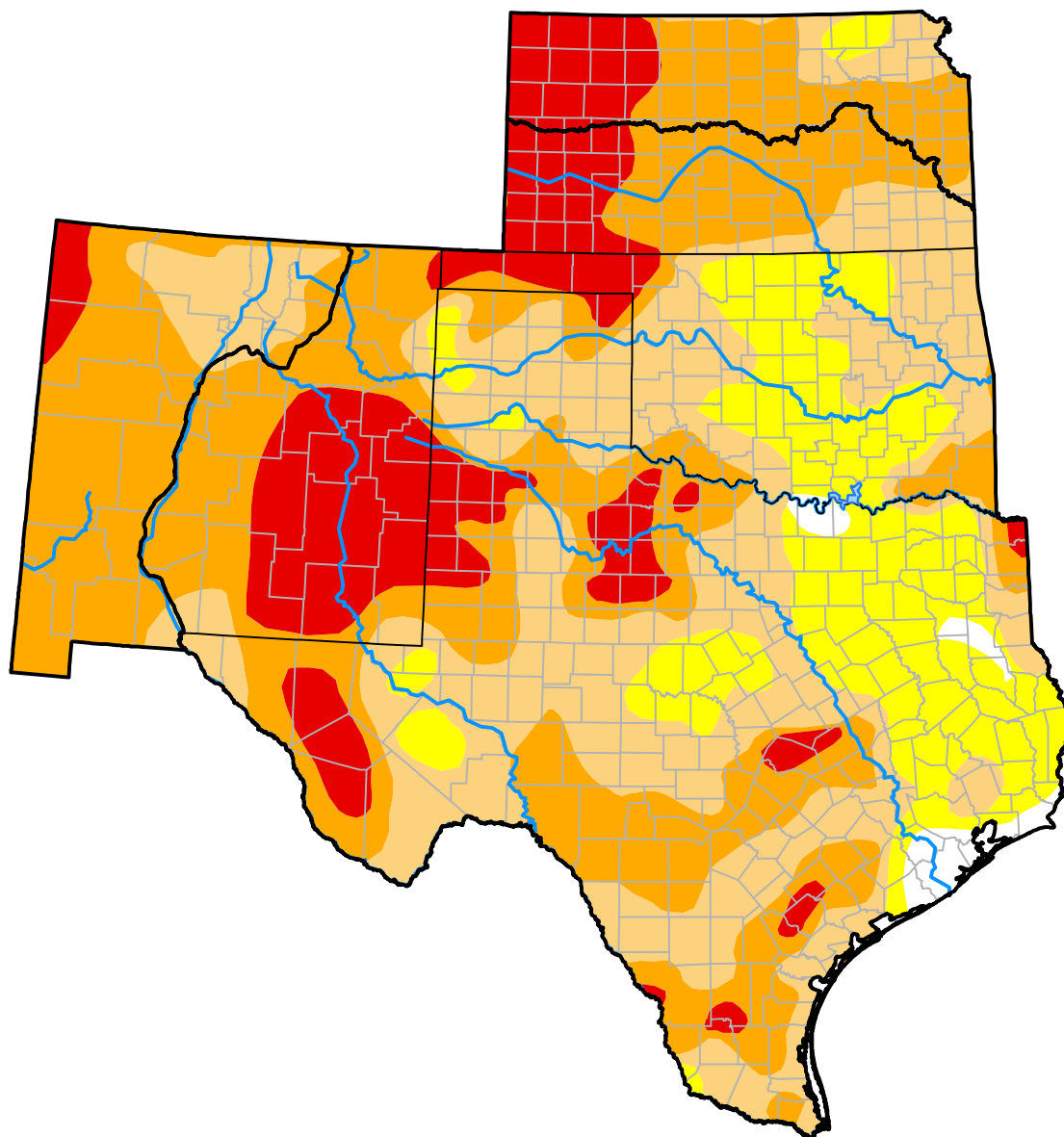


# U.S. Drought Monitor

## Southern Plains RDEWS

**July 3, 2012**  
(Released Thursday, Jul. 5, 2012)  
Valid 8 a.m. EDT



### Intensity:



*The Drought Monitor focuses on broad-scale conditions. Local conditions may vary. For more information on the Drought Monitor, go to <https://droughtmonitor.unl.edu/About.aspx>*

### Author:

Richard Tinker  
CPC/NOAA/NWS/NCEP



**droughtmonitor.unl.edu**